

Overview of Jing'an

静 安 概 览

2025

Information Office of
Jing'an District People's Government of
Shanghai China
上海市静安区人民政府新闻办公室 编

上海文化出版社
Shanghai Culture Publishing House



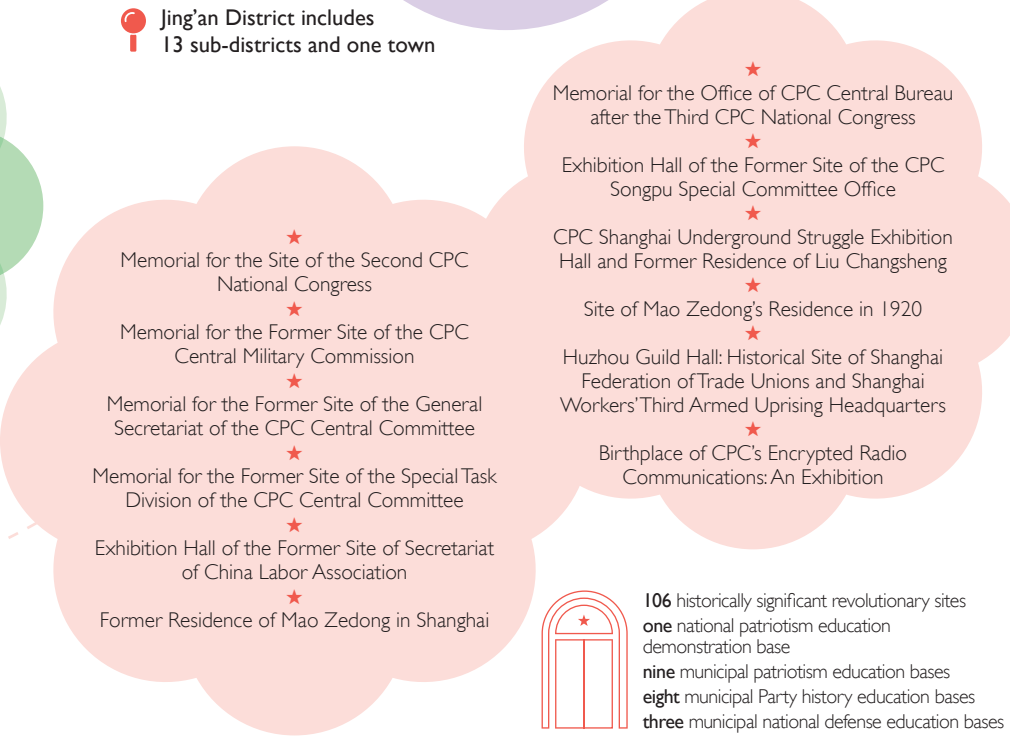
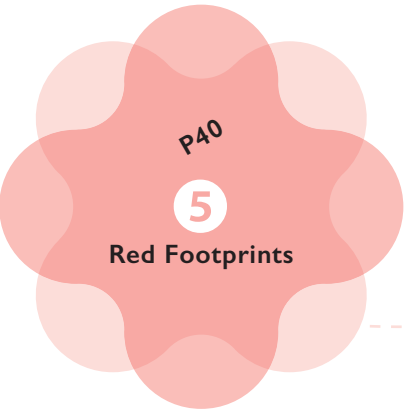
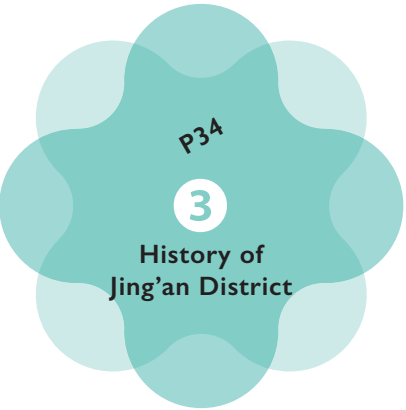
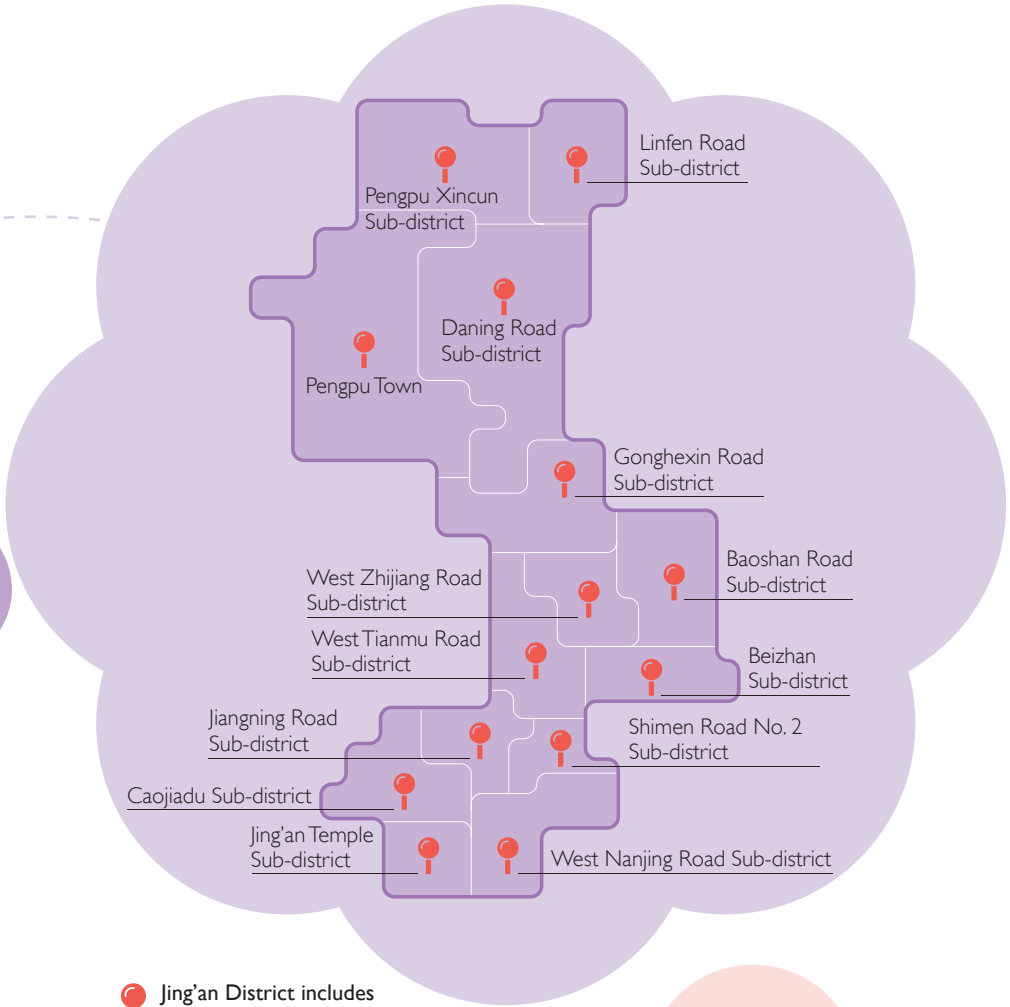
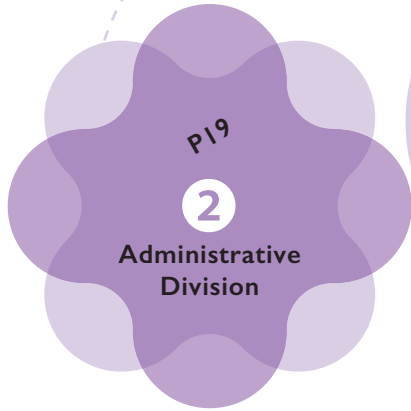
目
Contents
录

I	Profile of Jing'an District	4
	静安概貌	57
II	Economic Development	80
	经济发展	101
III	Social Programs	106
	社会事业	135
IV	Urban Development	148
	城市建设	171
V	Public Well-being	180
	民生保障	197



Profile of Jing'an District





Officially approved by the State Council in October 2015, the original Zhabei District and Jing'an District were merged to form today's new Jing'an District. With a total area of 37 km² and a permanent population of 929,300, Jing'an District administers 13 sub-districts, one town and 268 neighborhood (village) committees. Named after the Jing'an Temple, which boasts a history of over a millennium, Jing'an District is located in downtown Shanghai and borders six other districts. As a central district in downtown Shanghai, Jing'an has thriving trade and business, abundant resources, lively international exchanges, beautiful surroundings, well-developed social programs, and convenient access to amenities. It is the most cosmopolitan and stylish district in Shanghai and the epitome of the city.



I. A Review of the Achievement of Goals

Bearing in mind the long-term objectives through the year 2035, Jing'an District has accelerated its development in terms of global services, innovation and entrepreneurship, modern governance, a central district of an international cultural metropolis, and convenient amenities during the 14th Five-Year Plan period. Now in 2025, the district has achieved the goal of building "International Jing'an, An Excellent District" with a higher energy level, stronger core competitiveness, an expanded range of service providers, greater overall strength, more efficient governance, greater cultural attraction, and higher living standards. The district has basically transformed itself into an excellent, modern cosmopolitan district characterized by high-level services, high-quality development, efficient governance, sophisticated culture, higher quality of life, and a high level of participation.

—An expanded range of service providers. As the "Global Service Provider Program" has been fully implemented to attract and nurture high-level global service providers,

Jing'an District has seen the emergence of a comprehensive and diverse cluster of professional services, including consulting, legal services, accounting, human resources, inspection, and testing services, etc. Its economy is further integrated with the global network of services. As more and more global service providers locate in Jing'an of Shanghai to serve the whole China and the rest of the world, Jing'an has made new ground in opening up on all fronts with its unique characteristics. With significant improvement in its core competitiveness, investment attractiveness, regional influence, and functional capacity, Jing'an District has become a key contributor in Shanghai's efforts to maintain sound domestic circulation and link it up with international circulation.

—Greater overall strength. Jing'an District ranks among the top downtown districts in revenue from the general public budget, at an annual growth rate of 3%-5%. The GDP of Jing'an has been growing in step with that of the whole city. The innovation system is increasingly improved. New breakthroughs have been made in the improvement and upgrading of industrial structure, and significant progress has



been made in upgrading the industrial base and modernizing industrial chains, with expanding new industries, new forms of business and new models that are in line with Shanghai's development goal of "five centers" (i.e., an international economic center, financial center, trade center, shipping center, and sci-tech innovation center) and "four functions" (i.e., global resource allocation, sci-tech innovation, high-end industry leadership, and a hub for opening up) and the District's positioning. The framework of digital Jing'an has taken shape. The clusters of emerging industries such as world-class big data and life science & healthcare have achieved economies of scale. A high-end modern service industry is emerging, featuring high-quality, efficiency, vibrancy and greater sustainability.



—**More efficient governance.** The efficient operation of online government services and governance platforms has enabled a more scientific, meticulous and intelligent approach to governance. The district has made new progress in urban renewal and spatial planning. The ecological environment in Jing'an continues to improve, with reductions in energy consumption and CO₂ emissions per unit of added value meeting municipal targets. With its picturesque appearance, Jing'an ranks among the top districts in public satisfaction. Safety and resilience within the district have been significantly improved. Jing'an is a pioneer in strengthening and innovating social governance, further stimulating the vitality of primary-level organizations and communities. A governance pattern based on collaboration, participation and common interests has taken shape, making Jing'an one of the best-organized, safest and cleanest districts in Shanghai.

—**Greater cultural attraction.** With the better development and preservation of red culture, Haipai culture, and Jiangnan culture, the improvement of the public cultural service system and the distribution of cultural and sports facilities, the growth of cultural and creative industries, and an increasing variety of international multicultural cooperation, the unique cultural brands of Jing'an District have become better recognized. The cultural and ethical level of residents and the overall civility of the district have improved. The district's cultural soft power and global influence have also grown.



—**Higher living standards.** The social security system has been further improved. Digitalized, diverse, high-quality, and personalized public services have been expanded and are more accessible. Elderly care services have become more adequate, balanced and diverse. The district has completed the renovation of all below Grade II buildings in old neighborhoods. Efforts have been made to promote the comprehensive and individualized development of students. The average life expectancy in Jing'an is higher than the citywide average. All these achievements have enhanced the district's attractiveness and warmth, making it a high-quality urban area in Shanghai that is admired by all.

2. Administrative Division

(I) Administrative Structure

The jurisdiction of the Jing'an District People's Government includes 13 sub-districts and one town, namely Jing'an Temple Sub-district, Caojiadu Sub-district, Jiangning Road Sub-district, Shimen Road No. 2 Sub-district, West Nanjing Road Sub-district, West Tianmu Road Sub-district, Beizhan Sub-district, Baoshan Road Sub-district, West Zhijiang Road Sub-district, Gonghexin Road Sub-district, Daning Road Sub-district, Pengpu Xincun Sub-district, Linfen Road Sub-district, and Pengpu Town. There are 268 committees, including 267 residents committees and one villagers committee.





2. About the Sub-districts

(1) Jing'an Temple Sub-district

The Sub-district is located in the southwest of Jing'an District, between Fumin Road and Changde Road in the east, Zhenning Road in the west, Changle Road in the south, and Wanhangdu Road and Xinzha Road in the north. It covers a total area of 1.57 km² and oversees 11 residents committees. The Sub-district is famous for its numerous skyscrapers, well-connected road network and a wealth of cultural attractions.

In recent years, the Sub-district has adhered to the people-centered approach to urban development. The Party building efforts have been improved to explore Party-building-guided governance at the community level by promoting Party building efforts in Party and state offices, buildings, grids, regions and industries and intelligent Party building. The Sub-district strives for unity in Party building, democratic consultation, coordinated development efforts, cooperation in governance, resource sharing, and cultural harmony. The Sub-district has also implemented the principle of whole-process people's democracy in social governance and made active efforts to modernize urban governance. Rules of procedure have been developed to guide the residential communities in such implementation in community-level governance, with emphasis on sound direction, good topics, effective consultation, model citizens, and positive social norms. Following the established procedure, proposals and suggestions from Party branches and members are subject to democratic consultation and decided on a categorized basis before concerted efforts are made to implement them. Through

continuous efforts to improve and upgrade approaches to Party building at the community level, the Sub-district aims to achieve optimal governance at the community level and establish itself as a model district in Chinese modernization.

The Sub-district is the pioneer of building-based Party building initiatives in Shanghai and ranks first in Shanghai for 30 consecutive times in public satisfaction survey about the city appearance. It has won many honors such as National Civilized Unit, National Outstanding Community for Volunteers' Services, National Model Sub-district in Community Education, National Culturally Advanced Community, Municipal Model Grassroots Party Organization, and Model Civil Servants' Collective of Shanghai Municipality.

(2) Caojiadu Sub-district

Caojiadu Sub-district is situated in the southwest of Jing'an District. It covers a total area of 1.49 km² between Jiaozhou Road in the east, Changning Road and Jiangsu Road in the west, West Wuding Road and Xinzha Road in the south, and Changshou Road and Anyuan Road in the north, bordering Putuo District and Changning District. Consisting of 14 residents committees, the Sub-district is known as "small Shanghai in the southwest of the city."

In recent years, the Sub-district has embraced the people-centered approach to urban development, guided by the "One Axis, Five Circles, and Three Models" blueprint. This plan centers on South Wuning Road as the development axis. It includes five dedicated circles focusing on livability, business, shopping, education, and elderly care, and three modal areas, namely the Yanwujiao innovation block, the cultural heritage



zone on Wanhangdu Road, and the area on Changping Road that integrates healthcare, sports, wellness and food services.

The Sub-district has received various honors at both national and municipal levels. National accolades include the National Model Sub-district in Community Education, National All-people Reading Advanced Unit, National Mass Sports Advanced Unit, National Demonstration Community in Learning-oriented Family Construction, National Model Office in Practicing Economy, National Model Chamber of Industry and Commerce, and National Pilot Area for 15-minute Life Circle. At the municipal level, the Sub-district has been recognized as Municipal Civilized Community, Shanghai Community of Learning, Shanghai Demonstration Sub-district in Food Safety, and Municipal Demonstration Community in Safety.

(3) Jiangning Road Sub-district

Jiangning Road Sub-district is located in the south of Jing'an District and covers an area of 1.84 km² between Taixing Road and West Suzhou Road in the east, Jiaozhou Road and Changde Road in the west, Xinzha Road and West Beijing Road in the south, and Anyuan Road in the north. It is home to the Jing'an District People's Government and consists of 16 residents committees.

In recent years, the Sub-district has actively followed the guideline of serving the people wholeheartedly. Focusing on the creation of the 15-minute life circle, which comprises a corridor (Changping Road Community Main Corridor), a river (Suzhou River Urban Waterfront), and two areas (North Shaanxi Road Historical and Cultural Area and Changde Road Innovation Area), the Sub-district is developing its Party-building-guided governance at the community level and creating a beautiful community featuring good governance.

Jiangning Road Sub-district has received numerous honors at the national and municipal levels, including the National Demonstration Community in Comprehensive Disaster Reduction, National Model Sub-district in Community Education, National Model Community in Full Employment, Municipal Civilized Community, Shanghai Advanced Grassroots Party Organization, Shanghai Demonstration Community in Food Safety, Municipal Demonstration Community in Safety, and Municipal Model Sub-district in Urban Household Waste Sorting. In addition, in 2016, the Sub-district was designated

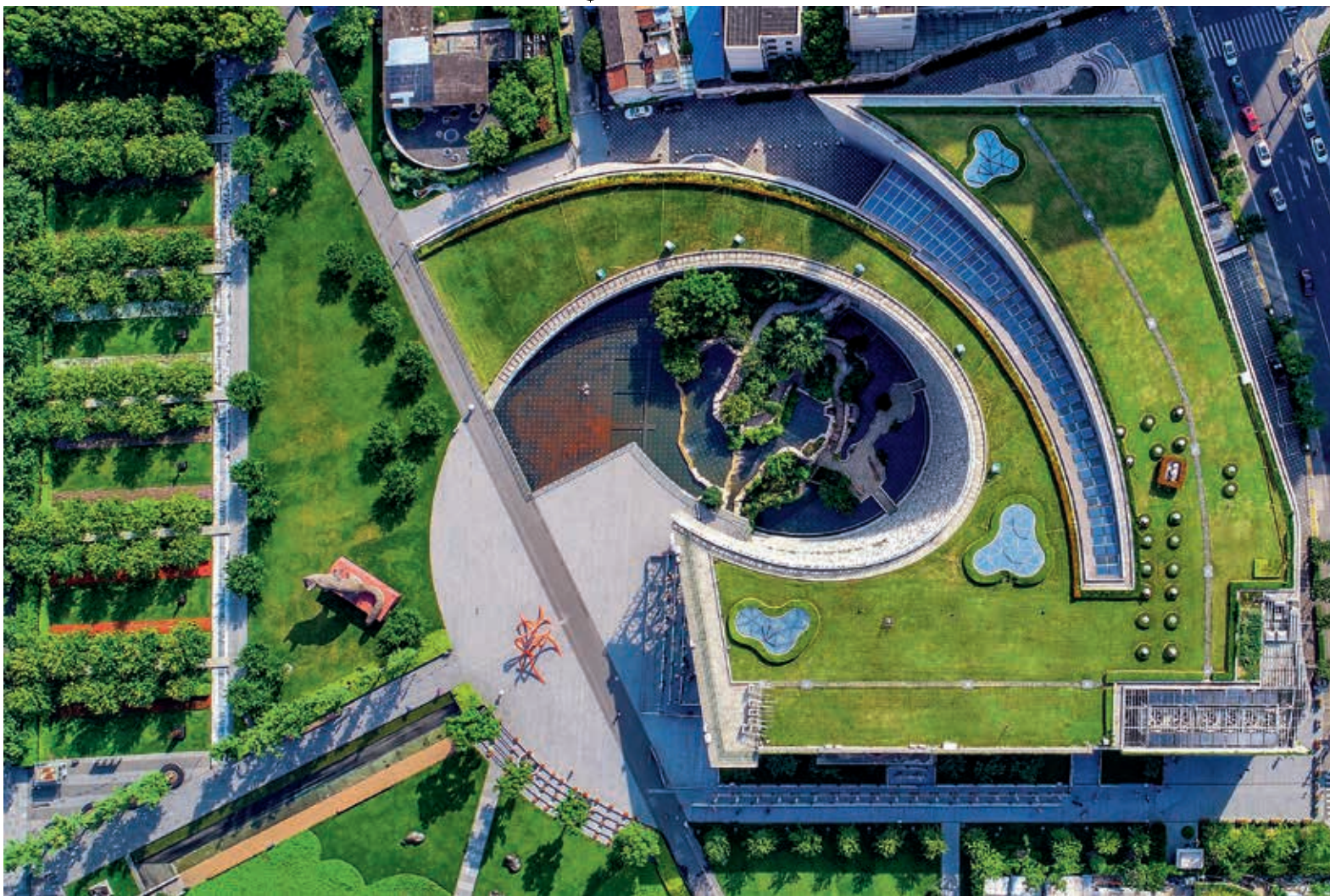


Grassroots Legislation Contact Site by the Standing Committee of the Shanghai Municipal People's Congress. In 2022, the city's first standardized, embedded community nursery was established in the Sub-district.

(4) Shimen Road No. 2 Sub-district

Shimen Road No. 2 Sub-district stretches from North Chengdu Road in the east to Jiangning Road, Wuding Road and Taixing Road in the west, and from West Nanjing Road in the south to South Suzhou Road in the north. Benefiting from the 100 billion-yuan commercial hub along West Nanjing Road and the world-class waterfront commercial area in the Suhe Bay region, the Sub-district is characterized by integrated urban and industrial development, making it an ideal choice for residents and enterprises. Covering an area of 1.07 km², the Sub-district consists of 11 residents committees.

In recent years, the Sub-district has strengthened its support and assistance system and optimized public space planning to create a welcoming community. It has strengthened the accountability system for workplace safety and ensured public safety to foster a safe community. It has promoted its revolutionary culture brands and provided high-quality public cultural goods to develop a community with a rich cultural tapestry. It has improved the governance system based on collaboration, participation, and shared benefits to lead and serve the people and build a vibrant community. Continuous efforts have been made to foster a community of urban



governance and improve the environmental quality of the neighborhood.

The Sub-district has won many municipal and state-level honors, including National Model Collective in Promoting Ethnic Unity and Progress, National Demonstration Community of Ideological Culture Promotion, National Pilot Demonstration Sub-district of Smart Health and Elderly Care, National Advanced Service Center for the Handicapped, National Four-100 Best Volunteer Service Community, Model Office in Practicing Economy awarded by National Government Offices Administration, Municipal Civilized Community, Shanghai Safe Community, Shanghai Model Collective in Promoting Ethnic Unity and Progress, Municipal Model Sub-district in Urban Household Waste Sorting, and Shanghai Model Community in Ensuring Full Employment (the fifth group).

(5) West Nanjing Road Sub-district

West Nanjing Road Sub-district was established in 1994 by merging the former Weihai Road Sub-district and Middle Yan'an Road Sub-district. It covers an area of 1.62 km² and consists of 12 residents committees. The Sub-district is guided by the vision of enhancing the welfare of the people while developing a vibrant urban core area.

The characteristics of the Sub-district are encapsulated in three terms: "Golden Key," "Two Population Groups," and "Three Brands." The "Golden Key" refers to the Sub-district's resemblance to a golden key on the map. Located at the southernmost part of Jing'an District, West Nanjing Road Sub-district borders East Nanjing Road Sub-district and Ruijin Road No. 2 Sub-district of Huangpu District and Hunan Road Sub-district of Xuhui District. Yan'an Elevated Road, one of the city's arterial roads, runs through the Sub-district. Metro



lines 2, 7, 12, and 13 all have stations within the Sub-district. The “Two Population Groups” refer to white-collar workers and elderly residents, who are the primary focus of the Sub-district’s services. Residents above the age of 60 make up 47% of the Sub-district’s total population, and over 110,000 white-collar commuters work in the Sub-district’s 48 office buildings. “Three Brands” refer to the brands of “Nancy,” (a near-homophone of West Nanjing in Chinese) “Golden Key,” and “*Fumin*” (meaning benefiting the people), which have been established in the Sub-district’s cultural work, engagement with the people, and community-level governance guided by Party building.

In recent years, the Sub-district has received numerous national and municipal honors, including National Civilized Unit, National Model Collective in Recreational Sports, Model Office in Practicing Economy awarded by National Government Offices Administration, Municipal Demonstration Community

in Safety, Shanghai Municipality May Fourth Model League Committee, Municipal Model Sub-district of Patriotism and Supporting the Military, Shanghai Demonstration Children-friendly Community, and Shanghai May 1st Labor Award.

(6) West Tianmu Road Sub-district

The Sub-district is located in the center of Jing’an District, with Shanghai Railway Station within its boundaries. The Sub-district covers an area of 1.94 km² between North-south Elevated Road in the east, the Suzhou River in the south and the west, and North Zhongshan Road in the north. It consists of 12 residents committees.

The Sub-district has four key characteristics. 1) It is the key area for Jing’an District’s “One Axis, Three Belts” strategy. Located in the Suhe Bay waterfront commercial area, the Sub-district is a main arena for high-quality development. It is home to about 5,000 enterprises, 64 commercial and office buildings, and China’s first state-level human resource service industrial park, China Shanghai Human Resource Service Industrial Zone. 2) The Sub-district is a transportation hub. It is home to Shanghai Railway Station, Shanghai Long-Distance Bus Station, five metro lines, and nearly 40 bus routes. 3) The Sub-district



is a model for urban renewal. It has made steady progress in urban development with the construction of projects such as the 15-minute life circle, Financial Street Center, and Lai Fung Skyline Tower, and significant progress in the Fangualong housing renovation project. 4) The Sub-district is a ground for community governance. The Sub-district, which is divided into northern and southern sections by the railway, has guided grid-based good governance with Party building for meticulous and modern community-level governance.

Over the years, the Sub-district has received numerous national and municipal honors, including National Model Grassroots Party Organization, National Pilot Demonstration Sub-district of Smart Health and Elderly Care, and Shanghai Municipal Model Grassroots Party Organization. The Sub-district ranked first in the city's standardization competition of community affairs service centers.

(7) Beizhan Sub-district

The Sub-district is located in the core area of the Suhe Bay region and covers an area of 1.74 km² between North Henan Road and Luofu Road in the east, North-south Elevated Road in the west, the Suzhou River in the south, and the Beijing-Shanghai Railway in the north. It consists of 14 residents committees.

The Sub-district boasts a favorable location, well-connected multidimensional transport networks, and a rich historical and cultural heritage. In recent years, the Sub-district has strived to develop into a waterfront demonstration zone with meticulous management and a waterfront art corridor. It has endeavored



to create a Party building community in the waterfront commercial area, improve the business environment, and promote the integrated development of areas such as culture, tourism, commerce, sports and exhibitions. Leveraging key commercial hubs such as Suhe Center, Suhewan MIXC World, and Shanghai Joy City, the Sub-district has fostered the growth of the anime, comics and games (ACG) economy while driving the development of buildings and industrial parks. With these initiatives, the Sub-district is accelerating its transformation into the core area of the Suhe Bay commercial area, a world-class waterfront commercial zone.

Over the years, the Sub-district has received honors such as Municipal Civilized Community, National Model Chamber of Industry and Commerce, Municipal Model Chamber of Industry and Commerce, Municipal Model Sub-district in City Appearance Management, and Municipal Children-Friendly Community.

(8) Baoshan Road Sub-district

The Sub-district is located in the center of Jing'an District and covers an area of 1.62 km² between East Baoxing Road in the east, North Tibet Road in the west, Metro Lines 3 and 4 in the south, and North Zhongshan Road in the north. It consists of 18 residents committees. The Sub-district is conveniently located and well connected to the transport networks, with three metro stations. It has abundant educational and medical resources, including 13 schools, such as Shibe Senior High School, and three hospitals, such as Shanghai Municipal Hospital of Traditional Chinese Medicine.

The Sub-district is a residential area within Shanghai's Inner Ring Road which is now in rapid transmission. Several residential development projects are under way and the landscape of the Sub-district is undergoing dynamic changes. Baoshan Road Sub-district has long been hailed as the Red Baoshan Road, with 26 revolutionary sites, including the former sites of Shanghai Federation of Trade Unions (at No. 2 Baoshan Lane), the Huzhou Guild Hall, and the Commercial Press. The Sub-district has developed two themed red tourism routes—one for walking and the other for bus tours, linking its revolutionary sites into an integrated network and continuously highlighting its revolutionary heritage. The Sub-district is gradually developing into a new type of community characterized by high standards, harmony, and livability.

The Sub-district has received many national and municipal honors, including National Demonstration Community in Disaster Reduction, National Science Popularization Day Outstanding Activity Award, Shanghai Safe Community, Municipal Model Sub-district in No Illegal Construction, and Municipal Model Sub-district in Urban Household Waste Sorting. Its community affairs service center has been rated 5A for several years and its city operation & general management center has won the citywide competition for the public service hotline system.

(9) West Zhijiang Road Sub-district

The Sub-district is located in the central-southern part of Jing'an District, covering a total area of 1.64 km² between North Tibet Road in the east, Jiaotong Road in the south, Datong Road and Pushan Road in the west, and North Zhongshan Road in the north. It consists of 18 residents committees.

With a view to making the Sub-district more distinctive and people-oriented, the Sub-district has developed new ways of providing door-to-door government services and has expanded the scope of such services. Continuous efforts have been made to advance the development of the 15-minute life circle. Iconic commercial properties represented by May Flower Life Plaza and public service facilities represented by community service centers have formed life circles characterized by diverse businesses, comprehensive functions, high-quality service, and harmonious integration of commercial and residential spaces. Focusing on two major creative parks, Yongxinghui and Peacock, the Sub-district is actively improving enterprise services and addressing the challenges faced by enterprises.



In recent years, the Sub-district has won honors such as National Model Unit of Service for Returned Overseas Chinese, National Model Sub-district of Open and Democratic Management of Factory Affairs, Shanghai Safe Community, Municipal Model Sub-district in Urban Household Waste Sorting, Municipal Model Sub-district in No Illegal Construction, Shanghai May 1st Labor Award, and Shanghai Outstanding Community of Learning.

(10) Gonghexin Road Sub-district

The Sub-district is located in central Jing'an District, with its boundaries defined by North Zhongshan Road to the south, West Baoxing Road to the east, bordering Hongkou District, Hutai Road to the west, bordering Putuo District, and Yanchang Road and Laohutai Road to the north. Covering a total area of 2.72 km², it consists of 27 residents committees.

Guided by the objective of good governance in Party building, the Sub-district is developing an integrated governance system based on grids and four functional blocks dedicated to business, education, residence and elderly care. Efforts have been made to improve resident's living conditions through the renovation of old areas and houses. By developing 15-minute life circles, senior life circles, and public cultural services, the Sub-district is committed to providing all-round, round-the-clock public services for residents of all ages. In addition to its distinctive Party building efforts, the Sub-district is also known for its traditional culture. It actively promotes tea culture and the tea industry by preserving traditional culture and spreading tea knowledge.

In recent years, the Sub-district has received many honors, such as National Demonstration Sub-district in Smart Health and Elderly Care, National Demonstration Community in Comprehensive Disaster Reduction, National Model Office in Practicing Economy, Municipal Children-Friendly Community, Municipal Civilized Community, Municipal Demonstration Community in Safety, Municipal Model Sub-district of Patriotism and Supporting the Military, and Municipal Excellent Volunteer Collective in Food Safety. It is also home to the first batch of myopia prevention and control centers in Shanghai.

(11) Daning Road Sub-district

The Sub-district is situated in the central-northern part of Jing'an District, covering an area of 6.24 km². Its boundaries



extend from North Baoxing Road and Yuexiu Road in the east to Pushan Road and Wanrong Road in the west, and from Yanchang Road and Laohutai Road in the south to Zoumatang River and the northern suburban railway in the north. The Sub-district oversees 25 residents committees.

The Sub-district is committed to building a people-centered and vibrant community. Guiding grid-based governance with Party building, it has established a “1+3+7+N” grid system to promote good governance. Efforts have been made to develop the Ning’s Study, improve the business environment, and improve assisted catering and care services for the elderly. In community-level governance, the Sub-district has strengthened the “comprehensive doorstep responsibility system,” promoted digital empowerment, strengthened the “Daning Road Sub-district Safety Alliance” and encouraged public participation in tree planting. Based on its regional Party-building platforms, the Sub-district has integrated resources to advance the development of the 15-minute life circle. These include Daning International Plaza, Jiuguang Department Store Daning Branch, Sincere Plaza, Shanghai Circus World, China Maritime Museum, Jing’an Sports Center, Shanghai University, Shanghai Tenth People’s Hospital, and the Affiliated Stomatology Hospital of Tongji University.

As a result of its high-quality urban development efforts, the Sub-district has been recognized as National Demonstration Sub-district in Smart Health and Elderly Care, National Top Community in Volunteers’ Services, National Model Primary-Level Organization in Service for Returned Overseas Chinese, Employer with Childcare Services, and Advanced Unit for Veterans’ Service and Support.

(12) Pengpu Xincun Sub-district

Founded in the 1950s, Pengpu Xincun is one of Shanghai’s earliest worker communities. Located in the northwest of Jing’an District, the Sub-district is bounded by Lingnan Road to the east, Dongjiaojing River to the west, Changzhong Road and Zoumatang River to the south, and Gongkang Road and the high-voltage transmission line corridor to the north. It borders Baoshan District to the north and west. The Sub-district covers an area of 3.81 km² and consists of 33 residents committees.

Through relentless hard work and dedication, the Sub-district is striving to establish itself as a highlight in the northern part of Jing’an District. It is the first in Shanghai to complete the renovation of old, non-self-contained residential housing, benefiting 4,907 households in 20 years. The innovative “Pengpu Model” for such renovation has provided a new solution for urban renewal and development both citywide and nationwide. The Sub-district has improved the new system of community-based elderly care and created the 15-minute life circle to improve the efficiency of public services. It has further integrated the grids for governance and strengthened digital empowerment to enhance the effectiveness of grid-based governance.

In recent years, the Sub-district has won more than 30 national and municipal honors, such as National Model Collective in Promoting Ethnic Unity and Progress, Sub-district with No Illegal Construction (first batch in Shanghai), Outstanding Unit in Municipal Urban Management Competition, and Municipal Model Sub-district of Patriotism and Supporting the Military (for nine years).

(13) Linfen Road Sub-district

Founded in 1988, Linfen Road Sub-district is situated at the junction of Jing’an, Hongkou and Baoshan districts. It covers an area of 2.12 km² and consists of 20 residents committees.

Over the past three decades, the Sub-district has remained true to its original aspiration and founding mission and has forged ahead with perseverance. It is the epitome of the CPC’s efforts to lead the people in creating a better life by relying on, mobilizing, organizing, and serving the people in urban communities since the beginning of reform and opening-up. The Sub-district has prioritized initiatives such as Party building grids, digital transformation, elderly care, and complete community projects, significantly advancing meticulous management of super large urban communities. It has become

a site for exchanges hosted by the International Department of the CPC Central Committee, welcomed foreign media, and served as a field teaching location for Fudan University, China Executive Leadership Academy Pudong, and the Party School of the CPC Shanghai Municipal Committee.

The Sub-district has won nearly 50 national honors, including National Advanced Grassroots Party Organization, National Ideological and Political Work Advanced Model, and National Model Collective of Civil Servants.

(14) Pengpu Town

Pengpu Town covers an area of 7.88 km² between Gonghexin Road in the east, Hutai Road in the west, Laohutai Road in the south, and Changzhong Road in the north. It consists of 36 residents committees and a villagers committee.

Situated along Shanghai's Middle Ring Road, Pengpu Town is a key innovation and creativity area in Jing'an District's "One Axis, Three Belts" strategy. The town is home to 33 office buildings and industrial parks, with more than 700,000 m² of self-owned facilities. Ten of these buildings generate 100 million yuan in annual tax revenue. Focusing on six signature industries of Jing'an District, Pengpu Town has gradually established a diversified industrial development framework characterized by leading enterprises, interactive industrial chains and clusters, ecosystem development, and business aggregation.

Pengpu Town has achieved four notable "firsts", including one of the first towns in China to reach a GDP of RMB100 million, the first town in Shanghai to implement the scheduled farmer retirement system, the first town completing the transition of rural residents to urban residents, and one of the first Towns of Chinese Folk Art. It has been named as "Town of Chinese Folk Culture and Art (Photography)" for six consecutive years. The Sub-district has won many honors, such as National Demonstration Community in Comprehensive Disaster Reduction, National Sanitation City, Municipal Civilized Community, Municipal Demonstration Community in Safety, Shanghai Outstanding Community of Learning, and Municipal Model Town of Patriotism and Supporting the Military.

3. History of Jing'an District

Jing'an District is named after the ancient Jing'an Temple. The area to the north of Wusong River (old course) was



administered by Kunshan County before the 10th year of the reign of Emperor Jiading in the Southern Song Dynasty (1217), and later successively administered by Jiading County and Baoshan County. The area to the south of Wusong River (old course) was administered by Huating County from the 1st year to the 28th year (1291) of the Yuan Dynasty, and later administered by Shanghai County in the Ming and Qing dynasties. Qiujiang River was the boundary of Shanghai County and Baoshan County, but it was filled to build roads in the Republic of China. In the 2nd year of the reign of Emperor Tongzhi (1863), the central and southern areas were established as American concession, but were later annexed into the Shanghai International Settlement. In the 25th year of the reign of Emperor Guangxu (1899), most of its territory was annexed as the western part of Shanghai International Settlement. To hinder concession expansion, merchants in Zhabei built



Zhabei Engineering Bureau and established commercial port in the 26th year of the reign of Emperor Guangxu in the Qing Dynasty (1900). In 1914, the area on the south of Changbang Road (Middle Yan'an Road) and Xujiahui Road (Huashan Road) was annexed in French concession. Thus, the southern part was divided into French concession and Shanghai International Settlement, and the northern part was administered by Chinese government. In July 1927, Shanghai Special Municipal Government took over 17 cities and towns, and all the cities and towns were called districts in July 1928, and Zhabei City was renamed as Zhabei District. In the 1930s, Japanese invaders waged two battles against Shanghai, which nearly destroyed Zhabei District, and reduced it to the well-known shanty area. After Shanghai was occupied in 1937, Japanese puppet regime changed Zhabei District into Zhabei Government Department, and Hubei District Government Office. Shanghai International Settlement became the "lonely island" before the start of the Pacific War. After the victory of the War of Resistance Against Japanese Aggression in 1945, the district was governed by No. 10 District, No. 11 District, No. 12 District, No. 14 District, No. 15 District and part of No. 22 District and No. 24 District.

In 1947, No. 14 District and No. 15 District were renamed as Zhabei District and Beizhan District respectively. On May 30, 1949, the Municipal Military Control Commission took over Jing'an District, and once changed it into Jing'an Temple District. On June 28, 1950, it was changed into the original name Jing'an District. And then before 1956, the territory was governed by Jing'an, Xincheng, Jiangning, Zhabei and Beizhan districts successively. During the administrative re-division of Shanghai in 1956, Jing'an District was canceled. Divided by Fumin Road and Changde Road, the eastern part was incorporated into Xincheng District, and the western part was merged into Changning District, and Zhabei District and Beizhan District were merged into Zhabei District. During the administrative re-division in January 1960, Xincheng District and Jiangning District were canceled, and the area to the west of North Chengdu Road, the whole Jiangning District and the area to the east of Zhenning Road in Changning District were emerged into Jing'an District. In November 2015, the CPC Shanghai Committee and the Shanghai Municipal People's Government announced the "Approval of the State Council on Agreeing the Adjustment of Administrative Division of Shanghai," i.e. the original Zhabei District and Jing'an District were merged to form the new Jing'an District. In March 2016, the merger of the original Jing'an District and Zhabei District was completed, and the current Jing'an District was officially established.





4. Cultural-Ethical Progress

Following the guidance of the Xi Jinping Thought on Socialism with Chinese Characteristics for a New Era and the Xi Jinping Thought on Culture and the guiding principles of the Third Plenary Session of the 20th CPC Central Committee, Jing'an District is committed to promoting both material and cultural-ethical progress and helping create a model area for the best practice of the Xi Jinping Thought on Culture. Through active participation in the National Civilized Urban Area program and subsequent review, Jing'an District promotes and practices the core socialist values and fosters high-quality cultural-ethical progress. The district has been honored with the title of





National Civilized Urban Area for five consecutive times.

In 2025, Jing'an District will focus its efforts on cultural-ethical progress around the completion of tasks outlined in the 14th Five-Year Plan. With the goal of "Beauty and Civility in Jing'an," the district will actively support key areas such as culture, tourism, commerce, sports, and exhibitions, while coordinating efforts to raise awareness, implement principles, and develop initiatives to promote cultural-ethical progress. Continuous efforts will be made to enhance the district's quality, ensure and improve the people's wellbeing, and continue to enhance public civility. These endeavors will provide a strong inner driving force for developing Jing'an District into an excellent, modern, cosmopolitan area.

5. Red Footprints

Jing'an played a central role in the CPC's early activities. It was a hub for the spread of Marxism, the birthplace of the Party's first constitution, and the gathering site of the CPC Central Committee's early offices, where China's revolutionary leaders left their footprints, proposed the Party's united front policy, and launched numerous mass movements. As a key battleground of China's revolution, Jing'an witnessed many significant early activities of the Party. Early Party leaders such as Mao Zedong, Zhou Enlai, Deng Xiaoping, and Chen Yun, as well as revolutionary martyrs, worked, lived and fought in Jing'an, leaving an invaluable revolutionary legacy. Jing'an District boasts a rich and distinctive collection of revolutionary resources, with 106 historically significant revolutionary sites, ranking at the top of the city in terms of number. These sites are witnesses to the revolutionary history of Jing'an, embodiments



of its revolutionary spirit, and preservers of its revolutionary traditions.

In recent years, Jing'an District has implemented initiatives to preserve and promote revolutionary culture centered on the theme "Birthplace of the Party". Giving full play to its rich revolutionary resources, the district has integrated the functions of venues for patriotism, Party history and national defense education. A number of key revolutionary sites have been opened to the public. It has also developed one national patriotism education demonstration base, nine municipal patriotism education bases, eight municipal Party history education bases, and three municipal national defense education bases.

Memorial for the Site of the Second CPC National Congress

The Memorial for the Site of the Second CPC National Congress is located at No. 30 Lane 7, North Laochengdu Road, Jing'an District (formerly No. 625 Fude Lane, South Chengdu Road, Shanghai) in a Shikumen-style terraced building that was built in 1915 and completed in 1916. The memorial itself consists of two rows of two-story brick-and-wood buildings facing south, typical of Shanghai's Shikumen architecture. It once served as the residence of Li Da, the propaganda chief of the Party's Central Bureau, and as the site of the Party's first underground publishing house, the People's Publishing House. The Second CPC National Congress was held here from July 16 to 23, 1922, attended by members of the Central Bureau, representatives of local Party organizations, and participants returning from the First Congress of Communist and Revolutionary Organizations



of the Far East. The delegates included Chen Duxiu, Zhang Guotao, Li Da, Yang Mingzhai, Luo Zhanglong, Wang Jinmei, Xu Baihao, Cai Hesen, Tan Pingshan, Li Zhenying, and Shi Cuntong.

The memorial was completed and opened to the public in 2002 and was named a national demonstration base for patriotism education by the Publicity Department of the CPC Central Committee in 2009. In 2013, it was included in the seventh batch of major historical and cultural heritage sites protected at the national level by the State Council. In 2021, the memorial was recognized as a national AAAAA tourist attraction by the Ministry of Culture and Tourism along with the memorials of the First and Fourth CPC National Congresses. In 2024, it was recognized as a second-tier museum. The memorial consists of six sections, including “Preface,” “Basic Exhibition,” “History of the Party Constitution,” “Themed Exhibition,” “Former Site of the Second CPC National Congress” and “Former Site of Girls’ School.” It presents visitors with a memorial in Shikumen that embodies both local

characteristics and cultural significance, authentically recreating the early history of the CPC. In recent years, the memorial has introduced distinctive exhibition services and programs such as menu-style service, Girls’ School Immersive Tours, and traveling exhibitions, continuously expanding the scope and influence of Party history communication and education.

Address: No. 30 Lane 7, North Laochengdu Road, Jing’an District
Opening Hours: 9:00-16:30 Tuesday to Sunday (Last admission at 16:00) (Closed on Mondays, except public holidays)

Memorial for the Former Site of the CPC Central Military Commission

The Memorial for the Former Site of the CPC Central Military Commission is located at No. 12 Lane 613, Xinzha Road, Jing’an District (formerly No. 1015 Jingyuan Lane, Xinzha Road) in a Shikumen-style building constructed in 1919. It was recognized as a historical and cultural heritage site protected at the municipal level in September 1962. The CPC Central Military Commission (also known as the Military Department) and its related departments were important military leading organs of the CPC Central Committee. This place witnessed the glorious deeds of revolutionary leaders such as Zhou Enlai, Yang Yin, and Peng Pai. It also witnessed the trials of the army as a vital milestone in the country’s military history. The CPC’s early military struggles and its exploration in this regard forged the loyalty and courage of the people’s army, established its revolutionary traditions as the people’s armed forces and provided valuable experience for the army’s growth. They also paved the way for Mao Zedong’s theory of encircling cities from rural areas and seizing power with military force.

The memorial was opened to the public on May 10, 2021. With an exhibition area of 192 m², it comprises five sections: “Preface,” “Planning and Establishment of the CPC Central Military Commission,” “Advancing in the Great Struggle to Establish the People’s Army,” “Historical Achievements and Lessons in Guiding the Establishment of the Red Army,” and “History and Prominent Figures of the CPC Central Military Commission in the Early Days.” Through a variety of mediums, including photos and text, artifacts, videos and audios, the memorial chronicles the eight-year history of the CPC Central Military Commission, from its establishment to its relocation



from Shanghai to the Soviet Area in January 1933. The exhibition shows how, under the leadership of the CPC Central Committee, the revolutionary forefathers risked their lives and made extraordinary efforts to address major issues such as arming workers and peasants, launching uprisings, creating the people's army, and guiding the establishment of the Red Army.

Address: No. 12 Lane 613, Xinzha Road, Jing'an District

Opening Hours: 9:00-16:30 Tuesday to Sunday (Last admission at 16:00) (Closed on Mondays, except public holidays)

Memorial for the Former Site of the General Secretariat of the CPC Central Committee

This three-bedroom Shikumen-style house, located at No. 10 Lane 673, Jiangning Road, Jing'an District (formerly Wenyu Lane, Gordon Road), was one of the offices of the General Secretariat of the CPC Central Committee from 1927 to 1931. The General Secretariat was the primary service organ directly supporting the CPC Central Committee. It held a central position among all functioning institutions, maintaining extensive contact with various Party organs and playing a pivotal role in ensuring the work of the CPC Central Committee, thereby playing a special and crucial role.

A restoration project for the site was launched in 2020, adhering to principles of historical accuracy and minimal intervention to restore the original Shikumen style. In June 2021, the site began trial operations in the form of exhibition of artifacts. In late June 2023, the memorial was completed and opened to the public. Covering a total exhibition area of 505 m², the memorial consists of several sections, including a sculpture



area, the restored site, and basic displays. For the first time, the memorial provides a comprehensive and panoramic presentation of the General Secretariat's history in Shanghai. The exhibition is divided into three parts: "Embarking on a Remarkable Journey", "Shining in Dark Nights" and "Quenching to be Gold," highlighting the heroic deeds of the unsung heroes who, despite adversity, demonstrated intelligence, courage, selflessness, and loyalty. It showcases the noble spirit of the Party's secretarial staff, characterized by their dedication to truth and duty, humility, resourcefulness and perseverance without seeking recognition or reward.

Address: No. 10 Lane 673, Jiangning Road, Jing'an District

Opening Hours: 9:00-16:30 Tuesday to Sunday (Last admission at 16:00) (Closed on Mondays, except public holidays)

Memorial for the Former Site of the Special Task Division of the CPC Central Committee

The Special Task Division (STD) of the CPC Central Committee was an intelligence and security agency established by the CPC in Shanghai from 1927 to 1935. It was personally organized and overseen by Zhou Enlai, later led by Chen Yun, Nie Rongzhen, Chen Geng, and Pan Hannian. During the CPC Central Committee's time in Shanghai, the STD carried out extensive and effective operations on the covert front. It made notable contributions in safeguarding the CPC Central Committee and Party organizations, combating enemy forces, punishing traitors, acquiring intelligence, and developing communication and liaison networks, being hailed as the Red Fortress that protected and served the CPC Central Committee. The STD



also laid a solid foundation for the Party's covert operations during the War of Resistance against Japanese Aggression and the War of Liberation.

The Memorial for the Former Site of the STD of the CPC Central Committee is located at No. 14 Lane 930, Wuding Road, Jing'an District. The building is a modern, brick-and-wood lane residence with two floors and an attic. In April 2014, the site was recognized as one of Shanghai's eighth batch of historical and cultural heritage sites protected at the municipal level. In April 2024, it was converted into a memorial and opened to the public. The memorial's exhibition is divided into six sections: "Preface," "Establishment of the STD," "Major Achievements of the STD," "Prominent Figures of the STD," "Special Exhibition of STD's Major Achievements," and "Closing Remarks." The exhibition provides a comprehensive overview of the establishment, development, achievements, and key figures of the STD, highlighting its role in covert operations.

Address: No. 14, Lane 930, Wuding Road, Jing'an District

Opening Hours: 9:00-16:30 Tuesday to Sunday (Last admission at 16:00) (Closed on Mondays, except public holidays)

Exhibition Hall of the Former Site of Secretariat of China Labor Association

On July 23, 1921, the First CPC National Congress was held in Shanghai, marking the official founding of the Party. At the congress, it was proposed that the Party's central task at the time was to organize the working class and strengthen its leadership over the workers' movement. On August 11, 1921, the Secretariat of China Labor Association was established by

the CPC Central Committee as the public leading organ of the labor movement.

As one of the sources of revolutionary legacy in Shanghai, the Former Site of Secretariat of China Labor Association was recognized as a historical and cultural heritage site protected at the municipal level in May 1959. In September 1992, the site was restored and opened to the public as an exhibition hall. In January 2010, it was named a municipal base for patriotism education by the Shanghai Municipal People's Government. Covering an area of approximately 276 m², the exhibition hall consists of five sections: "Preface," "Glorious Starting Point," "Hard-fought Years," "Ups and Downs of Labor Movement," and "Realizing the Chinese Dream of the Great Rejuvenation." Through rich historical materials, rare archival image and footage, artistic creations such as dynamic oil paintings and comic strips, scene restorations, and advanced virtual technology, the exhibition vividly depicts how the Secretariat of China Labor Association, under the CPC's leadership, expanded from Shanghai to the rest of the country. It brings to life the organization's efforts to promote Marxism-Leninism among workers, help them organize industrial unions, and lead and support workers' movement.

Address: No. 1-11 Lane 893, North Chengdu Road, Jing'an District

Opening Hours: 9:00-12:00 (Last admission at 11:30) and 13:00-16:30 (Last admission at 16:00) Tuesday to Sunday





Former Residence of Mao Zedong in Shanghai

Located at No. 7 Lane 120, North Maoming Road (formerly No. 318 Jiaksiuli Lane, Moulmein Road), the residence is a Shikumen-style house. Mao Zedong lived here with his wife Yang Kaihui, his sons Mao Anying and Mao Anqing, and his mother-in-law Xiang Zhenxi from June 1924 to the end of the year. Among Mao's many visits to Shanghai, his stay at Jiaksiuli was the longest. During his time in Shanghai, Mao continued to serve as secretary of the CPC Central Bureau, responsible for the work of the Organization Department and assisting Chen Duxiu in the daily work of the Central Committee. He also held several positions in the Shanghai Executive Department of the Kuomintang (KMT), making significant contributions to maintaining cooperation between the CPC and the KMT.

Jiaksiuli was recognized as a historical and cultural heritage site protected at the municipal level in 1977. The Former Residence of Mao Zedong in Shanghai, opened to the public on December 26, 1999, is now a base for patriotism and Party history education in Shanghai. The exhibition area is divided into four sections, including a permanent exhibition, a chronicle of Mao Zedong's visits to Shanghai after the founding of the People's Republic of China, a display of artifacts, and a scene recreation. Through extensive historical materials and rare archival image and footage, the exhibition vividly portrays Mao Zedong's revolutionary experiences in Shanghai and his selfless dedication to the country.

Address: No. 5-9 Lane 120, North Maoming Road, Jing'an District
Opening Hours: 9:00-12:00 (Last admission at 11:30) and 13:00-16:30 (Last admission at 16:00) Tuesday to Sunday

Memorial for the Office of CPC Central Bureau after the Third CPC National Congress

After the Third CPC National Congress was held in Guangzhou in June 1923, the CPC Central Bureau was relocated to Sanzengli in Shanghai, near the then Shanghai Railway Station on Xiangshan Road (now Linshan Road). Members of the Central Bureau, such as Mao Zedong, Cai Hesen, and Luo Zhanglong, resided here. Sanzengli was later destroyed during the Japanese invasion of Shanghai in 1937. In January 2007, a memorial commemorating the office was completed and opened to the public at No. 118, North Zhejiang Road.

Under the theme of "A Glorious Age in the Party's History and An Eternal Monument," the central exhibition area features the life and work of the Central Bureau members at Sanzengli after the Third CPC National Congress, highlighting the strong beliefs, discipline and struggle of the veteran revolutionaries for the liberation of the nation. The supporting area celebrates the city's revolutionary tradition with a display of historical materials about a series of revolutionary struggles led by the CPC in Shanghai.

Address: No. 118, Zhejiang Road, Jing'an District
Opening Hours: 9:00-12:00 (Last admission at 11:30) and 13:00-16:30 (Last admission at 16:00) Tuesday to Sunday



Exhibition Hall of the Former Site of the CPC Songpu Special Committee Office

The CPC Songpu Special Committee was an institution led by veteran proletarian revolutionaries such as Chen Yun and Hang Guoren, responsible for revolutionary activities and directing movements of peasants in Shanghai from 1928 to 1929. In November 1987, the Former Site of the CPC Songpu Special Committee Office was recognized as a historical and cultural heritage site protected at the municipal level by the Shanghai Municipal People's Government. Due to urban development needs, from 2007 and 2010, the site was relocated from No. 5 Lane 387, Shanhaiguan Road to No. 339, Shanhaiguan Road, with approval from the National Cultural Heritage Administration. On July 1, 2012, Jing'an District established an exhibition hall at the new location and opened it to the public.

With a floor area of about 410 m², the exhibition hall features pictures, artifacts, restored scenes and wood engravings, providing visitors with an overview of the CPC Songpu Special Committee and the peasants' armed struggle it led in Zhuanghang Town, Fengxian, and Xinjie Town, Jinshan.

Address: No. 339, Shanhaiguan Road, Jing'an District

Opening Hours: 9:00-12:00 (Last admission at 11:30) and 13:00-16:30 (Last admission at 16:00) Tuesday to Sunday



CPC Shanghai Underground Struggle Exhibition Hall and Former Residence of Liu Changsheng

This building was one of the secret offices of the CPC Shanghai Bureau and the residence of Liu Changsheng during his revolutionary activities in Shanghai from 1946 to 1949. During the War of Liberation, it was the center of the CPC Shanghai branches. From this building, the CPC members led the people of Shanghai in the struggle for peace and democracy and supported the People's Liberation Army in the successful liberation of Shanghai, making a remarkable contribution.

The four-story building was built in 1916 with an area of 927 m². In June 2001, the whole building was moved 118 meters to the east using the building reinforcement and relocation technology. The exhibition hall was opened to the public on May 27, 2004 and it has been designated as a base for patriotism and Party history education in Shanghai. Covering a floor area of 800 m², the exhibition hall consists of exhibition areas on three floors. On the first floor is the restored Massing Cafe, which was built by the Cultural Commission under the



CPC Central Committee for the Left League. On the second and third floors are sculptures, scene restoration and simulation and artifacts, showing how Liu Xiao, Liu Changsheng, Zhang Chengzong and other revolutionaries developed the underground organization for struggles in Shanghai in 1937-1947.

Address: No. 81, Yuyuan Road, Jing'an District

Opening Hours: 9:00-12:00 (Last admission at 11:30) and 13:00-16:30 (Last admission at 16:00) Tuesday to Sunday

Site of Mao Zedong's Residence in 1920

The residence of Mao Zedong in 1920 is located at No. 63 Anyi Road (formerly No. 29 Minhouan Lane, Hardoon Road). It is a two-story brick-and-wood building facing north along the street. The first floor is furnished with a square table and several chairs for receiving visitors and dining. The second floor and the garret were bedrooms. Mao Zedong lived here from May 5, 1920 until early July.

During his stay, Mao Zedong fought to expel Hunan warlord Zhang Jingyao and deliberated on the transformation of Hunan. He published six articles in *Shenbao* (*Shun Pao*), including "Declaration on the Initiation of Hunan Transformation Promotion Association," "Self-determination of Hunan People," and "Discussion on Hunan Construction." He also attended the Bansong Garden Conference, discussed the issues of Xinmin Society, and sent Hunan youth to work and study in France. Most significantly, Mao Zedong frequently visited Chen Duxiu, who was engaged in founding the CPC, to discuss Marxism. In a talk with Edgar Snow, Mao recalled that, "By the summer of



1920, I had become a Marxist in theory." During his time at the Anyi Road residence, Mao Zedong chose his life path and transitioned from a radical democrat to a Marxist. This residence is thus a witness to a pivotal stage in his revolutionary journey.

In 1959, this residence was named a historical and cultural heritage site protected at the municipal level by the Shanghai Municipal Administration of Cultural Heritage.

In 2018, it was designated a learning center for the city's life-long learning initiative.

Address: No. 63, Anyi Road, Jing'an District

Opening Hours: 9:00-11:30 and 13:00-16:30 Tuesday to Sunday

Huzhou Guild Hall: Historical Site of Shanghai Federation of Trade Unions and Shanghai Workers' Third Armed Uprising Headquarters

Built in 1900 by natives of Huzhou, Zhejiang, Huzhou Guild Hall covers an area of about 13,000 m². From March to April 1927, it was the headquarters of the third armed uprising of workers in Shanghai and the site of the Shanghai Federation of Trade Unions. Before that, it was occupied by the Northern Warlords. Most of its original buildings were destroyed by the Japanese invaders on January 28, 1932.

The third armed uprising of workers in Shanghai broke out on March 21, 1927. After the picket seized Huzhou Guild Hall on March 23, Shanghai Federation of Trade Unions adopted it as its official site and started operations on March 24. On March 25, Zhao Shiyan held a press conference at the guild hall in his capacity as commander of the picket. On March 27, the Shanghai Workers' Congress was convened at the hall, where Wang Shouhua reported on the uprising and outlined the future work of the Shanghai Federation of Trade Unions. On March 29, with support from the CPC, the Provisional Municipal Government of the Special City of Shanghai was established. Members of the administration included Luo Yinong and other nine CPC and Communist Youth League members. This provisional government was the first revolutionary government formed by the people in a major city under the Party's leadership.

Huzhou Guild Hall is one of the key projects in Shanghai's initiative to use and promote the city's labor movement resources. Under the leadership of the Shanghai Federation of Trade Unions and the CPC Jing'an District Committee, the



Jing'an Federation of Trade Unions and the CPC Baoshan Road Sub-district Work Committee redesigned the exhibition in 2020. Following the principle of historical accuracy, the overdoors and the interior have been renovated, and relevant historical materials are now on display through multimedia and 12 copperplate etchings. The hall was reopened to the public in June 2021.

Address: No. 828 Zhongxing Road, Jing'an District (Close to North Xizang Road)
Opening Hours: 9:00-16:00 Tuesday to Sunday (Closed on Mondays. Any adjustments will be announced separately.)

Birthplace of CPC's Encrypted Radio Communications: An Exhibition

The exhibition "Red Radio Waves Through History" about the Birthplace of the CPC's Encrypted Radio Communications is located at No. 396-2 West Yan'an Road (west of the first floor of Merry Hotel Shanghai), with a floor area of 333.19 m² and an exhibition area of approximately 210 m². The exhibition is divided into four sections that elaborate on the Party's initiation of encrypted radio communications, its early practices, historical contributions, and the prominent figures in this field. It features over 50 artifacts, including valuable manuscripts, letters, documents, and various items. There are more than 20 videos, including the 3D film *Unsung Heroes*, the documentary *Red Radio Waves Through History*, rare footage and interviews with the descendants of the revolutionaries as well as numerous artistic creations and interactive features. The exhibition vividly presents the Party's four firsts in its communication history—the first radio station, the first long-distance encrypted radio communication,

the first set of radio communication codes, and the first training session for radio communication professionals and cryptographers.

In the autumn of 1929, under the direct leadership of Zhou Enlai, the CPC's first radio station was established at No. 9 Fukang Lane on Daxi Road (near today's No. 396 West Yan'an Road). Li Qiang was in charge of technical affairs, and Zhang Shenchuan was responsible for telecommunication duties. After Li Qiang and others set up a branch station in Hong Kong at the end of that year, the Shanghai and Hong Kong stations had their first long-distance encrypted radio communication in early January 1930, signifying the official beginning of the CPC's encrypted radio communication work. This work evolved from non-existence to prominence, becoming an "airborne bridge" to strengthen centralized and unified leadership of the Central Committee, an "efficient method" to protect and expand revolutionary forces, a "vital tool" for guiding revolutionary battles, a "talent incubator" for the Party and Red Army's encrypted communication efforts, and a "special lifeline" of the Party and the people's army. It provided crucial assurance for the timeliness, relevance, security, and effectiveness of directives from the Central Committee and the Central Military Commission. It contributed significantly to the Central Committee's unity and leadership over all Party members, armed forces, and people of all ethnic groups and the ultimate victory of the New Democratic Revolution. It made pioneering, foundational, and historic contributions to the communications endeavor of the Party, the people's army, and new China.

Address: No. 396-2, West Yan'an Road, Jing'an District (west of the first floor of Merry Hotel Shanghai)
Opening Hours: 9:00-16:30 Tuesday to Sunday (Last admission at 16:00) (Closed on Mondays. Separate notices will be provided for public holidays.)





静安 概貌



（一）发展目标	59
（二）行政区划	60
（三）历史沿革	69
（四）文明城区	69
（五）红色印记	70

2015年10月，国务院批复原闸北、静安两区“撤二建一”，设立新的静安区。全区总面积约37平方公里，常住人口92.93万，下辖13个街道1个镇，268个居（村）委会。“静安”因千年古刹静安寺而得名，地处上海市中心，周边与6个区相邻，作为上海中心城区核心区，商业商务繁荣，资源要素丰富，国际往来频繁，城区环境优美，社会事业发达，生活配套便捷，是“最上海、最国际、最时尚”的标志性地区。

（一）发展目标

锚定二〇三五年远景目标，“十四五”时期，加快建设全球服务承载区、创新创业活力区、现代治理标杆区、国际文化大都市核心区和美好生活实践区，到2025年，城区能级和核心竞争力持续提升，全面建设服务功能更加完善、综合实力更加雄厚、城区治理更加高效、文化魅力更加彰显、群众生活更加美好的“国际静安、卓越城区”，率先实现高能级服务、高质量发展、高效能治理、高品位文化、高品质生活和高水平参与，基本建成卓越的现代化国际城区。

——**服务功能更加完善。**“全球服务商计划”全面实施，大力集聚和培育高能级全球服务机构，形成了咨询服务、法律服务、会计服务、人力资源、检验检测等门类齐全、业态丰富的专业服务业集群，区域经济深度融入全球服务网络，“聚静安、在上海、为全国、链世界”效应持续扩大，形成具有静安特点的全面开放新格局，城区核心竞争力、投资吸引力、辐射影响力、功能承载力显著增强，成为上海畅通国内大循环和联通国内国际双循环的重要节点。

——**综合实力更加雄厚。**一般公共预算收入总量保持中心城区领先，年均增长率3%—5%。地区生产总值与全市保持同步增长。创新体系日趋完善，产业结构优化升级取得新突破，产业基础高级化、产业链现代化水平明显提高，与上海“五个中心”“四大功能”相适应、符合区域定位的新产业、新业态、新模式不断发展壮大，数字城区建设形成基本框架，世界级大数据和生命健康等新兴产业集聚形成规模效应，基本形成优质高效、充满活力、更可持续的高端现代服务业体系。

——**城区治理更加高效。**“一网通办”“一网统管”高效运转，城区治理科学化、精细化、智能化水平不断提高，城市更新迈出新步伐，空间布局进一步优化，生态环境质量稳定向好，单位增加值能耗和二氧化碳排放下降率完成市下达目标，市容环境保持常态优良、社会公众满意度位居全市前列，城区安全、韧性显著增强，加强和创新社会治理走出静安新路，基层和社区活力进一步激发，共建共治共享的生动局面基本形成，成为上海最有序、最安全、最干净的城区之一。

——**文化魅力更加彰显。**红色文化、海派文化、江南文化资源得到更好的开发和保护利用，公共文化服务体系和文化体育设施布局进

进一步完善，文化创意产业持续发展壮大，国际多元文化合作不断丰富，静安特色文化品牌更加闪亮，居民文明素质和城区文明程度全面提升，城区文化软实力和国际影响力进一步增强。

——**群众生活更加美好。**社会保障体系进一步完善，数字化、多样化、高品质、个性化公共服务供给更加丰富便利，养老服务供给更加充分、均衡、多样，完成全部二级旧里以下房屋改造任务，促进学生全面而有个性的发展，人均预期寿命高于全市平均水平，使静安成为上海更具魅力、更有温度、人人向往的高品质美好城区。

（二）行政区划

1. 区划概况

静安区下辖 13 个街道 1 个镇，包括静安寺街道、曹家渡街道、江宁路街道、石门二路街道、南京西路街道、天目西路街道、北站街道、宝山路街道、芷江西路街道、共和新路街道、大宁路街道、彭浦新村街道、临汾路街道、彭浦镇。目前静安区共有 268 个居（村）委会（包括 267 个居委会和 1 个村委会）。

2. 街道介绍

（1）静安寺街道

静安寺街道位于静安区西南部，东起富民路、常德路，西迄镇宁路，南至长乐路，北接万航渡路、新闸路。辖区面积 1.57 平方公里，下辖 11 个居委会，以集高楼林立、交通便捷、人文荟萃于一体而闻名沪上。

近年来，街道坚持践行人民城市理念，充实“同心家园”党建品牌内核，探索实践党建引领基层治理“六建六同”总布局，朝着党建引领同心、民主同商、发展同促、治理同行、资源同享、文化同乐的目标奋斗。同时坚持将全过程人民民主贯穿于加强社会治理的始终，积极推进城区治理现代化，指导居民区运用“五好五议”开展基层治理全过程人民民主实践。努力以基层党建理念的不断完善和提升，达到基层最优善治，打造中国式现代化生动实践的街道样本。

街道是上海楼宇党建发源地、始发站。街道市容环境质量社会公众满意度测评连续 30 次蝉联全市第一，荣膺全国文明单位、全国最美志愿服务社区、全国社区教育示范街道、全国文化先进社区、上海市先进基层党组织、上海市人民满意公务员集体等称号。

（2）曹家渡街道

曹家渡街道位于静安区西南部，东起胶州路，西到长宁路、江苏路，



南临武定西路、新闸路，北至长寿路、安远路，与普陀区、长宁区接壤，辖区面积 1.49 平方公里，下辖 14 个居委会，有“沪西小上海”之称。

近年来，街道坚持践行人民城市理念，围绕“一轴五圈三样板”，即以武宁南路为活力发展轴，建设“五色生活圈”（绿色宜居圈、金色宜业圈、橙色宜购圈、紫色宜学圈、银色宜养圈），“三大样板间”（国际范一延武胶创新创意样板间、国潮范一万航渡路人文底蕴样板间、安居范一昌平路医体康养食样板间），全力绘就“精彩样板间、宝藏曹家渡”新蓝图。

街道获评全国社区教育示范街道、全国全民阅读活动先进单位、全国群众体育先进单位、全国创建学习型家庭示范社区、全国节约型机关和全国“四好”商会等多项国家级荣誉，入选全国城市一刻钟便民生活圈试点地区，先后被授予上海市文明社区、上海市学习型社区、上海市食品安全示范街道、上海市平安示范社区等诸多市级荣誉称号。

（3）江宁路街道

江宁路街道位于静安区南部，是静安区人民政府所在地。街道东起泰兴路、西苏州路，西沿胶州路、常德路，南接新闸路、北京西路，北至安远路，辖区面积 1.84 平方公里，下辖 16 个居委会。

近年来，街道持续学思践悟“做服务人民的孺子牛”殷殷嘱托，围绕“一廊一河两街区”15 分钟社区生活圈规划（一廊：昌平路社区主廊道；一河：苏州河城市水岸画卷；两街区：陕西北路历史人文街区、常德路“创想天地”产业街区），打造“宁聚·人人”党建引领基层治理品牌，合力建设“美丽江宁”善治共同体。



街道荣膺全国综合减灾示范社区、全国社区教育示范街镇、国家级充分就业社区、上海市文明社区、上海市先进基层党组织、上海市食品安全示范社区、上海市平安示范社区、全市首批“垃圾分类示范街镇”等称号。2016 年成为上海市人大常委会首批“基层立法联系点”；2022 年，在全市率先建成嵌入式、标准化的社区宝宝屋。

（4）石门二路街道

石门二路街道东起成都北路，南临南京西路，西至江宁路折武定路接泰兴路，北枕南苏州路，坐拥南京西路“千亿商圈”与苏河湾“世界级滨水会客厅”双重辐射优势，产城融合、宜居宜业。辖区面积 1.07 平方公里，下辖 11 个居委会。

近年来，街道深化帮扶救助体系，优化公共空间布局，构筑温馨石二；压实安全生产责任，维护公共安全，共建平安石二；擦亮红色文化品牌，提供优质公共文化产品，建设人文石二；推动共建共治共享，引领服务群众，打造活力石二。不断深化“邻里石二”城市治理共同体建设，实现街区环境品质蝶变升级。

街道先后荣获全国民族团结进步模范集体、全国社区宣传思想工作示范点、全国智慧健康养老应用试点示范街道、全国先进残疾人之家、全国“四个 100”最美志愿服务社区，国家机关事务管理局颁发的“节约型机关”及上海市文明社区、上海市平安社区、上海市民族团结进步先进集体、上海市生活垃圾分类示范街镇、“第五批上海市星级充分就业社区”等国家级、市级荣誉多项。



（5）南京西路街道

南京西路街道于 1994 年由原威海路街道和延安中路街道合并而成，地域面积 1.62 平方公里，下辖 12 个居委会，以“福民南西、魅力都心”为愿景。

基本街情可概括为：“一金”“两白”“三品牌”。一“金”，是指南京西路街道从地图上看形似一把“金钥匙”，南京西路街道位于静安区最南侧，与黄浦区南京东路街道、瑞金二路街道以及徐汇区湖南路街道相邻，市交通主动脉延安高架贯穿辖区，轨道交通 2 号、7 号、12 号、13 号线均在辖区内设站。两“白”，是指“白领”“白发”为南京西路街道各项工作的主要服务对象，60 岁以上老年人口占户籍人口总数的 47%，辖区共有楼宇 48 栋，日常通勤白领超过 11 万人。“三品牌”，是指南京西路街道长期以来结合区情实际形成了三工作品牌：“Nancy”系列文化品牌、“金钥匙”群众工作品牌和“福民”系列党建引领基层治理工作品牌。

近年来，南京西路街道获评全国文明单位、全国群众体育先进集体、国家机关事务管理局颁发的“节约型机关”、上海市平安示范社区、上海市五四红旗团委标兵、上海市爱国拥军模范街道、上海市儿童友好社区示范点、上海市五一劳动奖状等荣誉称号。

（6）天目西路街道

天目西路街道位于静安区中部，环绕铁路上海站，东起南北高架，南、西临苏州河，北靠中山北路。面积 1.94 平方公里，下辖 12 个居委会。

辖区呈现“四个”特点：一是静安“一轴三带”战略的承载区。位于“苏河湾滨水商务集聚带”，是高质量发展的主要阵地，在地企业约 5000 家，商办楼宇 64 幢，有全国第一家国家级人力资源服务产业园—中国上海人力资源产业园。二是交通便捷的枢纽站。辖区既有“两站”（上海火车站、上海长途汽车客运总站）+“五轨交”，又有近四十条公交线路。三是城市更新的新家园。伴随十五分钟社区生活圈建设、金融街、丽丰天际等先后竣工和蕃瓜弄旧住房改建的大力推进，城区品质不断提升。四是基层治理的实践地。辖区被铁路划分南北两块，以党建引领推进融网强格、善治和合，着力实现社区治理精细化、现代化。

街道先后荣膺全国先进基层党组织、全国智慧健康养老应用试点示范街道和上海市先进基层党组织、上海市社区事务受理服务中心标准化建设评比第一等荣誉称号和奖项。

（7）北站街道

北站街道地处苏河湾核心区域，东靠河南北路、罗浮路，西沿南北高架路，南至苏州河，北至京沪线铁路。辖区面积 1.74 平方公里，下辖 14 个居委会。

街道区位优势显著，立体交通畅达，历史文化底蕴深厚。近年来，街道深入推进“精细化管理滨水示范区”建设，积极打造“滨水艺术走廊”，着力构建苏河滨水商圈党建共同体，不断优化营商环境，推动文旅商体展融合发展。依托苏河湾中心、万象天地、静安大悦城等核心商业商务载体，二次元经济活力迸发，楼宇、园区蓬勃发展。围绕“苏河湾上、万象更新，汇能北站，大悦未来”的目标，正在加速建设成为苏河湾世界级滨水商务区核心区域。

近年来，街道荣获上海市文明社区、全国“四好”商会、上海市“四好”商会、新创上海市市容环境综合管理示范街道、上海市儿童友好社区等荣誉称号。

（8）宝山路街道

宝山路街道位于静安区中部，东起东宝兴路，西迄西藏北路，南至轨道交通 3/4 号线，北接中山北路，辖区面积 1.62 平方公里，下辖 18 个居委会。地理位置优越，交通便捷，设有 3 个轨交站点；教育资源丰富，拥有市北中学等 13 所学校；医疗资源丰富，包含市中医医院等 3 所医院。

街道是内环内居住型社区，当前处于快速转型发展阶段。雅宾利四期、静安华府、中兴路一号、保利象山里等住宅项目正在建设，街区形态发生着日新月异的变化。街道素有“红色宝山路”之称，有上海总工会遗址宝山里 2 号、湖州会馆、商务印书馆等 26 处革命遗址，“觉醒之路——红色宝山路 CityBus 和 CityWalk 移动红客厅”党课将其串珠成链，持续打造宝山路红色文化街区，正逐步转型为“高端、



和谐、宜居”的新型社区。

街道先后荣膺全国综合减灾示范社区、“全国科普日优秀活动”单位、全国“节约型机关”等国家级荣誉，市平安社区、无违建示范街镇、生活垃圾分类示范街镇等市级荣誉。街道社区事务受理服务中心蝉联上海市“5A”级受理中心称号，街道城运中心获评市 12345 市民服务热线系统立功竞赛地区组先进集体。

（9）芷江西路街道

芷江西路街道位于静安区中南部，东至西藏北路，南至交通路，西至大统路、普善路，北至中山北路。辖区面积 1.64 平方公里，下辖 18 个居委会。

街道奋力打造新时代更富特色、更具人情味道的“安心芷江”，创新探索“骑享帮办”政务延伸机制，持续丰富上门帮办内容。不断推动“15 分钟社区生活圈”规划建设，以五月花生活广场为代表的商业体，以“芷引力”“百乐汇”“邻里汇”党群服务中心为代表的公共服务设施，形成了业态齐全、功能完善、服务优质、商居和谐的生活圈。重点推进永兴汇、孔雀创意园区两大载体建设，打造“服务‘芷’为你”品牌，不断完善企业服务管家制度，全力打通惠企服务堵点难点。

近年来，街道荣获全国侨联系统侨胞之家典型选树单位、全国推

动政务公开民主管理工作先进单位、上海市平安社区、上海市生活垃圾分类示范街镇、上海市无违建示范街镇、上海市五一劳动奖状、上海市优秀学习型社区等荣誉称号。

（10）共和新路街道

共和新路街道位于静安区中部，南起中山北路，东抵西宝兴路与虹口区接壤，西达沪太路与普陀区交界，北至延长路、老沪太路。辖区总面积约 2.72 平方公里，下辖 27 个居委会。

街道以“新善治”党建品牌为引领，探索善治网格“多格合一”工作体系，打造“善业、善学、善居、善养”四大主题功能街区，深度赋能基层治理。街道以“两美建设”为契机持续提升辖区品质，以旧区改造和旧住房改造为抓手不断增强民生福祉。通过打造“15 分钟社区生活圈”“乐龄生活圈”“公共文化圈”，为居民提供全方位、全天候、全年龄的公共服务。街道从传统文化传承与专业科普教育入手持续推进茶文化推广和茶行业市场工作，形成红色党建 + 传统文化“红绿”两张名片。

近年来，街道荣膺全国智慧健康养老示范街道、全国综合减灾示范社区、国家级节约型机关、市儿童友好社区、市级文明社区、市平安示范社区、市爱国拥军模范街道、市食品安全优秀志愿者集体等称号；成功创建上海首批“视健未来”标准化综合防控近视明眸基地。

（11）大宁路街道

大宁路街道位于静安区中北部，辖区面积 6.24 平方公里，东起北宝兴路、粤秀路，南临延长路、老沪太路，西至普善路、万荣路，北抵走马塘河、北郊铁路，下辖 25 个居委会。

街道深入践行人民城市理念，推进“活力大宁”生动实践。坚持党建引领网格治理，践行“融网、筑基、强格、善治”思路，打造“1+3+7+N”网格阵地体系。建好“宁的书房”，擦亮“五服临门”营商品牌；做实“宁的餐厅”，优化助餐、养老服务；围绕基层治理，夯实“全域门责”、推动数字赋能、强化“宁安联盟”、焕新“三自树”等传统品牌。发挥区域化党建平台作用，链接大宁国际商业广场、大宁久光中心、上海马戏城、海上文化中心、静安体育中心以及上海大学、市第十人民医院、同济口腔等丰富资源，全力推进“15 分钟社区生活圈”建设。

街道聚力高品质城区建设，成功创建成为全国智慧健康养老示范街道、全国最佳志愿服务社区、全国侨联系统先进基层组织、全国爱心托育用人单位、全国退役军人服务保障先进单位。

（12）彭浦新村街道

彭浦新村始建于 20 世纪 50 年代，是上海市最早建立的工人新村之一。彭村新村街道位于静安区西北部，东至岭南路，西到东茭泾河，南临场中路、走马塘，北接共康路和高压线走廊，北面、西面与宝山

区接壤。辖区面积 3.81 平方公里，下辖 33 个居委会。

街道传承弘扬“四个特别”精神，努力打造“静安北亮点”。在全市率先完成非成套旧住房改造工作，历经二十年受益居民 4907 户，创新探索的“改扩建”“加层扩建”“拆除重建”非成套旧住房改造“彭浦模式”，为全市乃至全国城市更新建设探索了新路径。优化完善“三横三纵”社区养老服务新体系，全面打造“15 分钟社区生活圈”，提升公共服务效能。深化“多格合一”治理模式，强化数字赋能，增进网格治理实效。

近年来，先后获得全国民族团结进步模范集体、上海市首批无违建街镇、上海市城市综合管理立功竞赛优秀单位、上海市平安社区、上海市市容环境综合管理示范街镇，连续 9 届蝉联上海市爱国拥军模范街镇等 30 多项国家级、市级荣誉。

（13）临汾路街道

临汾路街道成立于 1988 年，地处上海静安、虹口、宝山交界，辖区面积 2.12 平方公里，下辖 20 个居委会。

三十年来，临汾路街道始终不忘初心、牢记使命，以砥砺前行的奋斗姿态集中展现了改革开放以来中国共产党在城市街道社区依靠群众、动员群众、组织群众、服务群众，领导广大人民群众共同创造美好生活的历程。临汾路街道重点实施党建网格、数智化转型，为老服务、完整社区等项目，有力推动了超大型城市社区的精细化管理，先后成为中联部党际交流的对外展示窗口，国际社会感知中国的新闻采访点，也是复旦大学中组部干部培训中心和中国浦东干部学院、市委党校的现场教学点。

街道先后荣获全国先进基层党组织、全国思想政治工作先进典型、全国人民满意的公务员集体等近 50 项国家级荣誉。

（14）彭浦镇

彭浦镇东临共和新路，西接沪太路；南至老沪太路，北到场中路。辖区面积 7.88 平方公里，下辖 36 个居委会，1 个村委会。

彭浦镇位于上海中环黄金走廊，是静安区“一轴三带”发展战略中环两翼创新创业集聚带的重要发展节点。彭浦镇拥有 33 个楼宇园区，自持载体超 70 万平方米，在税收表现上，有 10 个达到亿元级；在产业贡献上，围绕静安特色六大产业，逐步形成了龙头引领、链群互动、生态发展、企业集聚的多元产业发展格局。

彭浦镇在历史发展中，曾取得四个“第一”（全国第一批“亿元乡镇”；全市第一个实行农民退养制度；全市第一个完成所有农村人员户口“农转非”；第一批“中国民间艺术之乡”），连续六次蝉联“中国民间文化艺术之乡（摄影）”称号。先后荣获全国综合减灾示范社区、全国卫生镇、上海市文明社区、上海市平安示范社区、上海市优秀学习型社区、上海市爱国拥军模范街道（乡镇）等荣誉称号。



(三) 历史沿革

静安区因境内古刹静安寺而得名。区境吴淞江（故道）以北，南宋嘉定十年（1217年）前隶属昆山县，后隶属嘉定县、宝山县。吴淞江（故道）以南，元至元二十八年（1291年）隶属华亭县，之后及明、清二代隶属上海县。虬江是上海县和宝山县的界河，民国初筑路时被填没。清同治二年（1863年），境域中南部被辟为美租界，后并为公共租界。光绪二十五年（1899年），境域南部大部分划入公共租界西区。为抵制租界扩张，清光绪二十六年（1900年），闸北绅商建立闸北工程总局，自辟商埠。1914年，法租界扩张，将境内长浜路（延安中路）、徐家汇路（华山路）以南地区全部划为法租界。故境域南部为法租界、公共租界和北部主要为华界。1927年7月，上海特别市政府接收17个市乡，次年7月，将旧市乡一律改称为区，闸北市改称闸北区。30年代，日军发动两次淞沪战争，闸北区几成废墟，成为上海市出名的棚户区。1937年上海沦陷时期，日伪将闸北区改为闸北政务署，沪北区公署。公共租界在太平洋战争前成为“孤岛”。1945年抗日战争胜利后，境地分属第十区、十一区、十二区、十四区、十五区及二十二区、二十四区部分区域。1947年，第十四区称闸北区、第十五区称北站区。1949年5月30日，市军管会接管静安区，一度将区名改为静安寺区，1950年6月28日，复改称静安区。解放初期，境域分属静安、新成、江宁、闸北、北站区。1956年，上海市区调整，静安区建制撤销，以富民路、常德路为界，东境划归新成区，西境并入长宁区，闸北、北站两区合并成闸北区。1960年1月，区划再次调整，撤销新成区、江宁区，将新成区成都北路以西部分、江宁区全部、长宁区镇宁路以东部分合并重建静安区。2015年11月，上海市委、市政府宣布“国务院关于同意上海市调整部分行政区划的批复”，撤销闸北区、静安区设立新的静安区。2016年3月，原闸北区、静安区“撤二建一”工作完成，新的静安区成立，始成今之境域。

(四) 文明城区

静安区坚持以习近平新时代中国特色社会主义思想 and 习近平文化思想为指引，全面贯彻党的二十届三中全会精神，推进物质文明和精神文明协调发展，助力建设习近平文化思想最佳实践地。通过积极创建复评全国文明城市，培育和践行社会主义核心价值观，推动精神文明建设高质量发展。目前，静安区已连续五届获得“全国文明城市”光荣称号。

2025年，静安区精神文明工作将围绕“十四五”规划收官各项任务，以“美在静安 文明有范”为目标，积极助力赋能“文旅商体展”

等重点工作，统筹推动文明培育、文明实践、文明创建，不断提升城区品质，全力保障改善民生，持续提高城区文明程度和市民文明素养，为建设卓越的现代化国际静安提供强大精神动力。

（五）红色印记

静安是中国共产党早期活动的核心区域，是马克思主义传播地、革命领袖足迹地、首部党章诞生地、中共中央早期机关聚集地、党的统一战线政策提出地和群众运动策源地。作为中国革命斗争风起云涌之处，中国共产党早期许多重要活动在静安这片热土上开展，毛泽东、周恩来、邓小平、陈云等老一辈党的领导人和革命先烈都在这里工作、生活和战斗过，留下了弥足珍贵的红色印记。静安区红色资源底蕴深厚、数量众多、特色鲜明，辖区内现有重要红色资源旧址、遗址 106 处，数量上位居全市前列，它们是静安红色历史的见证者、是静安红色精神的承载者、是静安红色基因的传承者。

近年来，静安区深入实施“党的诞生地”红色文化传承弘扬工程，用好用活区域内丰富的红色文化资源，统筹发挥好爱国主义教育基地、党史教育基地、国防教育基地等阵地作用，现已建成开放一批重点红色场馆，并创建培育了 1 家全国爱国主义教育示范基地、9 家市级爱国主义教育基地、8 家市级党史教育基地、3 家市级国防教育基地。

中共二大会址纪念馆

中共二大会址纪念馆位于静安区老成都北路 7 弄 30 号（原上海市南成都路辅德里 625 号），纪念馆所在的联排式石库门旧式里弄建筑始建于 1915 年，次年竣工。两排两层砖木结构建筑，坐北朝南，为上海典型石库门式样建筑。早年为党的中央局宣传工作负责人李达的寓所，同时也是中国共产党第一个地下秘密出版机构——人民出版社的所在地。1922 年 7 月 16—23 日，中国共产党第二次全国代表大会在此召开，出席这次大会的有中央局成员、党的地方组织代表和参加远东会议后回国的部分代表，他们是陈独秀、张国焘、李达、杨明斋、罗章龙、王尽美、许白昊、蔡和森、谭平山、李震瀛、施存统等 12 人。

中共二大会址纪念馆于 2002 年建成并正式对外开放。2009 年被中宣部命名为“全国爱国主义教育示范基地”。2013 年二大会址被国务院公布为第七批“全国重点文物保护单位”。2021 年中国共产党一大·二大·四大纪念馆被文化和旅游部公布为国家 5A 级旅游景区。2024 年获评国家二级博物馆。纪念馆展区由“序厅”“基本陈列展厅”“党章学习厅”“专题展厅”以及“中共二大会议旧址”“平民女校旧址展厅”共六个展区组成，打造了一个兼具地域特色与文化内涵



的“石库门里的纪念馆”，真实再现中国共产党创建初期的峥嵘岁月。近年来先后推出“菜单式服务”“平民女校体验式参观”“系列巡展”等特色品牌宣教项目，不断拓宽党史宣教领域和辐射面。

地址：静安区老成都北路 7 弄 30 号

开放时间：周二至周日 9:00—16:30（16:00 停止入馆）（周一全天闭馆，节假日除外）

中共中央军委机关旧址纪念馆

中共中央军委机关旧址纪念馆位于静安区新闻路 613 弄 12 号（原新闻路经远里 1015 号），这是一幢始建于 1919 年的旧石库门里弄建筑，1962 年 9 月，被公布为上海市文物保护单位。中共中央军委（也称军事部）和相应机构，是中共中央领导军事工作的重要机关。同时，也见证了周恩来、杨殷、彭湃等革命元勋的光辉事迹。风雨经远里，军史丰碑地。中国共产党对军事斗争的早期实践与探索，淬砺了人民军队的忠勇品格，根植了人民武装的红色基因，为人民军队的发展壮大积累了宝贵经验，为毛泽东农村包围城市、武装夺取政权的理论奠定了坚实基础。

纪念馆于 2021 年 5 月 10 日，正式向社会开放。展厅面积 192 平方米，由“序厅”“中共中央军委的酝酿与成立”“在创建人民军队的伟大斗争中前进”“指导红军建设的历史功绩及经验教训”“早期中共中央军委历史沿革和人物简介”五个部分组成。通过图文、实物、视频、音频等多种形式讲述中央军委自成立至 1933 年 1 月离开上海



向苏区转移近 8 年间的历史变迁，再现了在党中央的领导下，革命前辈舍生忘死、浴血奋斗，对武装工农、举行起义、创建人民军队、指导红军建设等重大问题进行的艰辛曲折探索。

地址：静安区新闻路 613 弄 12 号

开放时间：周二至周日 9:00-16:30（16:00 停止入馆）（周一全天闭馆，节假日除外）

中共中央秘书处机关旧址纪念馆

静安区江宁路 673 弄（原戈登路文余里）10 号矗立的一幢一正两厢三开间旧式石库门里弄住宅，在 1927 至 1931 年间是中共中央秘书处的办公地之一。中共中央秘书处曾经是为党中央服务最直接，联系各方最广泛，保障中央工作最关键，在各机构运转中最核心的综合办事机构，具有特殊重要的地位和作用。

2020 年，中共中央秘书处机关旧址保护修缮工程启动，修缮以历史考证为本，遵循“修旧如旧、最小干预”的保护原则，最大程度恢复石库门建筑的历史原貌；2021 年 6 月，中共中央秘书处机关旧址以史料陈列展形式开放试运行；2023 年 6 月底建成纪念馆并对外开放。纪念馆分为广场雕塑区、旧址复原区、基本陈列展区等多个部分，布展总面积 505 平方米。纪念馆首次全方位、全过程、全景式展现了中共中央秘书处在上海的奋斗历程，展览分为“青云万里”“暗夜星光”“淬火成金”三大部分，讲述了无名英雄们身处逆境，机智勇敢、甘于奉献、忠于职守的光辉事迹，展现了党的秘书工作者“爱字爱字不爱名，求真求实不求荣，多思多谋不多怨，争苦争累不争功”的崇高精神风范。

地址：静安区江宁路 673 弄 10 号

开放时间：周二至周日 9:00-16:30（16:00 停止入馆）（周一全天闭馆，节假日除外）

中央特科机关旧址纪念馆

中央特科是中国共产党于 1927 年至 1935 年间在上海设立的情报保卫机构，由周恩来亲自筹建和实际负责，后经陈云、聂荣臻、陈赓、潘汉年等人的领导。党中央在上海期间，中央特科在隐蔽战线上开展了大量卓有成效的工作，在保卫中央机关和党组织的安全、开展对敌斗争、惩办叛徒、获取情报、发展通讯联络工作等方面功绩卓著，成为保卫党中央、服务党中央的“红色堡垒”，也为党的隐蔽战线在抗日战争和解放战争时期的发展奠定了良好基础。

中央特科机关旧址位于上海市静安区武定路 930 弄 14 号，该建筑为新式里弄住宅，高两层，顶部有阁楼，砖木混合结构，清水红砖砌筑。旧址于 2014 年 4 月被评为第八批上海市文物保护单位，2024 年 4 月建成纪念馆并开馆。中央特科机关旧址纪念馆展厅分为“序厅”“为党而生——中央特科成立”“屡建奇功——中央特科主要勋绩”“群英荟萃——中央特科著名人物”“中央特科主要勋绩专题展厅”“结束语”六个部分，系统介绍了中央特科的成立、发展、功绩和相关人物，谱写了隐蔽战线的不朽篇章。

地址：静安区武定路 930 弄 14 号

开放时间：周二至周日 9:00-16:30（16:00 停止入馆）（周一全天闭馆，节假日除外）

中国劳动组合书记部旧址陈列馆

1921 年 7 月 23 日，中国共产党第一次全国代表大会在上海开幕，宣告了中国共产党正式成立。党的一大提出，党在当前的中心任务是组织工人阶级，加强党对工人运动的领导。经过筹备，1921 年 8 月 11 日，党中央建立了公开领导工人运动的总机关——中国劳动组合书记部。

作为上海“红色之源”之一，中国劳动组合书记部旧址于 1959 年 5 月被列为市级文物保护单位。1992 年 9 月，恢复中国劳动组合书记部旧址，并建立了陈列馆向社会开放。2010 年 1 月，陈列馆被上海市人民政府命名为“上海市爱国主义教育基地”。整座展馆占地面积 276 平方米，全馆展区由“序厅”“光荣起点”“峥嵘岁月”“风起云涌”“奋斗圆梦”五个展区组成。整个展览通过丰富的史料，珍贵的历史影像，动态油画、连环画卷等艺术创作，场景还原和现代化虚拟技术，生动地展现中国劳动组合书记部在中国共产党领导下，从上海走向全国，向工人们宣传马列主义、帮助工人组织产业工会、

领导和支援工人运动的峥嵘岁月。

地址：静安区成都北路 893 弄 1-11 号

开放时间：周二至周日 9:00-12:00（11:30 停止入馆）13:00-16:30（16:00 停止入馆）

上海毛泽东旧居陈列馆

上海毛泽东旧居位于静安区茂名北路 120 弄 7 号（原慕尔鸣路甲秀里 318 号），是一幢石库门房子。1924 年 6 月，毛泽东偕夫人杨开慧、年幼的毛岸英、毛岸青以及岳母向振熙一同寓居于此，直至当年年底。毛泽东一生多次来到上海，甲秀里是他在上海居住时间最长的居所。在上海期间，毛泽东继续担任中共中央局秘书、负责组织部工作，协助陈独秀处理中共中央日常工作。同时，在国民党上海执行部身兼数职，为维护国共合作作出了重要贡献。

1977 年甲秀里被评为上海市文物保护单位，1999 年 12 月 26 日上海毛泽东旧居陈列馆向社会开放，现为上海市爱国主义教育基地、党史教育基地。全馆展区由“常设展览”“新中国成立后毛泽东来上海视察大事记”“实物展”和“旧居场景还原”四个部分组成，通过丰富的史料、珍贵的历史影像，生动展现了毛泽东在上海的革命经历以及伟人舍家为国的家国情怀。

地址：静安区茂名北路 120 弄 5-9 号

开放时间：周二至周日 9:00-12:00（11:30 停止入馆）13:00-16:30（16:00 停止入馆）

中共三大后中央局机关历史纪念馆

1923 年 6 月，中国共产党第三次全国代表大会在广州召开。9 月，中央局机关由广州迁址上海，设在当时上海火车站附近的香山路（今临山路）三曾里办公。中央局成员毛泽东、蔡和森和罗章龙等寓居于此。日军侵华时，三曾里被毁于“一·二八”淞沪抗战。2007 年 1 月，中共三大后中央局机关历史纪念馆在浙江北路 118 号建成对外开放，以此铭记这段历史。

纪念馆中心展区主题是“党史辉煌、永恒丰碑”，主要陈列中共三大后中央局成员在三曾里生活及工作的情况，展现老一辈革命家坚定信念、重纪律，为民族解放事业不懈奋斗的革命历程。分中心展区主题是“红色历史 永恒记忆”，主要陈列中国共产党领导上海人民进行一系列革命斗争的红色史料，展现了上海这座城市的光荣革命传统。

地址：静安区浙江北路 118 号

开放时间：周二至周日 9:00-12:00（11:30 停止入馆）13:00-16:30（16:00 停止入馆）



中共淞浦特委机关旧址陈列馆

中共淞浦特委是陈云、杭果人等老一辈无产阶级革命家 1928 年至 1929 年在上海开展革命斗争领导农民运动的机构。1987 年 11 月，中共淞浦特委办公地点旧址被上海市人民政府公布为市级文保单位。2007 年至 2010 年，因市政建设需要，经国家文物局批准从山海关路 387 弄 5 号整体迁移至山海关路 339 号。2012 年 7 月 1 日，静安在该址建立陈列馆向社会开放。

中共淞浦特委机关旧址陈列馆建筑面积约 410 平方米，主要通过图片、实物等史料，以及场景复原、木板拓画等，向参观者介绍中共淞浦特委组织机构及其领导下的奉贤庄行暴动、金山新街暴动等农民武装斗争。

地址：静安区山海关路 339 号

开放时间：周二至周日 9:00-12:00（11:30 停止入馆）13:00-16:30（16:00 停止入馆）

中共上海地下组织斗争史陈列馆暨刘长胜故居

中共上海地下组织斗争史陈列馆暨刘长胜故居是中共中央上海局的秘密机关旧址之一，也是刘长胜同志 1946 年至 1949 年在沪从事革命斗争时的居住地。解放战争时期，这幢建筑是中国共产党上海地方组织的指挥中心。这里的共产党人，曾经领导上海人民为争取和平与民主而不懈奋斗；在与中国人民解放军“里应外合，解放上海”的战役中，建立了不可磨灭的历史功勋。



2001年6月，这幢始建于1916年的建筑运用整体加固推移技术由西向东平移了118米。2004年5月27日，陈列馆正式向公众开放，该馆先后被命名为上海市爱国主义教育基地、上海党史教育基地。整个陈列馆建筑面积约为800平方米，共设有三层展览区，底层复原了文委筹建左联的地点公啡咖啡馆；二、三楼展区通过雕塑、场景展示、情景模拟、实物陈列等一系列表现手法，展示了1937年至1949年期间刘晓、刘长胜、张承宗等同志领导下的中共上海党组织发展、斗争的历程。

地址：静安区愚园路81号

开放时间：周二至周日 9:00-12:00（11:30 停止入馆）13:00-16:30（16:00 停止入馆）

1920年毛泽东旧居

安义路63号（原哈同路民厚南里29号）是毛泽东1920年来上海的居住地。这是一幢沿街的坐南朝北砖木结构的两层楼房，楼下是客堂间，放着一张方桌和几把椅子，用来会客和吃饭。楼上，亭子间是卧室，毛泽东从1920年5月5日抵沪至7月初离沪，一直居住在这里。

毛泽东居住在这里期间，开展了驱逐湖南军阀张敬尧的斗争，探讨湖南的改造问题，先后在《申报》上发表了《湖南改造促成会发起宣言》《湖南人民的自决》《湖南建设问题的商榷》等6篇文章；参加了“半淞园会议”，讨论新民学会的会务问题，欢送湖南青年赴法勤工俭学；最具意义的是多次拜访了正在创建中国共产党的陈独秀，与其探讨马克思主义。后来毛泽东在同斯诺谈话时回忆说：“到了1920年夏天，在理论上，我已成为马克思主义者了”，正是在安义路居住



的这段时间，毛泽东最终选定了人生之路，完成了由激进民主主义者向马克思主义者的转变，因此，这里是记录了一代伟人毛泽东革命生涯中一段重要历程的旧居。

1959年，这里被上海市文物管理委员会命名为上海市文物保护单位。

2018年，被定为“上海市民终身学习人文行走”学习点。

地址：静安区安义路63号

开放时间：周二至周日 9:00-11:30 13:00-16:30

上海总工会遗址、上海工人第三次武装起义指挥部遗址——湖州会馆

湖州会馆始建于1900年，由浙江湖州人集资兴建，占地约1.3万平方米。在上海工人第三次武装起义前，湖州会馆为北洋军阀盘踞。1927年3月至4月，这里成为上海工人第三次武装起义指挥部和上海总工会总会所。湖州会馆的大部分建筑已在1932年“一·二八”事变中毁于日军炮火。

1927年3月21日，上海工人第三次武装起义爆发。3月23日，工人纠察队攻克了湖州会馆后，上海总工会即以会馆作为工会会所，并于3月24日正式公开办公。3月25日，赵世炎以工人纠察队指挥的名义，在会馆召开记者招待会。3月27日，上海工人代表大会在会馆召开，汪寿华向大会报告了第三次武装起义的情况和上海总工会今后的工作。3月29日，在中国共产党推动下，建立起上海特别市临时市政府，其中有罗亦农等共产党员和共青团员10人。这是在党的领导下，最早由民众在大城市建立起来的革命政权。



湖州会馆——上海总工会遗址、上海工人第三次武装起义指挥部遗址是“上海百年红色工运资源发掘宣传工程”的重点工程之一，在上海市总工会、中共静安区委的领导下，2020年，静安区总工会、宝山路街道党工委共同启动对遗址重新布展工作，本着“尊重历史、还原历史”的原则，修缮制作了湖州会馆门头、室内空间，收集整理相关历史资料，通过多媒体展陈和12幅铜版画展示历史场景。2021年6月重新对外开放。

地址：静安区中兴路828号（近西藏北路口）

开放时间：每周二至周日 9:00-16:00（周一全天闭馆；如有调整，另行公告）

穿越历史的红色电波——中国共产党无线电密码通信工作诞生地历史陈列展

穿越历史的红色电波——中国共产党无线电密码通信工作诞生地历史陈列展位于上海市静安区延安西路396-2号（美丽园大酒店一楼西侧），建筑面积333.19平方米，布展面积约210平方米。展览分为“红色呼唤”“通信革命”“传令四方”“群英荟萃”四个部分，详述了党创建无线电密码通信工作的历史背景、党的无线电密码通信工作的早期实践和历史贡献、党的无线电密码通信工作功勋人物。展览共有实物50余件，包括珍贵手稿、信件、文献、各类物品等；视频20余部，包括

裸眼3D影片《无声的功勋》，纪录片《穿越历史的红色电波》，珍贵影像资料和革命后代采访视频等；还有多处艺术场景和互动体验，图文并茂，集中呈现了党的通信史上四个第一——党的第一座无线电台诞生地、党的第一次远距离无线电密码通信实现地、党的第一套（批）无线电通信密码创编地、党的第一批无线电通信与机要人才自主培训地。

1929年秋，在周恩来的直接领导下，中国共产党第一座无线电台在大西路福康里9号（今静安区延安西路396号附近）布设，李强负责机务，张沈川负责报务。年底，李强等到香港布设分台。1930年1月初，上海台和香港台实现了第一次远距离无线电密码通信，标志着中国共产党无线电密码通信工作正式诞生。党的无线电密码通信工作，从无到有，从有到大，成为加强党中央集中统一领导的“空中桥梁”、保护壮大革命力量的“高效手段”、指挥革命战争的“重要工具”、党和红军无线电密码通信工作的“人才种子”、党和人民军队的“特殊命门”，为中共中央领导和中央军委指挥的及时性、针对性、安全性和有效性提供了重要保障。为党中央团结带领全党全军全国各族人民，夺取新民主主义革命的最后胜利提供了制胜手段。为党、人民军队和新中国的信息通信事业作出了开创性、奠基性和历史性的贡献。

地址：静安区延安西路396-2号（美丽园大酒店一楼西侧）

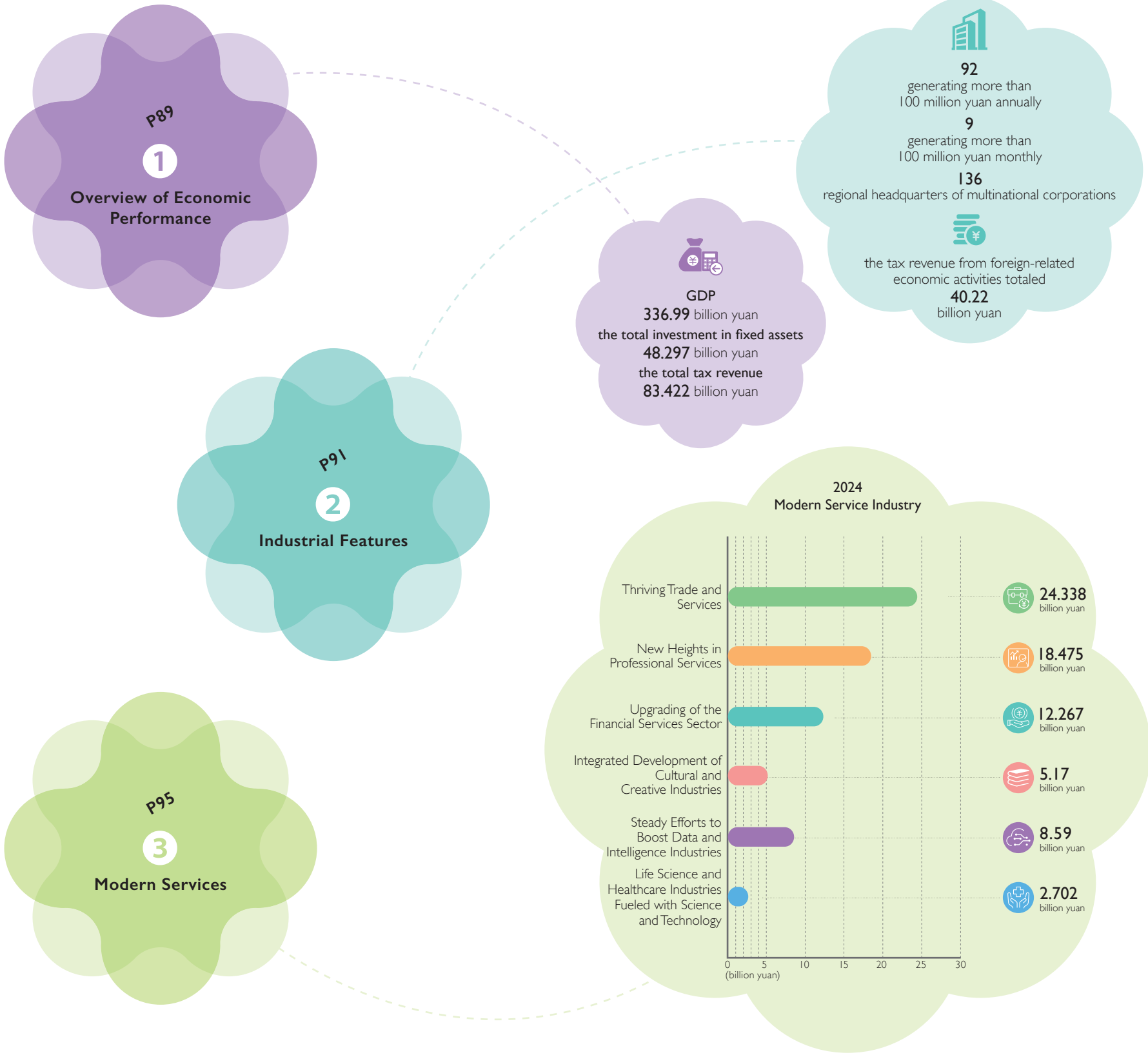
开放时间：每周二至周日 9:00-16:30

（16:00停止入场；每周一闭展，节假日另行公告）



Economic Development





I. Overview of Economic Performance

In 2024, the GDP of Jing'an District was 336.99 billion yuan; the revenue from the general public budget was 30.222 billion yuan, a year-on-year increase of 5.01%; the total investment in fixed assets was 48.297 billion yuan, a year-on-year increase of 10%; the total tax revenue was 83.422 billion yuan; the tax revenue from the tertiary industry, with the modern services sector accounting for a significant portion, amounted to 79.939 billion yuan, representing 95.8% of the total tax revenue.





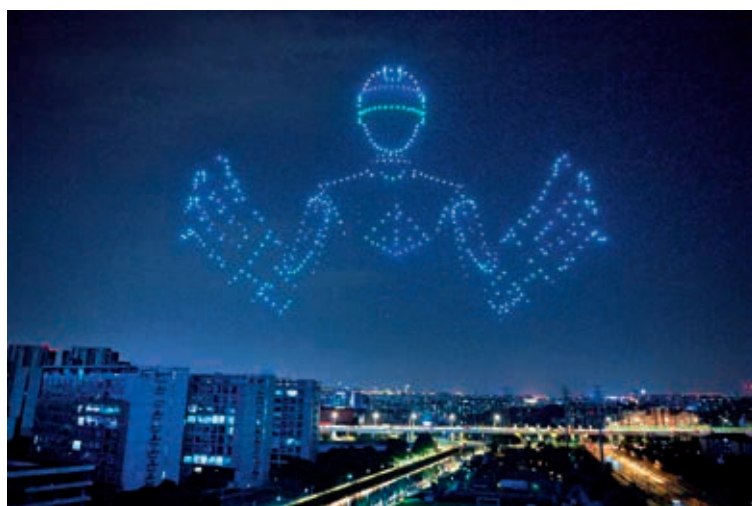
2. Industrial Features

Jing'an District is home to the West Nanjing Road business district, a top-tier CBD in Shanghai, and Shibei High-Tech Park, a model for downtown park transformation. It also features municipal-level commercial hubs along West Nanjing Road, Daning Road and Suhe Bay, as well as the district-level Caojiadu commercial area. The District boasts a comprehensive service economy industrial chain, a distinct north-south gradient, diverse business types, and a full spectrum of





industries. Its three hallmark features, headquarters economy, building economy and open economy, has made the District a hub of global resources. There are 103 global service providers in Jing'an. The District is also home to numerous high-end business and commercial buildings such as Hang Lung Plaza, Park Place, Kerry Center, Wheelock Square, CITIC Pacific Plaza, JC Mandarin, Joy City, and One Museum Place. In 2024,



these buildings contributed 73.9% of the District's tax revenue, with 92 generating more than 100 million yuan annually and 9 generating more than 100 million yuan monthly. The District has attracted 136 regional headquarters of multinational corporations. In 2024, the tax revenue from foreign-related economic activities totaled 40.22 billion yuan, accounting for 48.2% of the District's total.



3. Modern Services

Thriving Trade and Services

The area along West Nanjing Road is home to over 2,000 renowned domestic and international brands, with more than 70% being globally recognized, and a global luxury brand coverage exceeding 90%. The area has become a prime destination for global product launches. Highlights include the “Blooming Shanghai: West Nanjing Road Billion-Yuan Business District Global Product Launch” series, Starbucks Reserve Roastery’s nationwide debut of new products, and the first shows in Asia and China by LVMH and Kering. Efforts have been made to promote the digital, green, and health-focused, and *guochao* (trendy Chinese-made consumer goods) consumption, creating a favorable environment for the rapid growth of emerging brands and the rejuvenation of traditional brands. A dedicated bonded warehouse has been established at Zhangyuan, and the Jing’an High-Quality Product Import Demonstration Zone has been officially inaugurated, accompanied by the release of new industrial policies. In 2024, the trade and services sector generated 24.338 billion yuan in tax revenue.



New Heights in Professional Services

Jing'an District has leveraged the role of Shanghai as a human resource service export base to help enterprises' global expansion with human resource services. High-level industry sharing activities are consistently organized, and human resource service agencies are guided to help enterprises in the Yangtze River Delta and the Yangtze River Economic Belt expand new markets. A total of 39 human resource service agencies in Jing'an have been recognized as part of the latest batch of Shanghai's high-quality human resources service providers, ranking first in the city. The newly established Jing'an Branch of the Shanghai Intellectual Property Protection Center, among other duties, conducts patent pre-examination to facilitate the rapid commercialization of innovative achievements. In 2024, the professional services sector generated 18.475 billion yuan in tax revenue.

Upgrading of the Financial Services Sector

Jing'an District continues to attract global asset management institutions, licensed financial institutions, equity investment institutions, and fintech enterprises, steadily enriching the supply of financial products and services. The District has been approved as one of Shanghai's first equity investment clusters. It is home to over 500 financial market entities, including all of the top 10 private equity firms from the PEI 300 ranking that have presence in China. The district hosted the Global Asset



Management Forum: 2024 Shanghai Suhewan Conference, an international and professional communication platform, which has enhanced its financial influence. The newly established Jing'an Inclusive Financial Advisory Office provides tailored, comprehensive financial services for small and medium-sized enterprises. A tiered and phased listing support service system has also been developed. In 2024, the financial services sector generated 12.267 billion yuan in tax revenue.

Integrated Development of Cultural and Creative Industries

Jing'an District is active in communicating municipal policies on cultural and creative industries to the public. Fourteen projects of the District have received support from the special municipal fund for these areas, with the approval rate ranking first citywide for two consecutive years. The district has expanded its VR panoramic tourist maps and launched over 30 micro-tour routes, including the Suhe River North Bank Fashion and Art Route, the Suhe River South Bank Family Fun Route and the Julu-Fumin-Changle Tour. Efforts have been made to enhance the functional integration of the bases for film and television, E-sports, AI and ultra-HD audiovisual industries and boost the development of the digital cultural and entertainment industries. Support was provided for events such as the China Game Innovation Award, enhancing international exchange and





collaboration in the e-sports industry. In 2024, the cultural and creative industries generated of 5.17 billion yuan in tax revenue.

Steady Efforts to Boost Data and Intelligence Industries

Jing'an District has accelerated its development of the blockchain industry by attracting high-level institutions to the Blockchain Valley, including National Blockchain (Shanghai) Innovation Center, Shanghai Data Governance Institute, and Pujiang Digital Chain, and hosting China's first blockchain-themed marketplace. Efforts are made to develop the ultra-HD audiovisual industry and establish Shanghai's Ultra-HD audiovisual industry cluster. The District has advanced the construction of the core zone for technological service enterprises in the Suhe Bay region and developed an exchange platform for enterprises. The National Digital Economy Industry and Technology Innovation Strategic Alliance has been established in Jing'an. In 2024, the data and intelligence industries generated 8.59 billion yuan in tax revenue.

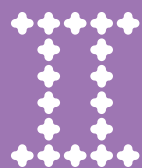
Life Science and Healthcare Industries Fueled with Science and Technology

Jing'an District has collaborated with the Shanghai Center of Biomedicine Development to advance the development of the smart healthcare industry, hosting various forums and



events focused on industrial innovation to unlock the potential for technological innovation in biomedicine. The District has completed the "Research on Development of Digital Life Science and Healthcare Industries in the Urban Planning Transformation Zone of Zoumatang." A series of events were organized for biomedicine enterprises in collaboration with the SUHEONE Entrepreneurs Alliance, improving the platform of financial services to support the growth of these enterprises. In partnership with AstraZeneca, the District has established the Shanghai International Life Science Innovation Campus, iCampus. In 2024, the life science and healthcare industries generated 2.702 billion yuan in tax revenue.





经济发展



(一) 经济总量 103
(二) 产业特色 103
(三) 现代服务业 104



(一) 经济总量

2024 年，全区实现地区生产总值 3369.9 亿元；完成区级一般公共预算收入 302.22 亿元，比上年增长 5.01%。2024 年实现全社会固定资产投资 482.97 亿元，比上年增长 10%。完成税收总收入 834.22 亿元；以现代服务业为主体的第三产业实现税收 799.39 亿元，占税收总额的比重 95.8%。

(二) 产业特色

区域汇聚了上海市能级最高的中央商务区之一——南京西路街区以及上海市中心城区园区转型的成功案例——市北高新园区；集中了南京西路、大宁和苏河湾三大市级商圈以及曹家渡区级商业中心。服务经济产业链完整，南北梯度明显，产业业态丰富、产业门类齐全。总部经济、楼宇经济、开放经济“三张金名片”，让静安成为全球资源汇聚的“强磁场”，全球服务机构数达到 103 家。区域内汇集了恒隆广场、越洋广场、嘉里中心、会德丰广场、中信泰富、锦沧文华、大悦城、博华广场等众多高端商业商务楼宇。2024 年全区楼宇税收占全区税收比重 73.9%，年税收超亿元楼宇 92 幢，月均税收超亿元的楼宇 9 幢。静安目前已集聚跨国公司地区总部合计 136 家。2024 年，全区涉外经济实现税收 402.2 亿元，占全区税收比重 48.2%。

（三）现代服务业

商贸服务业蓬勃发展

区内南京西路沿线汇集了 2000 多个国内外知名品牌，其中 70% 以上是国际知名品牌，全球奢侈品牌覆盖率超过 90%。全球新品首发纷至沓来，组织“Blooming 上海·南京西路千亿商圈全球新品首发开‘新’购”系列活动；星巴克烘焙工坊举办新品系列全国首发；路威酩轩、开云集团先后开展亚洲首秀、中国首展。大力发展数字消费、绿色消费、健康消费、国货“潮品”等，营造新兴品牌快速成长、传统品牌焕新升级的良好局面。建成张园专用型保税仓。静安优质产品进口示范区正式揭牌，发布新一轮产业政策。2024 年，商贸服务业实现税收 243.38 亿元。

专业服务业做强特色

发挥中国上海人力资源服务出口基地作用，开展人力资源服务“千帆出海活动”。持续开展“梅园论剑”行业高端分享活动，组织人力资源服务机构走进长三角、长江经济带，帮助企业开拓新市场。39 家静安人力资源服务机构获评新一批上海优质人力资源服务机构称号，数量位列全市第一。上海市知识产权保护中心静安分中心挂牌成立，承接专利预审职能，推动实现创新成果的快速转化。2024 年，专业服务业实现税收 184.75 亿元。

金融服务业提升能级

持续引入全球资管机构、持牌金融机构、股权投资机构以及金融科技企业，不断丰富金融产品与服务供给。静安区获批成为全市首批股权投资集聚区，全区金融市场主体超过 500 家，PEI300 全球私募基金榜单前 10 名中已进入中国的都落户在静安。举办“全球财富管理论坛·2024 上海苏河湾大会”，搭建国际化、专业化沟通平台，提升静安金融影响力。成立静安区普惠金融顾问咨询室，为中小企业提供特色化的综合金融服务。打造分层次、分梯度上市培育服务体系。2024 年，金融服务业实现税收 122.67 亿元。

文化创意产业融合发展

做好市文创政策宣传推介活动，14 个项目获得市文创专项资金支持，通过率连续两年位居全市第一。扩大 VR 全景旅游地图覆盖面，推出苏河北岸时尚文艺线路、苏河南岸欢乐亲子线路、乐游巨富长等



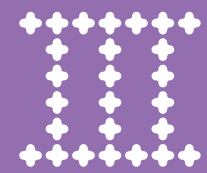
城市微旅游线路 30 余条。强化“影视+电竞+AI+超高清视听基地”的功能融合，推动数字文娱产业发展。支持举办中国游戏创新大赛等赛事活动，加强电竞产业的国际交流与合作。2024 年，文化创意产业实现税收 51.7 亿元。

数据智能产业持续发力

加快布局“区块链”产业赛道，引进国家区块链（上海）创新中心、上海数据治理研究院、浦江数链等高能级机构在“数通链谷”挂牌运作，开设全国首个区块链主题场景集市。全力谋划布局超高清视听产业，着力打造“视听静界”上海超高清视听产业集聚区。推动苏河湾科技服务业核心区建设，搭建“静创苏河——企业家资源荟品牌交流平台”。国家数字经济产业技术创新战略联盟在静安成立。2024 年，数据智能产业实现税收 85.9 亿元。

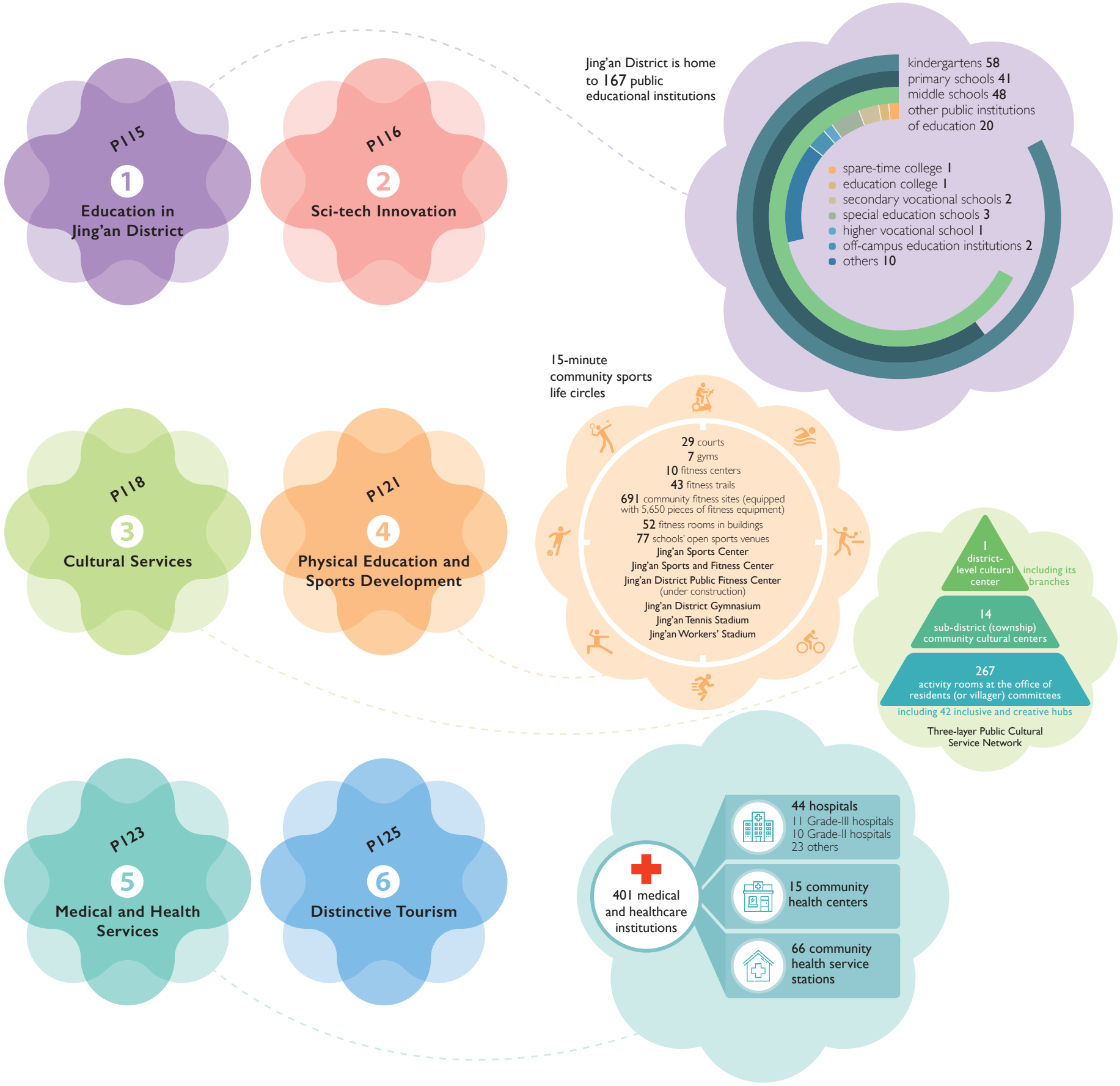
生命健康产业科技赋能

携手上海市生物医药科技产业促进中心推动智慧健康产业发展，举办各类产业创新发展论坛活动，激发生物医药科技创新潜力。完成《走马塘城市规划转型区数字生命健康产业发展研究》。举办“融无限创未来”静安区生物医药产业系列活动暨苏河湾企业家联盟活动，为生物医药企业发展搭建更优质金融服务平台。与阿斯利康共同建设上海国际生命科学创新园 iCampus。2024 年，生命健康产业实现税收 27.02 亿元。



Social Programs





I. Education in Jing'an District

Jing'an District is home to 167 public educational institutions, including 48 middle schools (including K-9 schools), 41 primary schools, 58 kindergartens, and 20 other public institutions of education (including a spare-time college, a higher vocational school, two secondary vocational schools, three special education schools, an education college, two off-campus education institutions, and 10 others). The District features seven municipal experimental and demonstration senior high schools, one municipal characteristic ordinary high school, and 12 municipal demonstration kindergartens. For compulsory education, the District comprises one school district, 14 education groups, and has 11 schools that are recognized as the city's new, high-quality schools. With over 12,000 teaching staff and more than 100,000 students, Jing'an has established a strong reputation nationwide with educational brands such





as Success Education, Tea House Education, Happy Education, Creative Education, Low-Structure Activity Exploration, Game-Based Education, and Community Education. The District has achieved notable recognition, including nine First Prizes of National Teaching Achievement in Basic Education and 11 Second Prizes of National Teaching Achievement in Basic Education, three municipal model teachers, 112 senior-title teachers in primary and secondary schools, and over 10 “Outstanding Teachers with Four Qualities of Shanghai” (including nominees). Jing’an has earned numerous national honors, such as National Advanced District in Childhood Education, National Advanced District in Basic Knowledge and Skills Education, National Advanced District in Special Education, National Model District in Community Education, National Experimental District for Activity Curriculum Teaching, National Experimental District for Information Technology Education, and National Demonstration Zone for Promoting and Applying Excellent Teaching Achievements in Basic Education. By nurturing educational brands, ensuring balanced and quality education, and fostering a healthy educational ecosystem, Jing’an is committed to creating a pioneering area for high-level educational modernization that reflects both contemporary and district-specific characteristics, establishing itself as a region of excellent education with significant influence.

2. Sci-tech Innovation

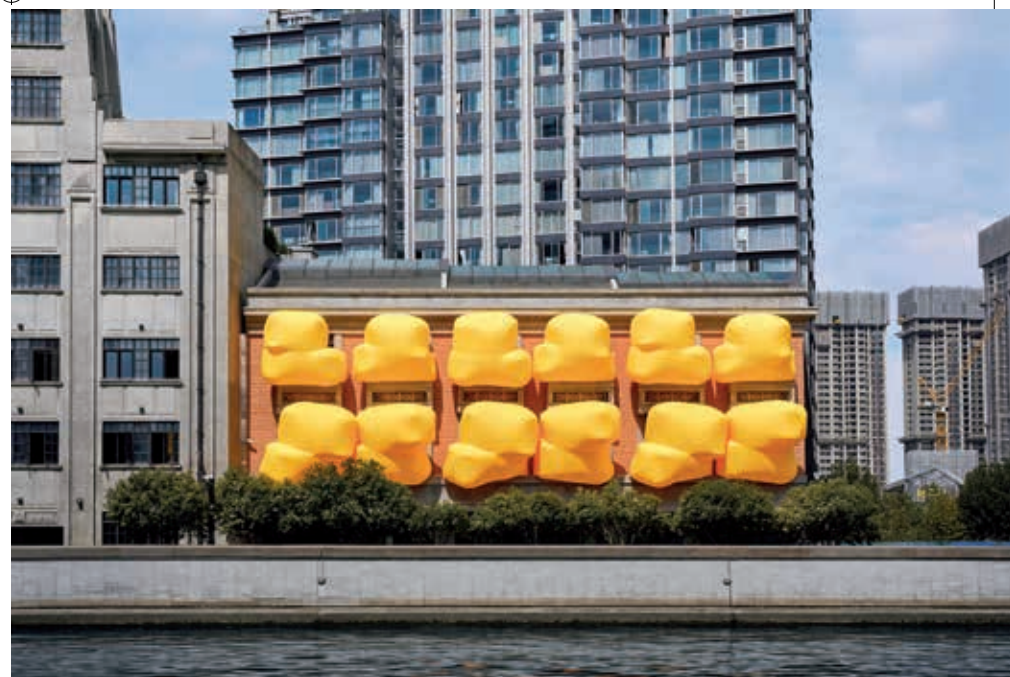
Jing’an District remains committed to innovation-driven development. Focusing on the central tasks of the CPC Jing’an District Committee and the Jing’an District People’s



Government and the city’s goal of developing into a center of sci-tech innovation, Jing’an District has accelerated its efforts to develop new quality productive forces. Aiming at the integrated development of cloud computing, big data, AI and blockchain (CBAB) industries, the District has focused on cutting-edge technologies and future industries and made great efforts to promote emerging sectors such as blockchain and ultra-HD audio and visual industries. Efforts have been made to advance the development of the Blockchain Valley, a national blockchain demonstration zone in Shibei Hi-tech Park, give full play to the distinctive advantage of Shibei and Daning in the integrated development of the CBAB industries, cultural and creative industries and demonstrative application, and create a cluster of ultra-HD audio and visual enterprises. Jing’an District fosters high-level innovators, mainly targeting chain-leading enterprises and hard-tech companies to boost its digital industry cluster. It has established high-impact innovation platforms, including a national software and information service demonstration base, a national big data industry demonstration base, and Shanghai sci-tech service development demonstration zone. The District has taken measures to attract top-tier scientific researchers, building a scientific talent pool comprising academician and expert workstations, foreign experts and professionals, industrial innovators and entrepreneurs. Jing’an has developed a multi-layered, comprehensive innovation ecosystem and created international, specialized, and digital innovation platforms and facilities. It has built a robust innovation infrastructure centered on makerspaces, technology enterprise incubators, and sci-tech parks, providing a Shanghai Solution and Jing’an Model for global innovation and entrepreneurship.

3. Cultural Services

With the objective of pioneering the building of a modern system of public cultural services, Jing'an has continued to deepen the building of "Beauty in Jing'an" themed public cultural circle, consolidate the results of the National Public Cultural Service System Demonstration Program and Shanghai Public Cultural Service System Demonstration Zone, optimize the distribution of urban cultural facilities, innovate the public cultural service mechanism, and create a Jing'an Model for high-quality development of modern public cultural services. 15-minute public cultural circles have emerged in the District. In addition to improving the Three-layer Network of Public Cultural Services comprising one district-level cultural center (including its branches), 14 sub-district (township) community cultural centers, and 267 activity rooms at the office of residents committees (including 43 inclusive and creative hubs), Jing'an District has also expanded the supply of public cultural services and improved the mechanisms for government service procurement and distribution of public cultural products and services. Jing'an District is the first to use blockchain technology in distribution of cultural products and services via a mini program. Through its culture distribution project, Jing'an has integrated a broader range of cultural resources with greater diversity and quality, such as professional troupes, social institutions, cultural celebrities, volunteer services, and various public spaces. This initiative has established innovative distribution models characterized by sharing, connectivity,



collaboration and joint ownership between various public spaces and superior cultural resources. It has also created a two-way platform for cultural resource distribution with full coverage and seamless connectivity, providing residents with more quality public cultural services and ensuring efficient last-mile delivery.

The Smart Cultural Service Platform of Jing'an District has been recognized as a National Public Cultural Service System Outstanding Demonstration Project. The Jing'an District Culture Center is one of China's first centers for promoting drama among children and adolescents, the only such center in Shanghai. Shanghai Jing'an Modern Drama Valley has been recognized as one of Shanghai's Top Ten Cultural Brand Events





and the JZ SPRING has been recognized as one of Shanghai's Top Ten Signature Cultural Events. The immersive dramas *Sleep No More* and *ERA Journey through Time and Space* were included in the national catalog of outstanding tourism and performance projects. The Art Ripples was named 2024 National Model Case for Public Cultural Brand.

4. Physical Education and Sports Development

Jing'an District has implemented the *Regulations of Shanghai Municipality on Sports Development*. Focusing on the creation of 15-minute community sports life circles, the District has accelerated the efforts to promote recreational sports, enhance its core competitiveness in competitive sports, create distinctive sports event brands, and expand public access to sports facilities. The District has developed a comprehensive system of public sports facilities, including 29 courts, 7 gyms, 10 fitness centers, 43 fitness trails, 691 community fitness sites (equipped with 5,650 pieces of fitness equipment), 52 fitness rooms in buildings, open sports venues at 77 schools, and public sports venues, including the Jing'an Sports Center, the Jing'an Sports and Fitness Center, the Jing'an District Public Fitness Center (under construction), the Jing'an District Gymnasium, the Jing'an Tennis Stadium, and the Jing'an Workers' Stadium. Public sports services via the "Jing'an Sports" App, "Door-to-Door Delivery" and the management model of "Shared



Courts” form the “Smart Sports” service platform, which provides residents with access to sports venues, fitness guidance, sports equipment, sports events, fitness tests, etc. There are 2,965 social sports instructors and 281 volunteers responsible for the maintenance of public fitness equipment across the communities, parks, and buildings in the District. Adhering to the principle of “sports and competitions for all,” the District has refined its three-tier sports event system by hosting diverse recreational sports events, such as the “Sports for Excellence” Jing’an Talents’ Challenge, Sports Square Weekly Competitions, community sports day, Jing’an Fencing Competition, Jing’an Go Competition, and Jing’an Karate Championship. Jing’an has also hosted various domestic and international events, including the FIE Foil Grand Prix (Shanghai), Head of Shanghai River Regatta, Shanghai Marathon, Shanghai Jing’an Half Marathon, and part of the events of the Fourth Shanghai Citizen Games, with increasing influence of these events. More than 40 training programs are available for juveniles in sports such as volleyball, football, fencing, track and field, swimming, gymnastics, badminton, and martial arts. There are 5,299 registered young athletes in the District. Furthermore, 86 primary and middle schools provide 27 different sports courses.

5. Medical and Health Services

Jing’an District currently has 401 medical and healthcare institutions, including 44 hospitals (11 Grade-III hospitals, 10 Grade-II hospitals, and 23 others), 15 community health service centers, and 66 community health service stations. Relying on renowned Grade-IIIA hospitals such as Huashan Hospital, Huadong Hospital, Shanghai Tenth People’s Hospital, Shanghai First Maternity and Infant Hospital, and Shanghai Municipal Hospital of Traditional Chinese Medicine, the District continues to advance the development of medical consortiums. Public health institutions have achieved high-quality development, actively exploring models and pathways for high-quality development of regional medical centers, gradually developing a structured and efficient healthcare system and a continuous and systematic diagnosis and treatment system, strengthening professional medical services close to residents. Community health services have been enhanced, with efforts focused on advancing the standardization of community health service centers, establishing inpatient beds in select centers,

promoting traditional Chinese medicine services, and expanding rehabilitation, nursing, and health management centers. The public health system has been further improved, with strengthened capabilities in emergency response, service delivery, coordination, and support. Efforts have been accelerated to build a disease prevention and control system integrating prevention and treatment, aligning hospitals with disease prevention and control institutions, and fostering collaboration across society. Jing'an District is fostering a comprehensive health-focused environment, adhering to the principle of prioritizing public health. Efforts have been made to strengthen interdepartmental collaboration, enhance healthcare services, promote healthy lifestyles, improve health-related environment, and raise overall health standards so as to fully implement the Healthy Shanghai Action Plan. The functionality of the Healthy Jing'an Internet+Healthcare platform continues to improve. Efforts have been made to advance the digital transformation of healthcare under the Convenient Medical Services 3.0 initiative, promote the co-development and sharing of health data of registered residents, and establish integrated regional standards for community internet hospitals. These efforts aim to provide residents with a convenient, fully digital healthcare experience, developing Jing'an into a health-focused district characterized by digital health services.

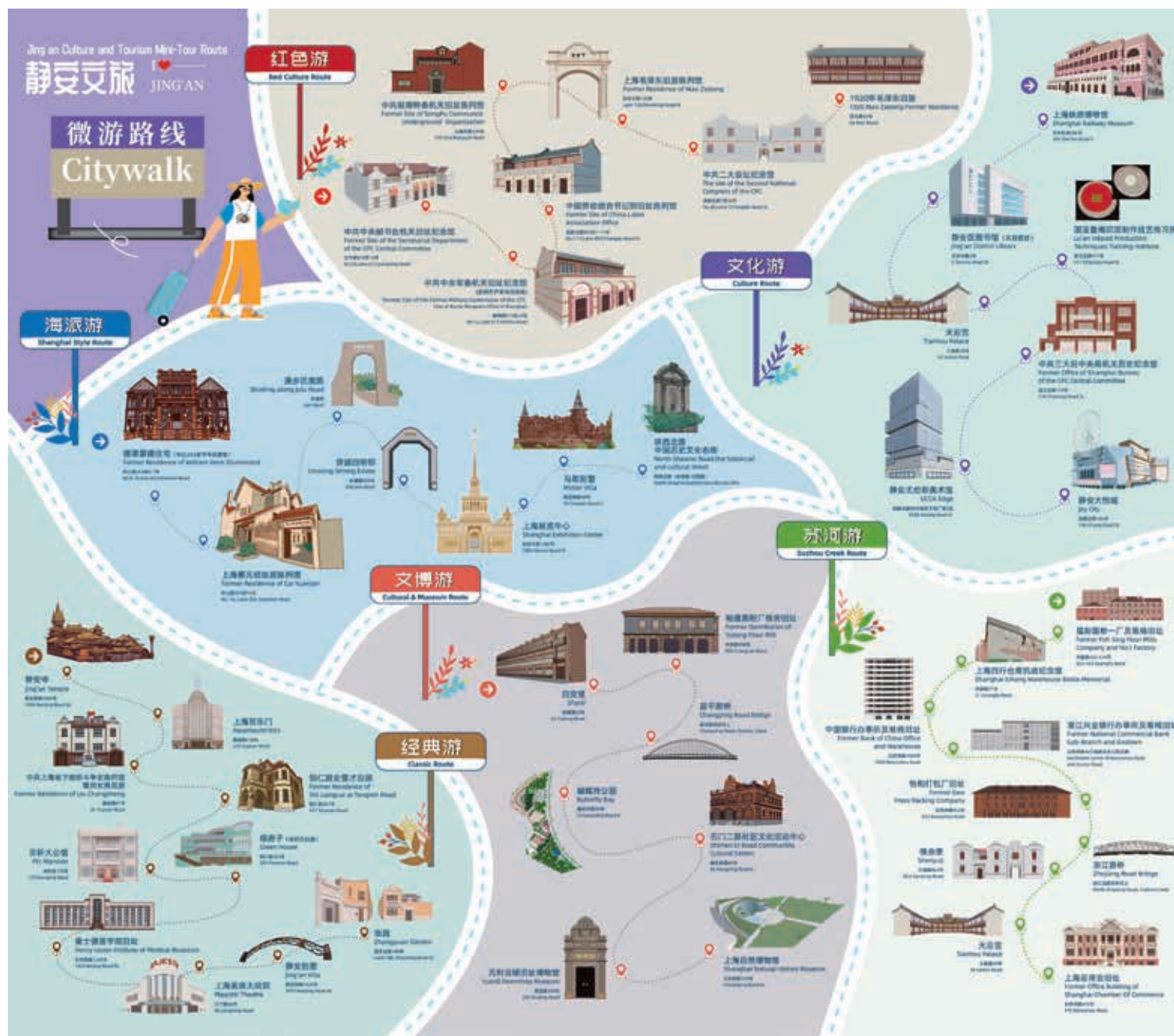


6. Distinctive Tourism

In terms of tourism, Jing'an District aims to establish itself as the "first destination" for foreign tourists arriving in Shanghai. By promoting the integration of culture, tourism, commerce, sports, and exhibitions and creating innovative tourism experiences, it seeks to unlock new potential for cultural and tourism consumption and boost consumption in the District. With its rich historical heritage, beautiful surrounding, thriving commerce, dynamic innovation, and easy access to information, Jing'an has attracted renowned enterprises from China and abroad and international business events, as well as visitors from around the world, serving as a vital gateway for Shanghai's international exchange. As of December 2024, Jing'an District hosted 268 commercial cultural and entertainment venues. These include 19 cinemas and theaters, 281 tourism enterprises and institutions, 17 star-rated hotels (including 5 five-star hotels, 10 four-star hotels, and 2 three-star hotels), 161 domestic travel agencies, 53 international travel agencies, 50 branches of travel agencies, one AAAAAA tourist attraction (Memorial for the Site of the Second CPC National Congress), and two AAA tourist attractions (Shanghai Sihang Warehouse Battle Memorial and Daning Park).

Tour Routes

Jing'an Red Footprints: Memorial for the Former Site of the General Secretariat of the CPC Central Committee, Memorial for the Former Site of the CPC Central Military Commission, Exhibition Hall of the Former Site of Secretariat of China Labor



Association, Exhibition Hall of the Former Site of the CPC Songpu Special Committee Office, Former Residence of Mao Zedong in Shanghai, Memorial for the Site of the Second CPC National Congress, Site of Mao Zedong's Residence in 1920 / Jing'an District Tourist Service Center

Jing'an Haipai Route: Former Residence of William Venn Drummond (Huashan 263 Time-honored Brand Hall), Former Residence of Cai Yuanpei, Julu Road, Siming Estate, Shanghai Exhibition Center, Moller Villa, North Shaanxi Road (a famous historical and cultural street)

Jing'an Herigate Architectures: Jing'an Temple, Paramount 1933, CPC Shanghai Underground Struggle Exhibition Hall and Former Residence of Liu Changsheng, Former Residence of Shi Liangcai at Tongren Road, PEI Mansion, Green House, Henry Lester Institute of Medical Research, Majestic Theater, Jing'an Villa, Zhangyuan Garden

Jing'an Suhe Bay Route: Former Foh Sing Flour Mills Company No.1 Factory and Warehouse—Shanghai Sihang Warehouse Battle Memorial, Former Bank of China Office and Warehouse, Former National Commercial Bank Sub-Branch and Warehouse, Former Ewo Press Packing Company, Zhejiang Road Bridge, Shenyuli, Tianhou Palace, Former Site of Shanghai General Chamber of Commerce

Jing'an Cultural Relics: Si'anli, Former Dormitories of Yutong Flour Mill, Changping Road Bridge, Butterfly Bay Park, Shimen Road No. 2 Community Culture Center, Yuanli Pawnshop Museum, Shanghai Natural History Museum

Jing'an Cultural Sites: Shanghai Railway Museum, Jing'an District Library (Tianmu Road Branch), Lu'an Inkpaid Production Techniques Training institute, Tianhou Palace, Memorial for the Office of CPC Central Bureau after the Third CPC National Congress, UCCA Edge, Joy City

Jing'an Temple: Located at No. 1686 West Nanjing Road in Jing'an District, Jing'an Temple is an ancient landmark in southern China. Since the Yuan and Ming dynasties, it has been well known as a place of interest in Shanghai with its unique blend of Buddhism and folk traditions. The temple's three grand structures—Mahavira Hall, Hall of Heavenly Kings, and Hall of the Three Saints—feature architectural styles reminiscent of the pre-Ming Dynasty era. Historically, Jing'an Temple was celebrated for its "Eight Sights," including the Chiwu Stone Tablet from the Three Kingdoms period, the cypress planted during the Chen Dynasty (557-589), the Shrimp Pond associated with an anecdote of the eminent monk Zhiyan, the Lecture Rostrum built by Zhong Yi in the Southern Song Dynasty, the gurgling Fountain of Feijingbang, poet and monk Shou Ning's room called Green Cloud Cave, the ancient Luzi Ferry at the Wusong River, and the Hudu Fort used for defense against pirates during the Eastern Jin Dynasty. The temple also houses notable cultural treasures, including paintings by Zhu Da and Wen Zhengming's cursive calligraphy work, *Song of Pipa*.

Address: No. 1686, West Nanjing Road



Opening Hours: April-October: 7:30-18:30 Monday to Sunday (Last admission at 18:00); November-March: 7:30-17:30 Monday to Sunday (Last admission at 17:00)

Memorial for the Site of the Second CPC National Congress: The memorial is located at No. 30 Lane 7, North Laochengdu Road, with a building area of 2,282 m². The memorial consists of "Preface," "Basic Exhibition," "History of the Party Constitution," "Themed Exhibition," "Former Site of the Second CPC National Congress" and "Former Site of Girls' School." The exhibition features a dignified style and meticulously curated arrangements, presenting visitors with a memorial in Shikumen that embodies both local characteristics and cultural significance, authentically recreating the early history of the CPC. In recent years, the memorial has introduced distinctive exhibition services and programs such as menu-style service, Girls' School Immersive Tours, and traveling exhibitions, continuously expanding the scope and influence of Party history communication and education.

Address: No. 30 Lane 7, North Laochengdu Road, Jing'an District

Opening Hours: 9:00-16:30 Tuesday to Sunday (Last admission at 16:00) (Closed on Mondays, except public holidays)

Shanghai Sihang Warehouse Battle Memorial: Located at No. 1 Guangfu Road, west of the original Sihang Warehouse (the Sihang Trust Department Shanghai Branch Warehouse), the memorial spans approximately 3,800 m². The first and second floors house permanent exhibition halls, while the third floor serves as a temporary exhibition space. Dedicated to



commemorating the renowned Defense of Sihang Warehouse, the memorial features four sections: “Fierce Battle in Shanghai,” “Hold Fast to Sihang,” “Striving in Isolation,” and “Model of Eternal Glory.” In addition to traditional displays such as display panels and artifacts, the memorial employs other methods, including battle scene recreations, sand table models, micro view boxes, paintings and statues, interactive games, and films, providing the audience with a brand-new experience. Highlighting the features of site, battle, and memorial, the memorial serves as a professional venue for public education, exhibition, publicity, academic research, and the collection and preservation of historical artifacts. It is positioned as “a new base for patriotism education, a new platform for cross-Straits exchange, and a new addition to the cultural heritage in the Suhe Bay region.”

Address: No. 21, Guangfu Road

Opening Hours: 9:00-16:30 Tuesday to Sunday (Last admission at 16:00)

North Shaanxi Road is a famous historical and cultural street in China. It stretches for approximately one kilometer from Julu Road in the south to Xinzha Road in the north. The Road was once a high-end residential area where Chinese and foreigners lived together, and a significant hub of Haipai culture. Formerly known as Seymour Road, it is renowned for reflecting half of China’s modern history. The Road was recognized by the Ministry of Culture as a “Famous Historical and Cultural Street in China” in 2013. Some sections of the Road are among Shanghai’s

64 roads that will never be widened. Over 20 historical sites remain, including the former residences of celebrities, iconic architecture, and revolutionary landmarks. The original road dimensions, neighborhood surroundings, and trees lining the Road have largely been preserved. Notably, the North Shaanxi Road Exhibition and Information Center, established in June 2013 at No. 600 North Shaanxi Road, serves as a window on the Road. As a public service organization, the center has mobilized resources from various sectors to promote public access to historical buildings along the Road. Through historical research, cultural exhibitions, and themed events, the center provides public cultural and tourism services, while promoting Shanghai’s revolutionary culture and Haipai culture, as well as the distinctive Jiangnan culture and cultural characteristics unique to Jing’an.

Shanghai Natural History Museum is one of the largest and most influential museums of nature in China. It houses more than 310,000 exhibits, including natural and man-made historical objects from East China, the rest of China, and around the world. The new Shanghai Natural History Museum opened in Jing’an Sculpture Park in 2015. With the theme “Nature, Humans, and Harmony” at its core, the Museum comprises 10 themed exhibition areas, 5 immersive theaters, a 300-square-meter vivarium, and 1,200-square-meter Exploration Labs, displaying over 11,000 specimens and models from seven continents. As a key national science education base and science education base in Shanghai, the Museum welcomes more than 2 million domestic and international visitors annually. It has established partnerships with over 200 schools, developed more than 5,000 high-quality





online and offline science education resources, and reached over 30 million people through various forms of media. The Museum has developed a dynamic model for creating prime educational programs that support well-rounded education, offering themed, experiential activities to spark curiosity, and using exhibition-related educational resources to promote scientific knowledge.

Address: No. 510, West Beijing Road

Opening Hours: 9:00-17:00 Tuesday to Sunday (Last admission at 16:00); closed on Monday (except on public holidays)

Jing'an Sculpture Park: Located in eastern Jing'an District, Jing'an Sculpture Park spans approximately 65,000 m², bordered by North Chengdu Road to the east, West Beijing Road to the south, Shimen Road No. 2 to the west, and Shanhaiguan Road to the north. It is conveniently situated near Metro Lines 2 and 13. The park is an open urban space featuring six scenic areas: the Entrance Square, the Rotating Display Corridor, the Central Square, the Magnolia Blossom Area, the Plum Garden, and the Small-scale Landscape. The Rotating Display Corridor connects the themed landscapes, with sculptures creatively arranged in different parts of the park, creating distinctive spaces. Serving as a space for relaxation and art appreciation, the park has become a model for integrating green spaces with cultural facilities in downtown Shanghai.

Address: No. 128, Shimen Road No. 2

Open 24 hours

Shanghai Circus World: Located at No. 2266 Gonghexin Road in Shanghai, a hub for international cultural exchange, Shanghai Circus World is one of the city's landmarks. It is a comprehensive performance venue for acrobatics, circus

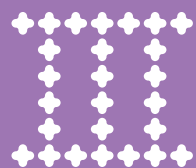
performances, magic shows, and music and dance performances in the Daning Functional Area in Jing'an District. The venue has a seating capacity of more than 1,000 and is equipped with state-of-the-art facilities, including advanced lighting and sound systems as well as specialized equipment for acrobatics. It has hosted numerous international events, including acrobatic, circus, magic and other performances. Since its opening in September 1999, Shanghai Circus World has staged a variety of original acrobatic productions such as *Oriental Night-time Tales*, *Leap into the New Century*, *Happy Circus*, *Taiji Space-time*, *Urban Charms*, and *ERA Journey through Time and Space*. Over the past more than ten years, it has presented more than 8,000 performances, averaging nearly 1,000 per year in recent years, making a significant contribution to Shanghai's vibrant arts and entertainment scene. In particular, the multimedia fantasy show *ERA Journey through Time and Space*, a co-production of Shanghai Circus World, Shanghai Acrobatic Troupe, China Performing Arts Agency and Shanghai Media Group, has been recognized as a famous culture, tourism and performance brand by the Chinese Ministry of Culture and Tourism. Since its premiere, the show has had more than 5,600 performances and attracted more than 5.7 million viewers.

Address: No. 2266, Gonghexin Road

Danling Park: Located at No. 288 West Guangzhong Road, Daning Park is the largest park in western Shanghai, spanning 680,000 m². It is bordered by Gonghexin Road to the east, Hutai Road to the west, Lingshi Road and West Guangzhong Road to the north, and Daning Road to the south. The Pengyuepu River, a tributary of the Huangpu River, flows through the park, dividing it into three sections: eastern, middle, and western. Each section features unique geological conditions and landscapes. The eastern section is a water-themed scenic area, including a 70,000-square-meter artificial lake, a 3,000-square-meter artificial sandy beach, and scenic spots such as Lake Embankment, Lake and Mountain, and Lakeside Wetland. The middle section is home to the distinctive Moor Park, while the western section features a mountain forest area and European-style scenic spots. The park has three gates—East Gate, Mountain Gate (West Gate), and Water Gate—located in the northeast, northwest, and southwest respectively. Open squares in front of the East and West Gates serve as spaces for rest and gatherings.

Address: No. 288, West Guangzhong Road

Opening Hours: May 1 to October 31: 5:00-22:00 (Last admission at 21:30); November 1 to April 30: 6:00-21:00 (Last admission at 20:30)



社会 事业



（一）静安教育	137
（二）科技创新	139
（三）文化服务	139
（四）体育运动	140
（五）医疗卫生	141
（六）特色旅游	141



（一）静安教育

静安区现有公办教育机构 167 个。有中学 48 所（含九年一贯制）、小学 41 所、幼儿园 58 所、其他事业单位 20 个（业余大学 1 所、高职 1 所、中等职业学校 2 所、特殊教育学校 3 所、教育学院 1 个、校外教育单位 2 个、其他 10 个）。现有上海市实验性示范性高中 7 所、上海市特色普通高中 1 所、上海市示范性幼儿园 13 所，义务教育阶段有教育学区 1 个、教育集团 14 个、上海市新优质项目学校 11 所。教职工总数为 1 万 2 千余人、在校学生总数为 10 万余人。成功教育、茶馆式教育、愉快教育、创造教育、低结构活动探索、游戏教育、社区教育等品牌在全国享有较高知名度。荣获 9 项“基础教育国家级教学成果一等奖”和 11 项“基础教育国家级教学成果二等奖”，先后产生了 3 位上海市教育功臣、112 位中小学正高级教师、获得上海市“四有”好教师及提名奖 10 人。曾获得“全国幼儿教育先进区”“全国双基教育先进区”“全国特殊教育先进区”“全国社区教育示范区”“全国活动课程教学实验区”“全国信息技术教育实验区”“基础教育全国级优秀教学成果推广应用示范区”等等荣誉称号。静安教育将形成教育品牌积聚、教育优质均衡、教育生态优良的一流优质教育新格局，建设具有时代特征、静安特色的高水平教育现代化先行区和具有较强影响力的卓越教育强区，建设精品教育，迈向高水平的教育现代化。



（二）科技创新

静安区始终坚持以科技创新为引领，紧紧围绕区委、区政府中心工作，立足上海科创中心建设大局，加快培育新质生产力，聚焦云数智链一体化发展，瞄准硬核科技、未来产业，大力布局区块链、超高清视听产业新赛道，推进市北高新国家区块链应用示范区“数通链谷”建设，发挥市北、大宁“云数智链+文化创意+示范应用”特色优势，打造“视听静界”上海超高清视听产业集聚区；培育高水平创新主体，着力集聚链主企业、硬科技企业，壮大数字产业集群；打造高能级创新平台，获得国家软件和信息服务示范基地、国家大数据产业示范基地、上海市科技服务业发展示范区等一批产业创新基地牌子；引育高层次科技人才，汇聚了以院士专家工作站领衔、外籍高端人才及专业人才为支撑、产业创新创业人才为主体的一批科技人才队伍；构建多层次、全方位的创新生态体系，推进国际化、专业化、数字化创新平台和载体建设，初步建成了以“众创空间-科技企业孵化器-科技主导型园区”为主，比较完整的创新载体生态，为全球化创新创业提供“上海方案、静安模式”。

（三）文化服务

静安区公共文化服务以率先基本建成现代公共文化服务体系为目标，持续深化“美在静安”公共文化圈建设，不断巩固国家公共文化服务体系示范项目、上海市公共文化服务体系示范区的创建成果，优化城区文化设施布局，创新公共文化服务机制，形成现代公共文化服务高质量发展的“静安模式”，基本构建完成“十五分钟公共文化圈”。一方面，着力完善由1个区文化馆（含分馆）、14个街道（镇）社区文化活动中心、267个居委会活动室（其中包含43个灰引力点）构成的“三级公共文化服务网络”；另一方面，不断加大公共文化服务的内容供给，完善政府购买服务机制和公共文化配送机制，于全市首创运用“区块链+”技术，推出“静安文化公益配送”小程序，通过实施“十百千万”文化配送工程，汇聚专业院团、社会机构、文化名人、文化志愿服务、各类公共空间等更加广泛、更显多元、更具品质的各类文化资源，进一步创新各类公共空间与优质文化资源之间融合共享、共通、共建、共有的配送新模式，搭建全覆盖、全贯通的文化配送双向平台，为静安市民提供更多优质的公共文化服务，高质量打造公共文化服务的“最后一公里”服务载体。

静安“智”文化服务平台荣获国家公共文化服务体系优秀示范项目，文化馆入选全国首批、上海唯一“中国儿童青少年戏剧艺术普及推广中心”，上海·静安现代戏剧谷荣获“上海文化十大品牌活动”，“浓情静安·爵士春天”音乐节荣获“上海文化十大特色活动”，浸入



式戏剧《不眠之夜》《时空之旅》入选全国旅游演艺精品名录,“艺术苏河品牌”项目获评 2024 中国群众文化品牌典型案例。

（四）体育运动

静安体育贯彻落实《上海市体育发展条例》精神,以构建“15 分钟社区体育生活圈”为抓手,加快推动全区的群众体育工作、增强区域竞技体育核心竞争力、打造体育特色品牌赛事、优化场馆惠民开放服务能级。目前已形成由市民球场 29 个,市民健身房 7 个,市民健身驿站 10 个,市民健身步道 43 条,社区健身苑点 691 处(健身器材 5650 件),楼宇健身室 52 处,77 所体育场地开放学校以及静安体育中心、静安区运动健身中心、静安区全民健身中心(新建中)、静安区体育馆、静安区网球馆、静安区工人体育场等公共体育场馆组成的公共体育设施体系。“静安体育综合服务平台”、“你点我送”公共体育服务、“共享市民球场”管理模式组成了“互联网+体育”服务平台,根据市民需求配送体育场地、健身指导、运动器材、赛事活动、体质测试等体育服务。2965 名社会体育指导员、281 名公共体育设施扫码巡志志愿者活跃在全区各街镇社区和园区、楼宇。静安区坚持“人人参与运动,人人参加比赛”的办赛理念,着力深化三级体育赛事活动体系建设,开展“创卓越 享静赛”国际静安精英挑战赛、体育周周赛、社区运动会、“静安论剑”“静安论棋”“静安论道”等各级各类线上线下群众体育赛事活动;承办国际剑联花剑大奖赛(上海站)、

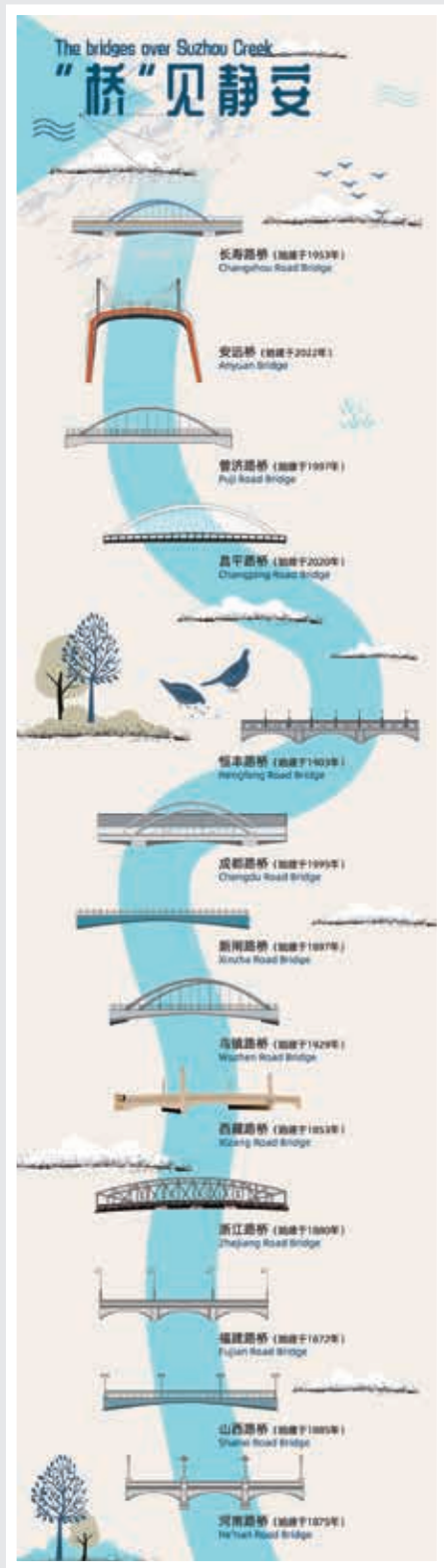
上海赛艇公开赛、上海马拉松、上海静安半程马拉松、第四届市民运动会部分赛事等诸多高规格国际国内大赛,赛事影响力不断扩大。区内布局开展排球、足球、击剑、田径、游泳、体操、羽毛球、武术等 40 余个青少年体育训练项目,现有注册青少年运动员 5299 名。目前在 86 所中小学开设了 27 个项目的体育专项课程教学。

（五）医疗卫生

目前静安区内共有医疗卫生机构 401 家。其中,医院 44 家(三级医院 11 家、二级医院 10 家、其他医院 23 家),社区卫生服务中心 15 家,社区卫生服务站 66 家。依托区域内的华山医院、华东医院、第十人民医院、第一妇婴保健院、市中医医院等著名三级甲等医院,不断推进医疗联合体建设。公立医疗机构获得高质量发展,积极探索区域医疗中心高质量发展模式和路径,逐步建立科学有序的就医格局和系统连续的诊疗格局,增强居民身边的专业诊疗服务。社区卫生服务能级提升,全力推进新一轮社区卫生服务中心标准化建设,推进部分社区卫生服务中心住院床位建设,发展中医药特色服务,推动康复、护理、健康管理三个中心建设覆盖。公共卫生体系不断健全,强化应急、服务、协同、保障等关键能力,加快构建防治结合、医防融合、全社会协同的疾病预防控制体系。健康氛围全面营造,坚持以人民健康为中心的发展思想,增进部门合力,不断优化健康服务、促进健康生活、改善健康环境,提升健康水平,推进《健康上海行动》全面落实。“健康静安”互联网+医疗平台功能逐步完善,推进“便捷就医”数字化转型 3.0 工作,促进签约居民健康数据共建共享,形成社区互联网医院区域性一体化标准,为居民提供便捷化、全流程的数字化就医体验,打造“数享健康”“数智医疗”的健康城区。

（六）特色旅游

静安区旅游业以推动静安成为外国友人入境上海后首选的“第一站”为目标,深入挖掘文旅商体展联动合力,不断打造旅游体验新场景,释放文旅消费新潜力,赋能城区消费增长。静安以其悠久的历史文脉,优美的城市环境,发达的商业商务,迸发的创新活力,以及便捷的信息交通,集聚国内外知名企业和国际化商业活动,吸引来自五洲四海的游客,成为上海对外交流的重要窗口。截至 2024 年 12 月,静安区现有经营性文化娱乐场所 268 家。其中,影剧院 19 家;旅游企事业单位 281 家;星级旅游饭店 17 家(五星级 5 家,四星级 10 家,三星级 2 家);一般旅行社 161 家,出境旅行社 53 家,旅行社分社



50 家；5A 级旅游景区 1 家（中共二大会址纪念馆），3A 级旅游景区 2 家（上海四行仓库抗战纪念馆、大宁公园）。

特色文旅微游路线

静安红色游 中共中央秘书处机关旧址纪念馆—中共中央军委机关旧址纪念馆—中国劳动组合书记部旧址陈列馆—中共淞浦特委机关旧址陈列馆—上海毛泽东旧居陈列馆—中共二大会址纪念馆—1920 年毛泽东旧居 | 静安区旅游服务中心

静安海派游 德莱蒙德住宅（华山 263 老字号品牌馆）—上海蔡元培故居陈列馆—漫步巨鹿路—穿越四明邨—上海展览中心—马勒别墅—陕西北路中国历史文化名街

静安经典游 静安寺—上海百乐门—中共上海地下组织斗争史陈列馆暨刘长胜故居—铜仁路史量才旧居—贝聿勋公馆—绿房子—雷士德医学院旧址—上海美琪大戏院—静安别墅—张园

静安苏河游 福新面粉一厂及堆栈旧址—四行仓库抗战纪念馆—中国银行办事所及堆栈旧址—浙江兴业银行办事所及堆栈旧址—怡和打包厂旧址—浙江路桥—慎余里—天后宫—上海总商会旧址

静安文博游 四安里—裕通面粉厂宿舍旧址—昌平路桥—蝴蝶湾公园—石门二路社区文化活动中心—元利当铺旧址博物馆—上海自然博物馆

静安文化游 上海铁路博物馆—静安区图书馆（天目路馆）—国宝鲁庵印泥传习所—天后宫—中共三大后中央局机关历史纪念馆—UCCA Edge—静安大悦城

静安寺 位于静安区南京西路 1686 号，著名江南古刹，自元明以来为沪上游览胜地，形成了佛教和民俗兼容的文化状态。寺内有大雄宝殿、天王殿、三圣殿三座主要建筑，仿明代以前的建筑风格，雄伟壮观。静安寺旧有“静安八景”之说，即：三国时所立“赤乌碑”、南北朝时所植“陈朝桧”、源于神僧智严异行而流传的“虾子潭”、南宋仲依所建“讲经台”、沸井浜中突沸的“涌泉”、诗僧寿宁所筑方丈室“绿云洞”、行人取道渡吴淞江的古渡口“芦子渡”、东晋遗存防御海寇的“沪渎垒”。寺内还藏有八大山人名画、文征明真迹《琵琶行》行草长卷。

地址：南京西路 1686 号

开放时间：夏令（4 月到 10 月），周一至周日 7:30—18:30（18:00 停止入场），冬令（11 月至次年 3 月）周一至周日 7:30—17:30（17:00 停止入场）

中共二大会址纪念馆 位于老成都北路 7 弄 30 号，建筑面积 2282 平方米，由“序厅”“基本陈列展厅”“党章学习厅”“专题展厅”以及“中共二大会议旧址”“平民女校旧址展厅”等组成。展陈风格庄重大气、巧中见精，向世人诠释了一个兼具地域特色与文化内涵的“石库门里



的纪念馆”，真实再现中国共产党创建初期的峥嵘岁月。近年来先后推出了“菜单式服务”“平民女校体验式参观”“系列巡展”等特色品牌宣教项目，不断拓宽党史宣教领域和辐射面。

地址：静安区老成都北路7弄30号

开放时间：周二至周日 9:00-16:30（16:00 停止入馆）（周一全天闭馆，节假日除外）

上海四行仓库抗战纪念馆位于光复路1号，即原四行仓库（四行信托部沪分部仓库）旧址西部，总建筑面积约3800㎡，其中1、2层为常设展厅，3层为临展厅。纪念馆以中外著名的“四行仓库保卫战”为基本陈列，内容分为“血战淞沪”“坚守四行”“孤军抗争”“不朽丰碑”四个部分。陈列设计上除了版面、实物等常规形式，还辅以战斗场景、沙盘模型、微缩景箱、油画雕塑、互动游戏和影视片等展示手段，给观众以全新体验与感受。纪念馆突出了“遗址、战斗、纪念”三个属性，作为具有社会教育、陈列展示、公众宣传、学术研究和征集保管的专业场馆，体现了“爱国主义教育新基地，海峡两岸交流新平台，苏河湾文脉新延续”的总体定位。

地址：光复路21号

开放时间：周二至周日 9:00-16:30（16:00 停止入场）

陕西北路中国历史文化名街南起巨鹿路，北至新闸路，全长约1公里，曾是华洋混居的高档居民区、海派文化的重要聚集区。“一条西摩路，半部近代史。”2013年，陕西北路中国历史文化名街被文化部评为“中国历史文化名街”，部分路段位列上海“64条永不拓宽的马路”名单。现今仍留存名人旧居、典型建筑、革命遗迹等20余处，马路尺度、街区环境、行道树木等也基本保持着原有的味道。其中，2013年6月成立的陕西北路中国历史文化名街展示咨询中心，位于陕西北路600号，作为展示陕西北路历史文化名街的对外窗口，立足公益性定位，整合社会力量，持续推动陕西北路历史建筑开放，通过陕西北路历史资源挖掘整理、人文展示宣传、主题活动组织等工作开展，为社会公众提供公共文化旅游服务，宣传上海红色文化、海派文化、江南文化中静安区独有的地域特征和人文内涵。

上海自然博物馆是我国最大、最有影响力的自然博物馆之一，收藏藏品31万余件，包括来自华东地区乃至全国及世界各地的自然界



和人类历史遗物。2015 年，上海自然博物馆以崭新的容颜在静安雕塑公园惊艳亮相。新馆以“自然·人·和谐”为主题，包括 10 个主题展区、5 个沉浸式剧场、300 平方米的活体养殖区和 1200 平方米的“探索中心”，展示了来自七大洲的 11000 余件标本模型。上海自然博物馆作为重要的全国科普教育基地、上海市科普基地，年均吸引国内外观众 200 万人次以上，与 200 多所学校建立馆校合作关系，原创研发线上线下高品质科普资源 5000 余项，全媒体受众突破 3000 万人次，形成了“以博物馆精品课程助力素质教育、以体验式主题活动激发探究热情、以衍生化展教资源分享科学新知”的生动局面。

地址：北京西路 510 号

开放时间：周二至周日 9:00-17:00（16:00 停止入馆，周一休馆，国定假日除外）

静安雕塑公园位于上海市中心城区静安区东部，基地东至成都北路，南至北京西路，西至石门二路，北至山海关路，总占地面积约为 6.5 万平方米，拥有便捷的轨道交通 2、13 号线。静安雕塑公园是一个开放式的城市公园，主要由六个景观区域构成：1) 入口广场 2) 流动展示长廊 3) 中心广场景观区 4) 白玉兰花瓣景观区 5) 梅园景观区 6) 小型景观区。整个公园以流动展示长廊为主线，将各个主题景观空间串联起来，相对集中并有组织地将不同创意的雕塑放置在公园各个景观区域里，形成一系列各具特色的空间，为广大市民提供游憩休闲和接受艺术熏陶的场所，成为上海中心城区公园绿地与文化设施结合的典范。

地址：石门二路 128 号

开放时间：全天开放

上海马戏城位于共和新路 2266 号，是上海这座国际文化交流中



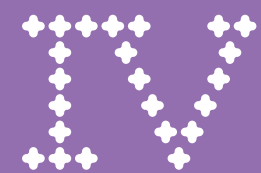
心的标志性建筑之一，地处静安大宁功能区内，是集杂技、马戏、魔术、音乐舞蹈表演为一体的综合性文艺演出场所。场内拥有一千多个座位，设施先进齐全。配备先进的灯光、音响设备和杂技表演的专用设备。曾多次引进和举办国际性杂技、马戏、魔术交流、演出活动。自 1999 年 9 月开业以来，上海马戏城上演了《东方夜谭》《飞跃新世纪》《欢乐马戏》《太极时空》《都市风情》《时空之旅》等多台原创杂技精品晚会，十多年来演出 8000 场，近几年平均每年演出近千场，为繁荣上海文艺舞台做出了积极的贡献。其中，上海马戏城上海杂技团一同与中国对外演出集团、上海文广新闻传媒集团联手打造、运作的多媒体梦幻剧《时空之旅》，首演至今演出场次 5600 多场，观众人次 570 多万，已成为由国家文旅部认定的中国文旅演出市场著名品牌。

地址：共和新路 2266 号

大宁公园位于广中西路 288 号，东起共和新路，西至沪太路，北临灵石路和广中西路，南至大宁路，总面积为 68 万平方米，是沪西最大的公园。黄浦江支流彭越浦河南北贯穿整个公园，把大宁灵石公园分成东、西、中三个园区。三个园区自然地形和景观风貌风格迥异：东块以水为主题，建有湖堤景区、湖光山色景区、湖滨湿地景区，有面积达 7 万平方米的人工湖和 3000 多平方米的人造沙滩；中部为沪上一绝的沼泽园；西部是山林景区和欧式风情景区。公园在东北、西北和南偏西处分别设东门、山门（也称西门）和水门。东、西门前建有大型开敞式入口广场，成为市民休憩和聚会的场所。

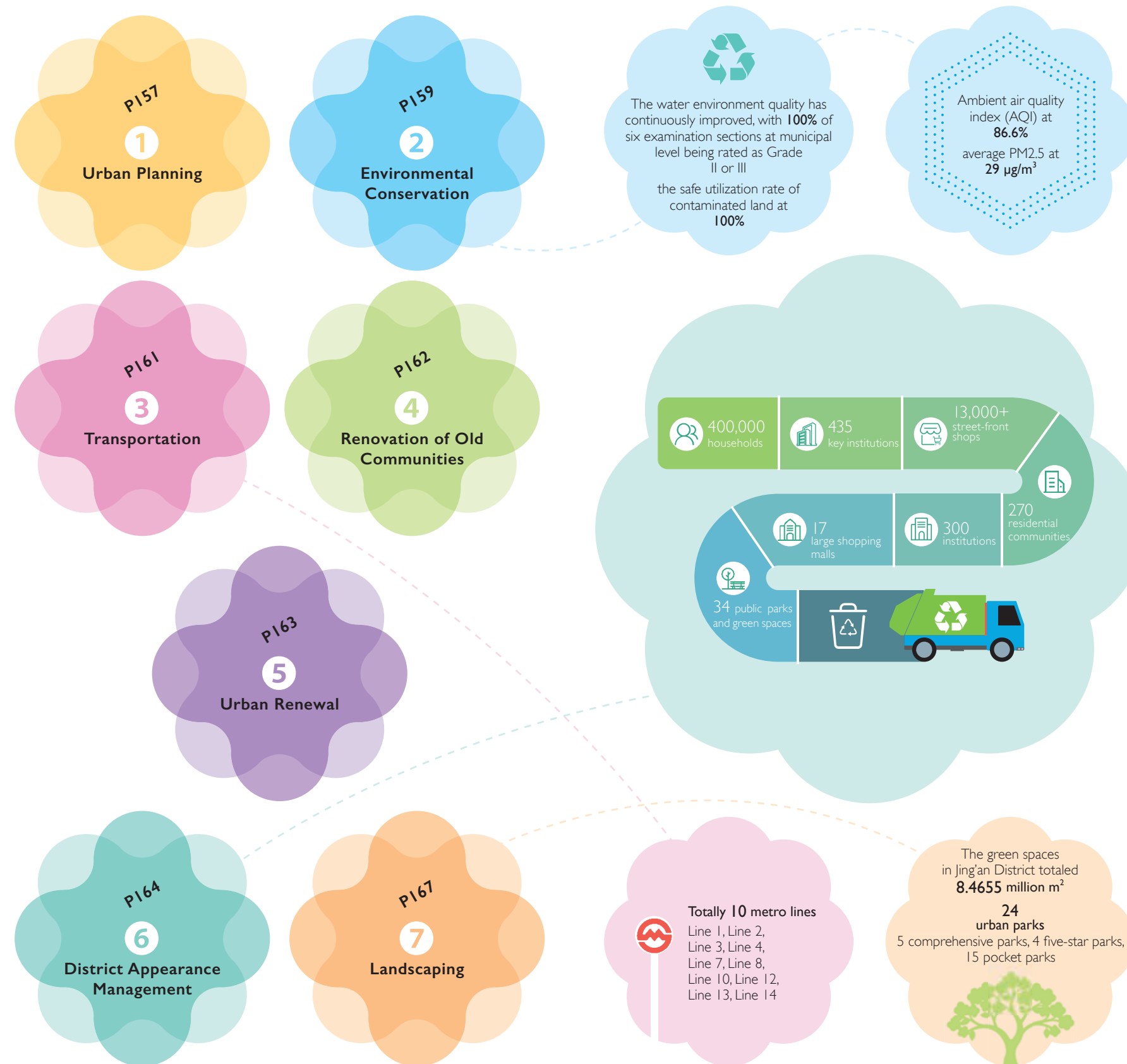
地址：广中西路 288 号

开放时间：5 月 1 日-10 月 31 日 5:00-22:00（21:30 停止入场）
11 月 1 日-次年 4 月 30 日 6:00-21:00（20:30 停止入场）



Urban Development





I. Urban Planning

Jing'an District will focus on Shanghai's goal of developing as "five centers," an excellent global city, and a socialist, modern and international metropolis with global influence. It will fully implement the new development philosophy and leverage its unique strengths to make new progress in the transformation into an excellent, modern cosmopolitan district.

With the vision "International Jing'an, an Excellent District" as its core, the District will enhance its urbanization, cultural appeal, quality of life and environmental quality, and advance the development in terms of global services, innovation and entrepreneurship, modern governance, the central district of an international cultural metropolis and convenient amenities. These efforts will enable Jing'an District to be more attractive, creative and competitive on all fronts and help it develop into a modern cosmopolitan district that excels in services, cultural resources, and governance. The District aims to gain new strategic advantages, including greater global connectivity, a richer cultural atmosphere and a better environment, and to serve as a benchmark for the city in enhancing service functions, innovative industrial development, cultural appeal, smart governance and high quality of life. Through these efforts, Jing'an will emerge as a model district of Shanghai, a socialist, modern and international metropolis with global influence.

The land use in the District is benchmarked against the world's best and the highest national standards, with great



emphasis on productivity, efficiency, energy consumption, and environmental impact as key performance indicators. The district continues to improve the structure of land use, explore additional methods of revitalizing existing industrial land, and significantly enhance the economic capacity and output per unit of land. This approach aims to achieve high-quality land use that is more intensive, efficient, and sustainable. The District will give full play to the “One Axis and Three Belts” for work coordination, exerting the integrative role of the “One Axis” and the distinctive supportive functions of the “Three Belts.” The “One Axis and Three Belts” will have the highest industrial capacity, the most concentrated elements, the most vibrant innovation, and the highest level of management in Jing’an.



2. Environmental Conservation

Under the guiding principles of Xi Jinping’s thought on ecological civilization, Jing’an District has made further efforts in air, water, soil, noise, and solid waste management and continues to consolidate the achievements in pollution control. The district strives to enhance local ecological and environmental quality and accelerate the transition to green, low-carbon development. Steady progress has been made in implementing the District’s 14th Five-Year Plan for ecological and environmental protection, with coordinated efforts in pollution mitigation and carbon emission reduction and effective measures to prevent and address ecological and environmental risks, ensuring environmental safety.

In 2024, the District’s eco-environmental quality remained stable. The proportion of days with good air quality reached 86.6%, and average density of PM_{2.5} was at 29 $\mu\text{g}/\text{m}^3$. The water environment quality has continuously improved, with 100% of six examination sections at municipal level being

rated as Grade II or III. Other environmental conditions have also been improving. Soil pollution is well under control, with the safe utilization rate of contaminated land remaining 100%. Regional environmental noise remains stable, radiation environment quality is good, and the environmental safety risks are stably controllable. Jing'an District is committed to pursuing green and low-carbon development. With a view to making the District more beautiful, focusing on eco-environmental quality improvement, the District has been meticulous in governance to fight pollution and modernize environmental governance, striving to create a beautiful Jing'an with harmony between man and nature.



3. Transportation

Jing'an District boasts a favorable location with convenient and well-connected transportation network comprising railways, elevated roads, metro lines, and bus routes. It has long been honored as "Shanghai's Northern Gateway on Land." It is home to Shanghai Railway Station, an important part of the city's railway hub. Three coach stations, including Shanghai Long-distance Bus Terminal and Hutai Long-distance Bus Terminal and 10 metro lines (Line 1, Line 2, Line 3, Line 4, Line 7, Line 8, Line 10, Line 12, Line 13 and Line 14) are also in the District. In addition, the elevated roads such as Yan'an Elevated Road,





North-South Elevated Road, Inner Ring Elevated Road, and Middle Ring Road, the Jing'an Temple transportation hub and the Middle Ring-Gonghexin Road transportation hub facilitate access to air travel and transfer.

4. Renovation of Old Communities

The scattered renovation of old communities is a key project aimed at addressing areas of weakness and improving public welfare. In recent years, in line with the goals of the 14th Five-Year Plan, Jing'an District has increased the allocation of resources to advance these renovation efforts and improve residents' living conditions. In doing so, it has considered various factors, including the justified demands of residents and the requirements of urban renewal. As of the end of 2024, more than 140,000 square meters of old communities have been renovated, improving the living conditions of thousands of residents.

Jing'an District prioritizes legal compliance and fairness in the scattered renovation of old communities. Each step of the requisition process is carefully designed to ensure that the work is more procedural, rational and targeted from the outset. The District ensures full transparency throughout the process and invites public oversight by making all procedures available to the public through notices, media, and online platforms.

Efforts are made to ensure public participation in the renovation process. Prior to renovation, residents' opinions

are thoroughly sought; during the renovation, residents are encouraged to improve and implement the plans; after completion, public oversight is welcomed and residents' feedback is considered a key indicator in post-project evaluation.

Although the plots involved in scattered renovation are relatively small, they encompass all essential elements. To address challenges encountered during the renovation, the District mobilizes various stakeholders to engage directly with residents, providing strong support for accelerated progress. For complex issues, a collaborative approach involving multiple departments and organizations is adopted, resulting in most plots achieving 100% agreement and relocation.

The once run-down houses have been replaced by high-rise buildings, and multi-generational living under one roof is gradually becoming a thing of the past. The District's landscape has been transformed, creating new opportunities for regional development.

5. Urban Renewal

In terms of urban renewal, Jing'an District has successfully completed the renewal of the Zoumatang area, which was included in the city's first batch of urban renewal projects. This project serves as a model for the revitalization of underutilized land and the redevelopment of existing sites. The District has implemented a collaborative mechanism involving planners, architects, and evaluators to enhance quality and value in urban renewal areas. The 01 Renewal Unit in Shimen Road No. 2 Sub-district is the first project realized under this mechanism.

Jing'an District emphasizes government-industry collaboration for development of urban renewal mechanisms. It has developed a series of working mechanisms for this purpose, including the measures for management of the District's urban renewal project database, ensuring better coordination of resources and projects.

For improvement of living conditions, the District has accelerated the renovation of scattered plots. Its unique Fangualong housing renovation model has become a national benchmark.

In terms of revitalizing commercial buildings, Jing'an District has successfully upgraded JC Mandarin, a century-old building. The project was recognized as an exemplary case of urban renewal by the Ministry of Housing and Urban-Rural

Development. It is the only Shanghai project selected in the category of existing building renovation. The District continues to advance the renewal of commercial buildings, including the construction of the third phase of Hang Lung Plaza, which significantly enhances the business environment and vibrancy of Nanyang Road. The redevelopment of the former Four Seasons Hotel at No. 500 Weihai Road has been completed, transforming it into the first Alila resort located in a CBD.

The District has improved public spaces. The development of the Changping Road Urban Park Block follows green and ecological principles, creating Shanghai's first series of pocket parks. Two of the District's gardens have been recognized as the city's best pocket parks for 2024. In developing the Suhe Bay green space, the District has adopted the sponge city concept, using green roofs, sunken green spaces, rain gardens, and rainwater recycling systems to improve ecological functionality. This project has been recognized as an outstanding sponge city initiative in Shanghai.

In terms of the adaptive reuse of historic buildings, the Zhangyuan Garden in Jing'an District is the first pilot urban renewal project in downtown Shanghai to adopt the integrated approach of conservation, renovation, and demolition. The District has established a quality management system encompassing documentation, preservation, restoration, and use of historic buildings. This project has been recognized by the Chief Quality Officer program as a national model for quality innovation, providing guidance for urban renovation and renewal efforts both citywide and nationwide.

6. District Appearance Management

Jing'an District has made efforts to create a landmark landscape lighting zone. Since its inception in 2023, the Shining Shanghai Festival has attracted significant attention and has gained influence and appeal at home and abroad. In 2025, the third Shining Shanghai Festival will make full use of the festival's impact and economic value to promote the regularization of light displays and achieve the goals of "weekly displays, continuous innovation, and annual events." In alignment with the municipal plans for developing areas along "One River, One Ring, and Two Elevated Roads," the District has completed multiple lighting projects for buildings, including 7 buildings along Yan'an Road, 14 buildings along North-



South Elevated Road, 6 buildings along the Suzhou River, and 5 buildings along Inner Ring Elevated Road. Efforts have also been made to improve landscape lighting in the West Nanjing Road commercial area and surrounding regions. Major projects completed include landscape lighting and creative lighting installations for select historic buildings along West Nanjing Road and upgrades to lighting along Weihai Road. The District has also upgraded the festive lights along West Nanjing Road,





presenting a globally innovative tree-mounted lighting design, highlighting the refined and elegant nighttime scenery of Jing'an District.

Jing'an District has made significant efforts to become a model area for sanitation management. In the first half of 2024, the District ranked first for the third time in the citywide comprehensive evaluation of household waste sorting. In the second half of 2024, as well as in the annual evaluation of household waste sorting, the District received an A+ rating. Waste sorting practice in Jing'an covers 400,000 households, 435 key institutions, and over 13,000 street-front shops. As of December 2024, the District implemented refined sorting of recyclable waste in 270 residential communities, 300 institutions, 17 large shopping malls, and 34 public spaces, including parks and green spaces. Notably, 50 Party and government offices and 165 schools of various levels achieved full coverage of refined sorting of recyclable waste, leading the city in this initiative. The District has 125 public restrooms, of which 68 have been renovated to be elderly- and children-friendly, and all of them are open around the clock. Four public restrooms in Jing'an ranked among Shanghai's Most Beautiful Toilets for 2024, representing the largest number of selections.

Jing'an District is committed to establishing itself as a model area for district appearance. Through monthly City Cleanup Day and self-regulation organizations, the District has strengthened coordination in district appearance management, addressed weak areas, and carried out targeted improvements around metro stations. It has pioneered the "comprehensive



doorstep responsibility" management model, given full play to the role of the "District Appearance+" approach to broaden the scope of "doorstep responsibility" management and enhance grassroots governance capabilities. In the first half of 2024, Jing'an ranked first in Shanghai's public satisfaction survey on urban appearance and environmental quality for the third time. Following the principles of "comprehensive elements, simplification, and integration," the District has launched a new round of initiatives for improving district appearance. In 2024, Changping Road Urban Park Block, Huashan Road Historical and Cultural Block, and Lingnan Road Ecological Leisure Block were recognized as municipal-level beautiful blocks. For the Changping Road project, 118 public suggestions were collected and incorporated, demonstrating the practice of whole-process people's democracy. The block's design adopts an age-friendly approach and introduces Shanghai's first series of pocket parks, guided by the vision of building a park city. In addition to these municipal-level projects, Jing'an has completed upgrades to landscape nodes along Weihai Road and Julu Road, showing the greater charm of these areas with a refreshed look and further supporting the District's economic development.

7. Landscaping

Jing'an District is accelerating the development of a leading zone in landscaping. In line with the requirements of greening, colorization, rarity and economic benefit, the District has completed the Jing'an District Park City Plan, the first district

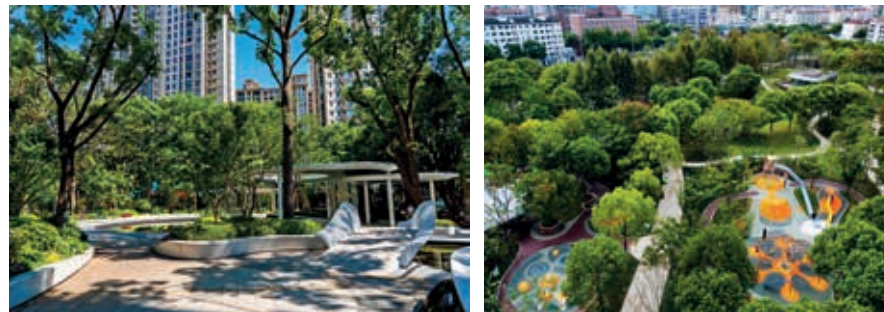
in the city to do so. The District has actively advanced the development of a system of parks comprising comprehensive parks, specialized parks, community parks, and pocket parks. Notable achievements include the creation of urban parks such as Fudeli Park and Jing'an Sculpture Park, as well as pocket parks like Shiyin Garden, Tongfu Garden and Jinxiu Garden, enhancing the green space layout at different levels and improving the eco-environment. These efforts aim to create more superior eco-environment, better environmental quality and more detail-oriented public services in Jing'an. The District has organized signature events such as the Shanghai Jing'an International Sculpture Project to promote park-based cultural activities.

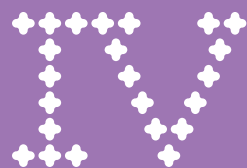
Jing'an District continues to advance vertical greening initiatives, including rooftop gardens, window and balcony greenery, flower walls, and floral streets, to enhance the district appearance and increase visible green. Emphasizing the role of science and technology in greening, the District has developed a recycling system for garden plant waste, improved soil in



green spaces, advanced ecological management of water bodies in parks, and introduced new and prime plant varieties. By optimizing land resources and expanding ecological green spaces, the District leverages new concepts and technologies to create high-quality green spaces.

As of December 2024, the green spaces in Jing'an District totaled 8.4655 million m^2 . This includes 3.4214 million m^2 of parks, 5.0441 million m^2 affiliated to residential and institutional areas, 24 urban parks, covering 1.3978 million m^2 , comprising 5 comprehensive parks, 4 five-star parks and 15 pocket parks, 468,600 m^2 of vertical greenery, and 28.87 kilometers of greenways. The per capita public green space was 3.64 m^2 , and the greening coverage rate was 25.31%.





城市 建设



（一）城区规划	173
（二）环境保护	174
（三）交通环境	175
（四）旧区改造	175
（五）城市更新	176
（六）市容管理	177
（七）园林绿化	179



（一）城区规划

静安将围绕上海建设“五个中心”、迈向卓越的全球城市和具有世界影响力的社会主义现代化国际大都市的目标，全面贯彻新发展理念，发挥静安区优势特点，谱写卓越的现代化国际城区新篇章。

城区功能将围绕“国际静安、卓越城区”的发展愿景，着力提升城区能级、凸显人文魅力、优化城区品质、完善空间环境，推进建设全球服务承载区、创新创业活力区、国际文化大都市核心区、美好生活实践区，实现“国际静安”的吸引力、创造力、竞争力全面增强，努力建设“卓越服务、卓越人文、卓越治理”的现代化国际城区。形成“国际链接更加通达、人文气息更为浓厚、城区环境更具品质”的战略新优势，在“服务功能提升、产业创新发展、人文魅力彰显、城区智慧治理、品质生活创造”等方面成为全市标志性地区，成为具有世界影响力的社会主义现代化国际大都市典范城区。

城区土地利用对标国际一流、国内最高土地利用绩效，坚持“亩产论英雄、效益论英雄、能耗论英雄、环境论英雄”，持续优化土地利用结构，拓宽存量工业用地盘活路径，大力提升单位土地经济承载容量和产出水平，实现更集约、更高效、更可持续的土地高质量利用。依托“一轴三带”统筹推进工作实施，充分发挥“一轴”贯通联动作用和“三带”特色支撑功能，实现将“一轴三带”区域建设成静安产业能级最高、要素最为集聚、创新最为活跃、管理水平最高的区域。



（二）环境保护

静安区深入学习贯彻习近平生态文明思想，深入推进大气、水、土壤、噪声、固体废物等环境治理，持续深化污染防治攻坚成果，努力改善区域生态环境质量，加快推动绿色低碳转型。稳步推进区生态环保“十四五”规划，减污降碳协同发展，生态环境风险有效防范化解，环境安全得到切实保障。

2024年，区域生态环境质量保持基本稳定。环境空气质量指数（AQI）优良率为86.6%；PM2.5平均浓度为29微克/立方米。水环境质量持续改善，6个市考断面Ⅱ~Ⅲ类比例为100%。其他环境状况稳定向好，土壤污染状况不断改善，污染地块安全利用率保持100%，区域环境噪声保持稳定，辐射环境质量良好，环境安全风险平稳可控。静安区认真践行绿色低碳发展理念，以美丽静安建设为统领，以改善生态环境质量为核心，以精细化治理为抓手，深入打好污染防治攻坚战，提高现代环境治理水平，努力打造人与自然和谐共生的美丽静安。

（三）交通环境

静安区地理位置优越，交通便捷，四通八达，形成铁路、高架、地铁、公交等交通网络，素有上海“陆上北大门”之称。拥有铁路上海火车站，为上海铁路枢纽的重要组成部分。除铁路枢纽外，静安区内还有上海长途汽车客运总站、沪太长途客运站等三个长途客运站。轨道交通1号线、2号线、3号线、4号线、7号线、8号线、10号线、12号线、13号线、14号线共10条地铁线路穿越本区。延安路高架、南北高架、内环线、中环线等高架道路贯通，静安寺交通枢纽、中环共和新路综合客运交通枢纽等，为航空旅行、出行中转提供了很大的便利。

（四）旧区改造

零星旧改工作是“补短板、惠民生”的重大民心、民生工程。近年来，围绕“十四五”目标，静安区持续加大资源投入，结合居民合理诉求、城市更新要求等各方面因素，深入推进零星改造，改善居民



群众的居住条件。截至目前,全区超过 14 万平方米旧里面积完成改造,数以千计居民解决了居住困难、改善了生活条件。

坚持把依法依规、公平公正作为推进零改工作的第一要素。科学设计征收过程中的每个环节,从源头上提高规范化、科学化、精细化水平。抓牢全程公开这一核心,将所有操作环节通过告示、媒体、网络等途径向群众公开公示,接受社会监督。

强化群众参与工作机制。实施改造前,充分征询居民意愿,坚持“问需于民”;实施过程中,引导居民参与方案优化和实施,坚持“问计于民”;实施改造后,接受群众监督,将居民评价作为项目后评估的重要指标,坚持“问效于民”。

零改地块“麻雀虽小,五脏俱全”,面对推进旧改中遇到的难题,带动各方力量投入一线,团结凝聚群众,为加快推进零改工作提供坚强保障。遇到复杂问题,多部门、多单位联合攻克一块又一块基地,大多数地块实现签约、搬迁百分百。

如今,以前的“棚户简屋”被“高楼大厦”所替代,“几代同堂”渐渐成为历史,城区面貌实现新的提升,区域发展换来新的空间。

(五) 城市更新

静安区聚焦卓越城区城市更新行动,成功推动走马塘片区更新并

入选全市首批城市更新项目库,对于盘活低效用地以及存量用地再开发模式具有示范作用。深化“三师”联创工作机制(责任规划师、责任建筑师、责任评估师)带动城市更新区域的品质提升、品牌塑造、价值彰显。顺利推动静安区石门二路-01 更新单元成为最先落地的“三师联创”项目。

聚焦城市更新体制机制研究,注重加强与产业部门的联动,探索形成区城市更新项目库管理办法等系列工作机制,加强城市更新资源统筹和项目统筹。

聚焦人居环境改善优化,加快推进零星地块改造。探索构建体现蕃瓜弄特色的旧住房改建八法,成为全国示范典型。

聚焦商务楼宇活力再造,锦沧文华百年建筑更新升级,入选住建部城市更新优秀案例,为既有建筑改造类唯一一个上海项目。持续推动一批商务楼宇更新落地见效,开工建设恒隆广场三期项目,有效提升商圈后街南阳路的业态和环境。威海路 500 号(原四季酒店改建项目)已开业,升级为首个位于 CBD 的度假型阿丽拉酒店。

聚焦公共空间品质提升,“昌平路城市公园街区”坚持绿色生态,打造上海首条“口袋公园带”。静安拾影花园、锦绣花园入选全市 2024 年最佳口袋公园案例。苏河湾绿地,充分应用“+ 海绵”理念,合理采用绿色屋顶、下沉式绿地、雨水花园、雨水调蓄回用的措施,实现城市的自由呼吸,入围上海市海绵城市精品工程。

聚焦历史建筑活化利用,张园作为上海中心城区首个采用“留改拆”城市更新试点项目,围绕张园历史建筑守护焕新建立的“建档—保护—修缮—利用”质量管理模式,入选全国首席质量官质量变革创新典型案例,为全市乃至全国的旧城改造、城市更新提供指导。

(六) 市容管理

静安区倾情打造“景观灯光标志区”,“闪亮·上海”静安国际光影展自 2023 年诞生以来,在国内外形成了较强传播力、影响力和吸引力。2025 年,第三届“闪亮·上海”静安国际光影展将充分利用节展影响力和品牌经济价值,推动光影常态化,做到“周周演、节节新、年年办”。按照推进“一河一环两高架”沿线建设要求,完成延安路沿线(7 处)、南北高架沿线(14 处)、苏州河沿岸(6 处)及内环高架沿线(5 处)楼宇灯光建设。同步推进南京西路商圈及周边区域景观照明提升,完成南京西路部分优秀历史建筑景观灯光、创意灯光小品建设以及威海路景观灯光改造,对南京西路沿线节日彩灯全线升级,实现了全球首创树上彩灯的全新演绎,展现高端经典雅致的静安夜景。

静安区全力争创“环卫管理示范区”,2024 年上半年度生活垃圾分类实效综合考评继续蝉联全市第一,获得三连冠,在 2024 年下半



年和全年“上海市生活垃圾分类情况评估”中均获“A+”等次。静安区垃圾分类覆盖40万户居民、435家重点单位、13000余家沿街商铺。截至2024年12月，在全区270个居住小区、300个单位、17个大型商场和34个公园绿地等公共场所推行可回收物精细化分类模式，其中全区50个党政机关，165个大、中、小学校在全市率先实现可回收物精细化分类全覆盖。全区现有公厕125座，全部实现24小时全开放。目前已有68座完成适老化适幼化改造，望樟驿、拾影、武宁南路54号(灵触)、市北驿等4座公厕入选2024上海“最美厕所”，获选数量全市第一。

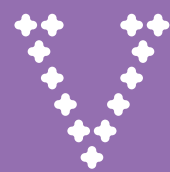
静安区努力建成“市容环境样板区”，以每月“城市清洁日行动”、自律组织培育等为载体，加强市容管理工作联动，推进薄弱区域整治工作、开展轨道站点周边专项治理。探索“全域门责”管理模式，充分发挥“市容+”作用，拓展门责管理范畴，提升基层管理水平。在2024年上半年度上海市市容环境质量社会公众满意度测评中，静安区第三次获得全市第一名。坚持“全要素、做减法、一体化”的工作要求，明确新一轮“美丽街区”创建计划，2024年创建“昌平路城市公园街区”“华山路历史文化街区”“岭南路生态休闲街区”三个市级美丽街区。其中昌平路“美丽街区”广泛征求并采纳各方意见118条，践行全过程人民民主，将“全龄友好”理念注入街区建设，并按照“公园城市”发展思路，打造上海首条“口袋公园带”。除3个市级美丽街区外，还完成了威海路、巨鹿路等景观节点提升改造工作，以崭新的面貌彰显街区更深层次的魅力，进一步助力服务静安经济发展。

(七) 园林绿化

静安区加快建设“绿化生态引领区”，按照生态环境“绿化、彩化、珍贵化、效益化”要求，全市率先编制完成《静安区公园城市规划》，大力发展城区公园体系建设，打造综合公园、专类公园、社区公园和口袋公园组成的公园体系，建成一批以辅德里公园、静安雕塑公园为代表的城市公园，以拾影花园、同福花园、锦绣花园为代表的口袋公园，完善各层次绿地布局，改善生态环境，努力营造生态环境更优越、环境品质更美丽、公共服务更细致的静安美丽城区。打造中国·上海静安国际雕塑展等活动品牌，推进公园文化活动。

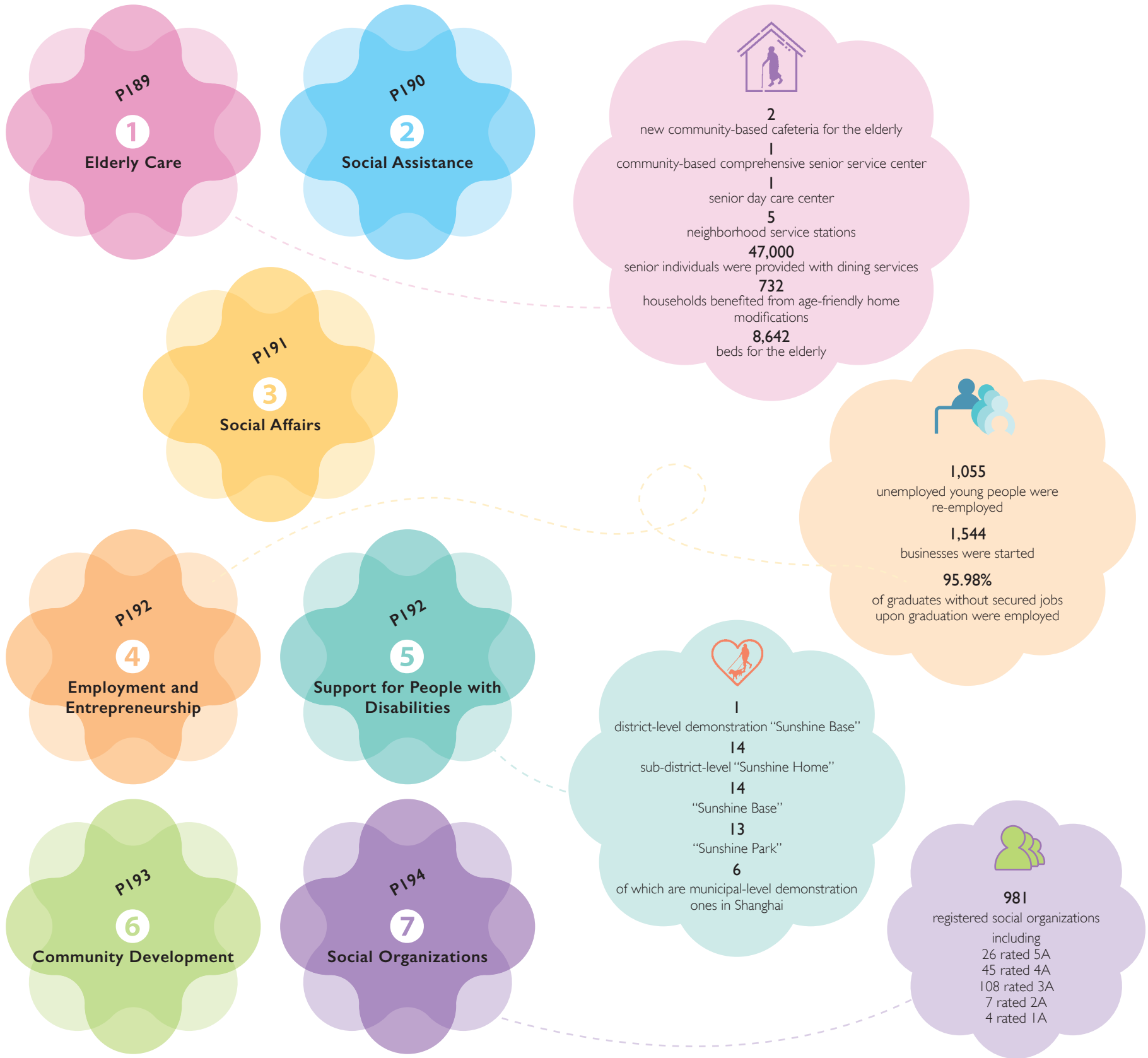
持续推进屋顶绿化、窗阳台绿化、花墙、花街等立体绿化，优化城区景观，提升绿视率。坚持科技兴绿，建立园林植物废弃物循环利用体系，实施绿地土壤改良，推进公园水体生态治理，推广植物新品种应用，挖掘土地资源，拓展生态绿色空间，充分利用新理念、新技术的应用，打造精品绿地。

截至2024年12月，静安区绿化总面积846.55万平方米，其中：公园绿地342.14万平方米、单位居住区附属绿地504.41万平方米；全区城市公园共24座，面积139.78万平方米，其中综合性公园5座，五星级公园4座，口袋公园共15座；立体绿化46.86万平方米、绿道28.87公里，人均公共绿地面积3.64平方米，绿化覆盖率25.31%。



Public Well-being





I. Elderly Care

Jing'an District has been steadily advancing the development of its social elderly care service system and improving basic public services for the elderly people. Efforts have been made to improve the home-based elderly care system and establish 15-minute senior life circles. In 2024, the District set up two new community-based cafeteria for the elderly, one community-based comprehensive senior service center, one senior day care center, and five neighborhood service stations. 47,000 senior individuals were provided with dining services, and 732 households benefited from age-friendly home modifications. The District has also made progress in relevant elderly care projects, with 8,642 beds for the elderly, 71% of which are nursing beds. Further efforts have been made to promote the Five-Bed Integration model for integration of medical and elderly care services.





2. Social Assistance

Jing'an District follows the *Opinions on Reforming and Improving the Social Assistance System*, *Opinions on Strengthening Dynamic Monitoring of Low-Income Populations and Enhancing Multi-Tiered and Categorized Social Assistance*, and the *Shanghai Social Assistance Regulation* in delivery of social assistance. Aiming at “comprehensive, multi-tiered and categorized, integrated, and efficient” assistance, the District has established a multi-tiered and categorized social assistance system, which centers on subsistence assistance, specialized social assistance, and emergency social assistance, supplemented by assistance from the private sector. This system ensures the basic needs of residents are met, mitigates risks, and promotes development. The District has effectively met people's basic living needs and advanced high-quality social assistance.

3. Social Affairs

Jing'an District actively fulfills its responsibilities in ensuring people's basic livelihood, grassroots social governance, and essential social services, continuously advancing the high-quality development of social affairs. The District adheres to law-based administration in marriage registration, offering convenient, efficient, accurate, and considerate services. Measures have been taken to reform marriage customs, promote marriage culture, and facilitate the sound development of the matchmaking industry. Prioritizing the interests of children, Jing'an has enhanced its efforts to ensure the basic living needs and care services for orphans, children in difficulty, children with autism, and migrant children. It remains committed to supporting people with disabilities by improving social welfare systems and care services. It ensures effective management of funeral and burial affairs. The District has implemented initiatives to expand access to government services, providing services at community affairs service centers and residential communities and on-site services for disadvantaged groups, ensuring the last-100-meter delivery of government services. By December 2024, all 14 sub-districts and towns had achieved 100% coverage of comprehensive service windows at community affairs service centers, and service points were available at 261 residents committees across the District, enabling residents to handle 189 administrative tasks and consult on 198 matters locally. Mobile services via remote virtual service counters enable on-site assistance for disadvantaged groups.





4. Employment and Entrepreneurship

In 2024, Jing'an District upheld the employment-first strategy, implementing employment support policies and enhancing the efficiency of public services for employment and entrepreneurship. The District has been prioritizing key groups, such as college graduates, in its efforts to stabilize and ensure employment. With the District's efforts, a total of 1,055 unemployed young people were re-employed, 1,544 businesses were started, and 95.98% of graduates without secured jobs upon graduation were employed. Registered unemployment rate was below the target set by the municipal government.

5. Support for People with Disabilities

In Jing'an District, there is one district-level demonstration "Sunshine Base," 14 sub-district-level "Sunshine Home," 14 "Sunshine Base," and 13 "Sunshine Park," six of which are municipal-level demonstration ones in Shanghai. In addition, 14 assistive device service organizations for the disabled, four of which are the demonstration ones in Shanghai. Basically, every registered disabled resident in Jing'an District with local registered residence has access to rehabilitation services, and all disabled people with the ability and willingness to work have been employed. The District has implemented disability life assistance and allowance policies and other policies to ensure the basic needs of the disabled are met.



Jing'an District has won numerous honors for its support for people with disabilities, such as National Disabled-related Work Advanced District, National Disabled Community Rehabilitation Demonstration District, National Community Disabled-related Work Demonstration District, National Mass Sports Advanced Unit, one in National Advanced Disabled Coordination Associations and Advanced in National Association of the Deaf Work, Model Service Center for the Handicapped, Model in Constructing Non-Barrier Facilities.

6. Community Development

Following the principle of "clearly defined duties, unified powers and responsibilities, coordination, and law-based and efficient operation," Jing'an District defines the crossed functions, and adjusts institutions within the sub-districts. Five types of centers are established in each of the 14 sub-districts and towns. Community affair service centers provide residents with one-stop services. Community health service centers, responsible for medical services and public health functions including prevention, rehabilitation and health management, collaborate with Grade-II and Grade-III hospitals in the District on



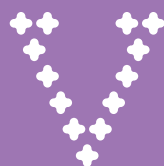
professional matters. Community party-mass service centers provide service for Party organizations at the community level, Party members and other people. City operation & general management centers are responsible for inspecting the District to identify urban management problems and coordinating relevant law enforcement teams. Economic development service centers are responsible for ensuring business stability.

7. Social Organizations

Attaching great importance to the development of social organizations, the CPC Jing'an District Committee and Jing'an District People's Government have implemented the policies of the CPC Central Committee, State Council, CPC Shanghai Municipal Committee, and Shanghai Municipal People's Government on strengthening management and promoting healthy development of social organizations. The District has established a joint conference mechanism for social organization development and management to ensure high-quality development through proactive guidance and strict legal oversight. Pioneering the 1+14+X hub-style service and

management model, Jing'an has achieved full coverage of "social organization federations + social organization service centers" in communities. The District has also introduced mechanisms for government procurement of services from social organizations and a special financial incentive system to support their growth. By strengthening Party building in social organizations and promoting standardized management, Jing'an drives high-quality development of social organizations, ensuring they effectively serve the nation, society, residents, and industries. Through initiatives such as government procurement of their services, project-based operations, and community governance, the District continues to boost the development of social organizations, establishing a unique path to their high-quality development with Jing'an characteristics.

As of the end of December 2024, Jing'an District had 981 registered social organizations, including 26 rated 5A, 45 rated 4A, 108 rated 3A, 7 rated 2A, and 4 rated 1A. These organizations mainly operate in fields such as social services, education, sports, culture, industrial and business services, scientific research, and healthcare. They have been an important force in social management and development.



民生保障



（一）养老服务	199
（二）社会救助	199
（三）社会事务	200
（四）就业创业	200
（五）残疾人工作	201
（六）社区建设	201
（七）社会组织	202



（一）养老服务

静安区稳步推进社会养老服务体系建设和持续提升养老基本公共服务水平。不断完善居家养老服务体系，积极打造 15 分钟“乐龄生活圈”。2024 年新建 2 家社区长者食堂、1 个社区综合为老服务中心、1 个老年人日间照护中心和 5 个家门口服务站；为 4.7 万名老年人提供助餐服务，为 732 户老年人开展居家环境适老化改造。积极推进相关养老项目建设，全区已建成养老床位 8642 张，其中护理型床位占比达到 71%，在全区持续深化“五床联动”医养融合工作。

（二）社会救助

静安区社会救助工作以深化落实《关于改革完善社会救助制度的实施意见》《关于加强低收入人口动态监测做好分层分类社会救助工作的意见》和《上海市社会救助条例》为主线，紧扣“覆盖全面、分层分类、综合高效”目标要求，健全以基本生活救助、专项社会救助、急难社会救助为主体，社会力量参与为补充的分层分类社会救助体系，发挥社会救助“保基本、防风险、促发展”功能作用，切实兜住兜准兜好基本民生底线，持续推动社会救助高质量发展。



（三）社会事务

静安区积极履行基本民生保障、基层社会治理、基本社会服务等职责，持续推动社会事务工作高质量发展。坚持婚姻登记依法行政，提供便捷、高效、准确、温馨的婚姻登记服务。推进婚俗改革和婚姻文化建设。促进婚介行业健康发展。坚持儿童利益最大化，全面提升孤儿、困境儿童、孤独症儿童、流动儿童等特殊儿童基本生活和关爱服务的保障水平；坚持对残疾人关心关注，着力完善残疾人社会福利制度和关爱服务体系；落实殡葬事务和管理工作；以社区事务受理服务中心“综合办”，居民区等场所“就近办”，困难群体“上门办”，三位一体打造“静邻帮办”系列服务，全方位拓宽服务渠道，打通政务服务“最后一百米”。截至2024年12月底，全区14个街镇社区事务受理服务中心综合窗口覆盖率达100%，“就近办”服务点覆盖14个街镇261个居委会等场所，居民就近即可实现189个事项办理，198个事项咨询，移动“远程虚拟窗口”设备可为困难群体上门提供服务。

（四）就业创业

2024年静安区坚持就业优先战略，落实落细各项就业支持政策，致力提升就业创业公共服务效能，始终将高校毕业生等重点群体放在突出位置，全力以赴稳就业保就业。帮助长期失业青年就业



创业1055人，创业帮扶1544户，离校未就业毕业生帮扶就业率95.98%，登记失业人数控制在市政府下达目标内。

（五）残疾人工作

静安区建有区级示范型“阳光之家”1家，街镇层面建有“阳光之家”14家、“阳光基地”14家；建有阳光心园13家，其中6家为上海市示范型。建有残疾人辅助器具服务社14家，其中4家为上海市示范型。静安区基本实现本区户籍持证残疾人“人人享有康复服务”，有就业能力且具有就业愿望的残疾人得到充分就业，残疾人生活救助、福利补贴和托底保障政策得到全面落实。

静安区先后荣获了“全国残疾人工作先进区”“全国残疾人社区康复示范区”“全国社区残疾人工作示范区”“全国群众体育先进单位”“全国残疾人专门协会先进单位”“全国聋人协会工作先进单位”“残疾人之家”“全国无障碍建设市县”称号。

（六）社区建设

静安区按照“职责清晰、权责统一、运转协调、依法高效”的原则，梳理条块交叉职能，调整街道内设机构，在全区十四个街道、镇设置“五中心”：“社区事务受理服务中心”基本形成“一口受理、一头管理、



一门服务”的运作模式；“社区卫生服务中心”具有医疗和公共卫生（预防、康复和健康）两大功能，在专业上与区内二级、三级医院紧密相连；“社区党群服务中心”集中服务社区党组织和党员群众；“城市运行管理中心”巡查发现辖区内各类城市综合管理问题，指挥协调相关执法管理队伍开展联合执法处置；“经济发展服务中心”承担辖区内安商稳商职责。

（七）社会组织

静安区委、区政府高度重视社会组织建设，积极贯彻落实党中央、国务院和上海市委、市政府关于加强社会组织管理促进社会组织健康发展的部署，建立健全社会组织建设与管理联席会议制度，一手抓积极引导发展，一手抓严格依法管理，持续推动社会组织高质量发展。在全市率先创建“1+14+X”枢纽型社会组织服务管理模式，实现社区“社会组织联合会+社会组织服务中心”全覆盖。建立健全政府购买社会组织服务工作机制和社会组织发展专项资金激励制度，不断强化社会组织党建引领，以规范化管理促进社会组织高质量发展为指引，充分发挥社会组织服务国家、服务社会、服务群众、服务行业的作用，持续深化和推动政府购买服务、项目化运作和社区治理，不断激发全区社会组织发展活力，走出一条具有静安特色的社会组织高质量发展之路。

截至2024年12月底，全区经核准登记的社会组织共981家，有190家社会组织获得评估等级（5A级26家、4A级45家、3A级108家、2A级7家、1A级4家），主要分布在社会服务、教育、体育、文化、工商服务业、科学研究、卫生等领域，成为参与社会治理、促进社会发展的一支不可或缺的重要力量。

图书在版编目（CIP）数据

静安概览．2025：汉英对照 / 上海市静安区人民政府新闻办公室编．—上海：上海文化出版社，2025．4．
ISBN 978-7-5535-3197-7

I．K925.13

中国国家版本馆 CIP 数据核字第 20258X8U06 号

出 版 人：姜逸青
统 筹：罗 英
责任编辑：张 彦
整体设计：袁银昌
设计排版：袁银昌平面设计工作室 李 静 胡 斌

书 名：静安概览 2025（汉英对照）
作 者：上海市静安区人民政府新闻办公室
出 版：上海世纪出版集团 上海文化出版社
地 址：上海市闵行区号景路 159 弄 A 座 3 楼 201101
发 行：上海文艺出版社发行中心
上海市闵行区号景路 159 弄 A 座 2 楼 201101 www.ewen.co
印 刷：上海雅昌艺术印刷有限公司
开 本：787×1092 1/16
印 张：9.5 插页 5
印 次：2025 年 6 月第一版 2025 年 6 月第一次印刷
书 号：ISBN 978-7-5535-3197-7/K.350
定 价：98.00 元

告 读 者：如发现本书有质量问题请与印刷厂质量科联系（T：021-68798999）